



FREMANTLE INDONESIA

RACE & RALLY 2025

Tonight's Presenters

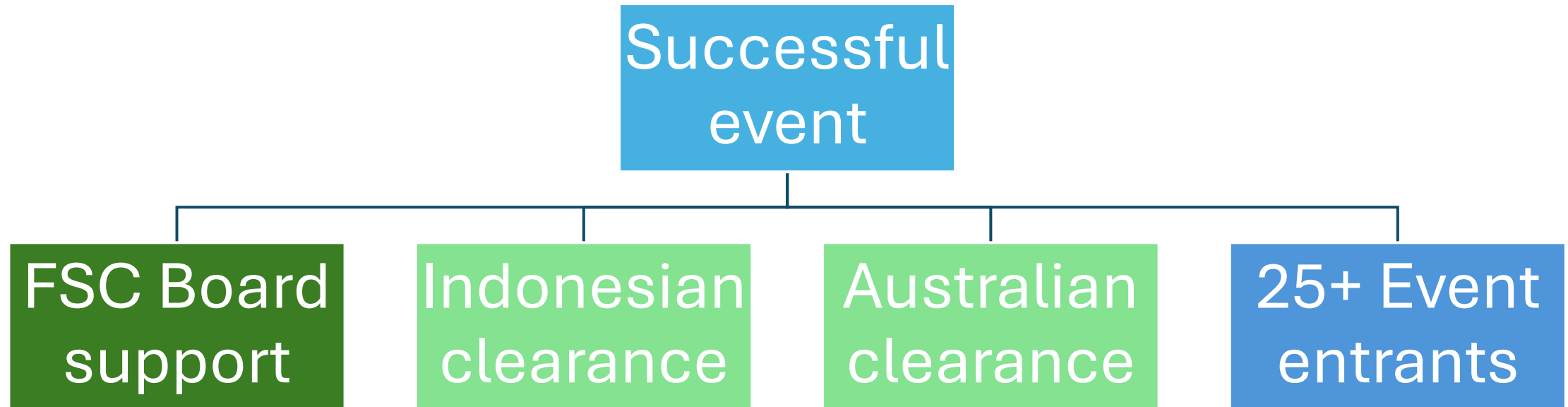
- Steve Parkinson – Rear Commodore Sailing
 - Bill Henson – Deputy Race & Rally Director
 - Ian Whitehead
 - Gordon Baird
 - Steve Parkinson
-
- Craig Evans - CEO

Fremantle Indonesia Race & Rally History

- Bali 9 times
- Lombok 2 times
- Total Indonesia Race & Rally 11 times

- Bali 2020 COVID: CANCELLED
- Exmouth 2021, 2023
- Indonesia 2025 will be 12th time!

Building blocks for a successful event are in place



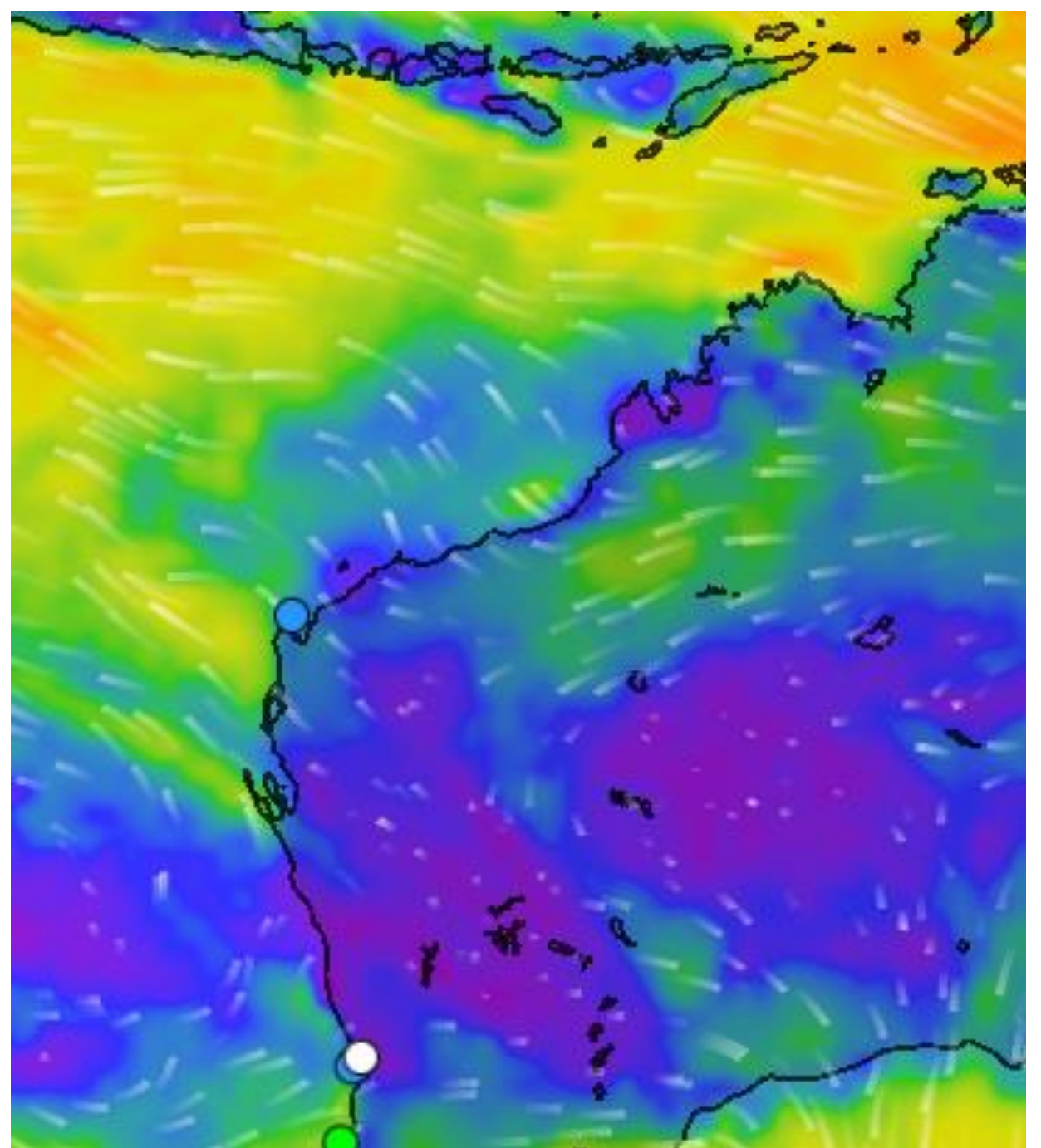
Likely weather patterns

South of NW Cape

- Wind speed & direction dependant on the location & passage of cold fronts

NW Cape to Indo

- SE trades winds predominate
- Typically 10 - 15 knots, 090 – 120' direction
- Sailing wind angle 70 to 100'



Fremantle to Indonesia Comparison

- Sydney – Hobart 628 nm
- Sydney – Noumea 1064 nm
- Sydney – Auckland 1270 nm
- Melbourne - Osaka 5500 nm, but only double handed

- Fremantle - Komodo 1510 nm
- Australia's longest race and rally!

Fremantle to Indonesia Race Records

1981

- Siska, Rolly Tasker
- 6 days 15 hours 39 minutes
- 9.02 knots average

2011

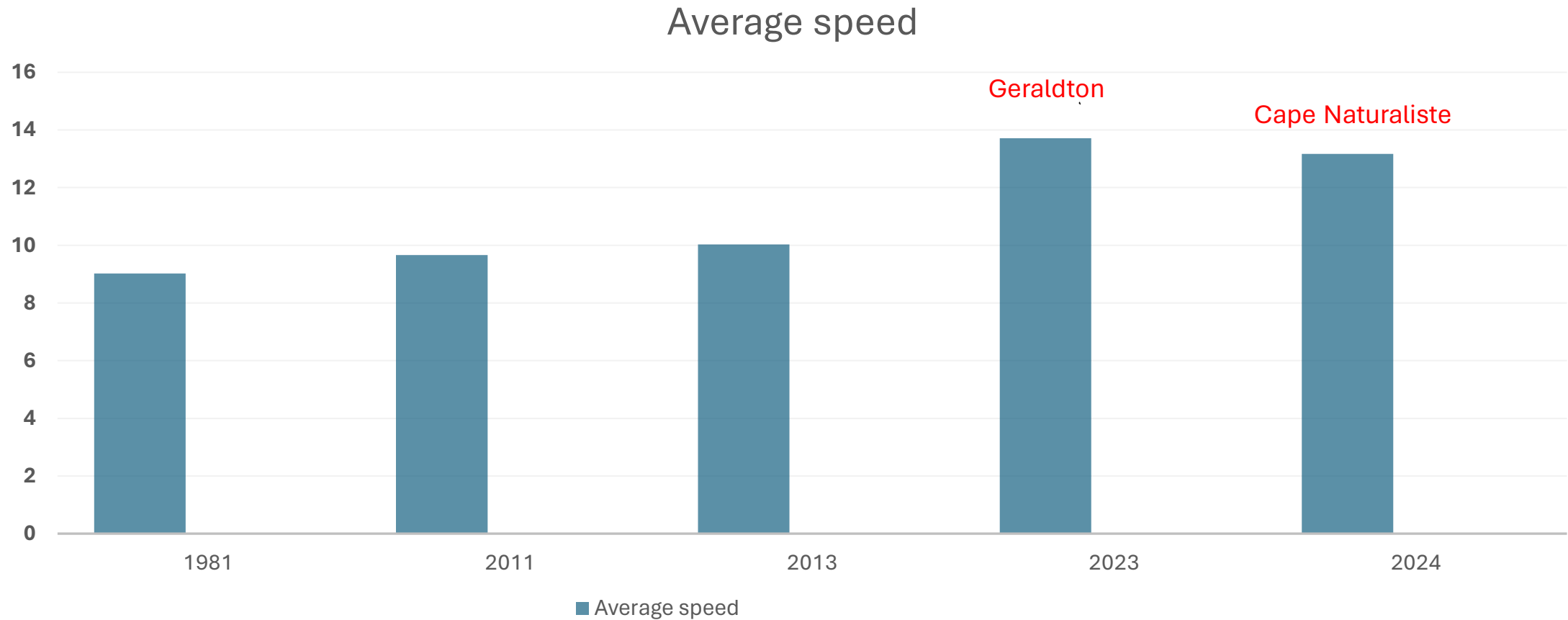
- Limit, Alan Briety
- 6 days 5 hours
- 9.11 knots average

2013

- Super Sled, Tony Mitchell
- 5 days 23 hours 30 minutes
- 10.03 knots average



Fremantle to Indonesia Race Record Speeds



Costs of joining an organised event

- Entry fees – boat & crew
- Structured safety requirements
 - Race Cat 1, no exemptions
 - Rally Cat 2, some flexibility
- Too much socialising!

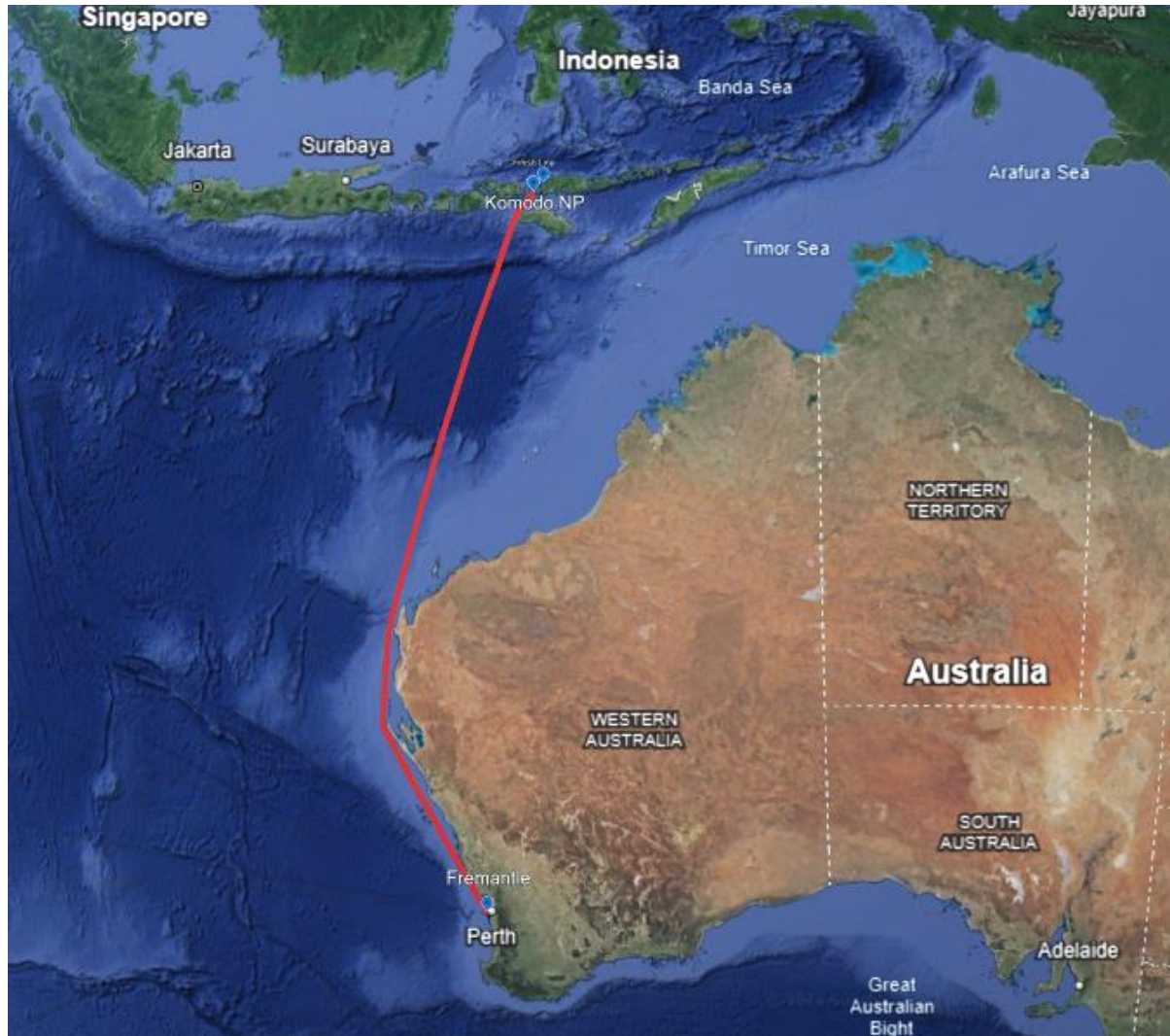
Benefits of joining an organised event

- Satellite tracking by a 24/7 race control team
 - Will work with emergency services (AMSA, WA water police, Sea rescue)
 - Can help arrange medical advice
 - Can assist with breakdowns, onshore coordination
- Coordination of Indonesia arrival clearance
 - Labuan Bajo special arrangements
- Coordination & advice
 - Border Force export / import
 - Biosecurity
- Sharing of knowledge & experience – and a post event celebration!

The Event Requirements

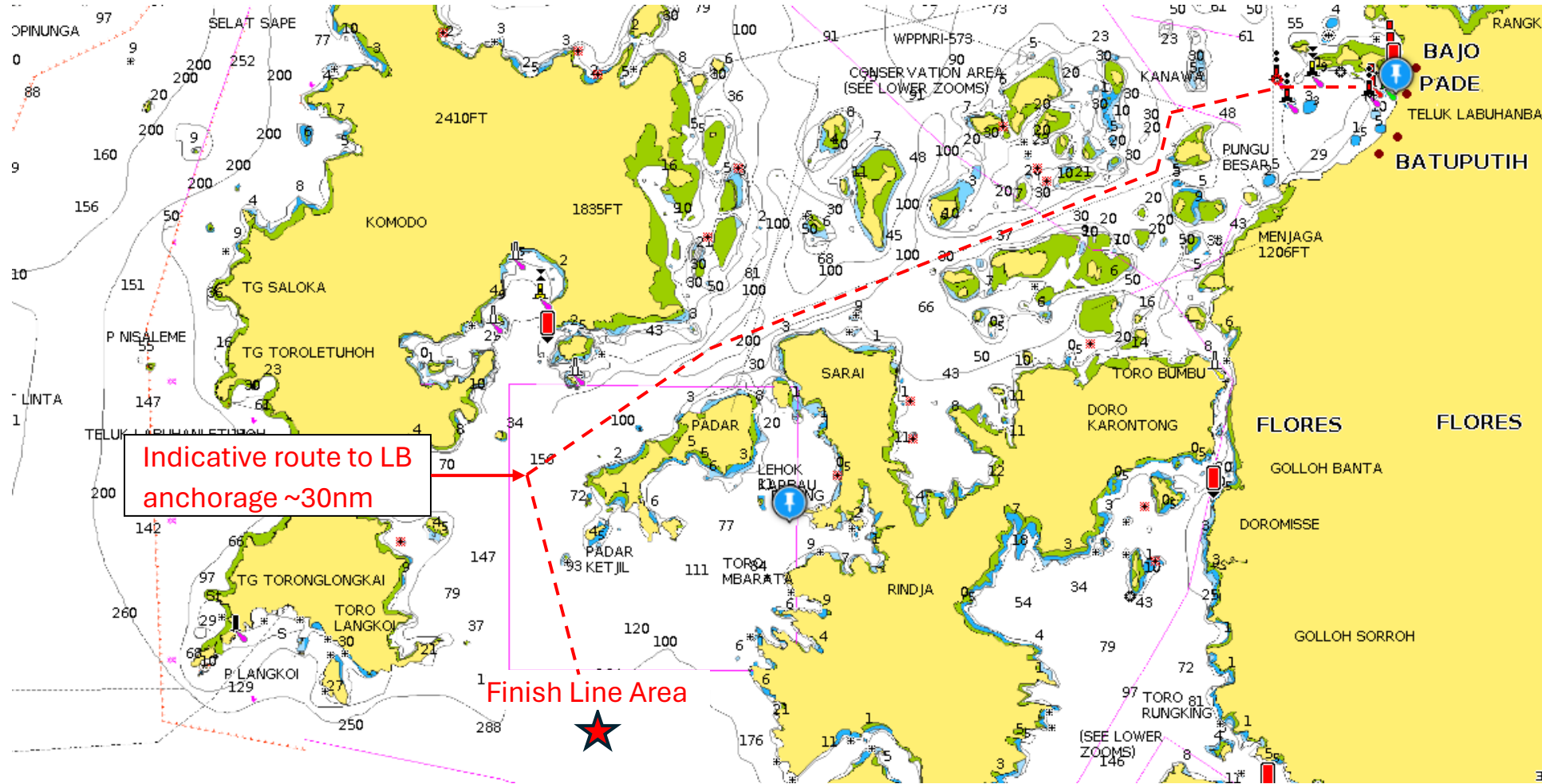
- The NOR will be available on the FSC website
- Register early to receive updates and assist OA planning
- Start 1200hrs **10th May 2025**. Presentation Labuan Bajo Friday **23rd May 2025**
- Race - Cat 1
- Rally - Cat 2 (note – Stability criteria still to be settled. Expected by end June)
- Australia Vessel registration required (permanent or temporary)
- Crew experience and training
- Qualifying passage
- Sat phone comms
- AIS mandatory
- Insurance

Race and Rally Course



- Fremantle to Komodo Finish ~1510nm
- (compare Fremantle to Bali ~1440nm)
- NW Cape to Sumba ~22 deg
- (compare NW Cape to Bali ~6 deg)

Finish Line and Anchorage



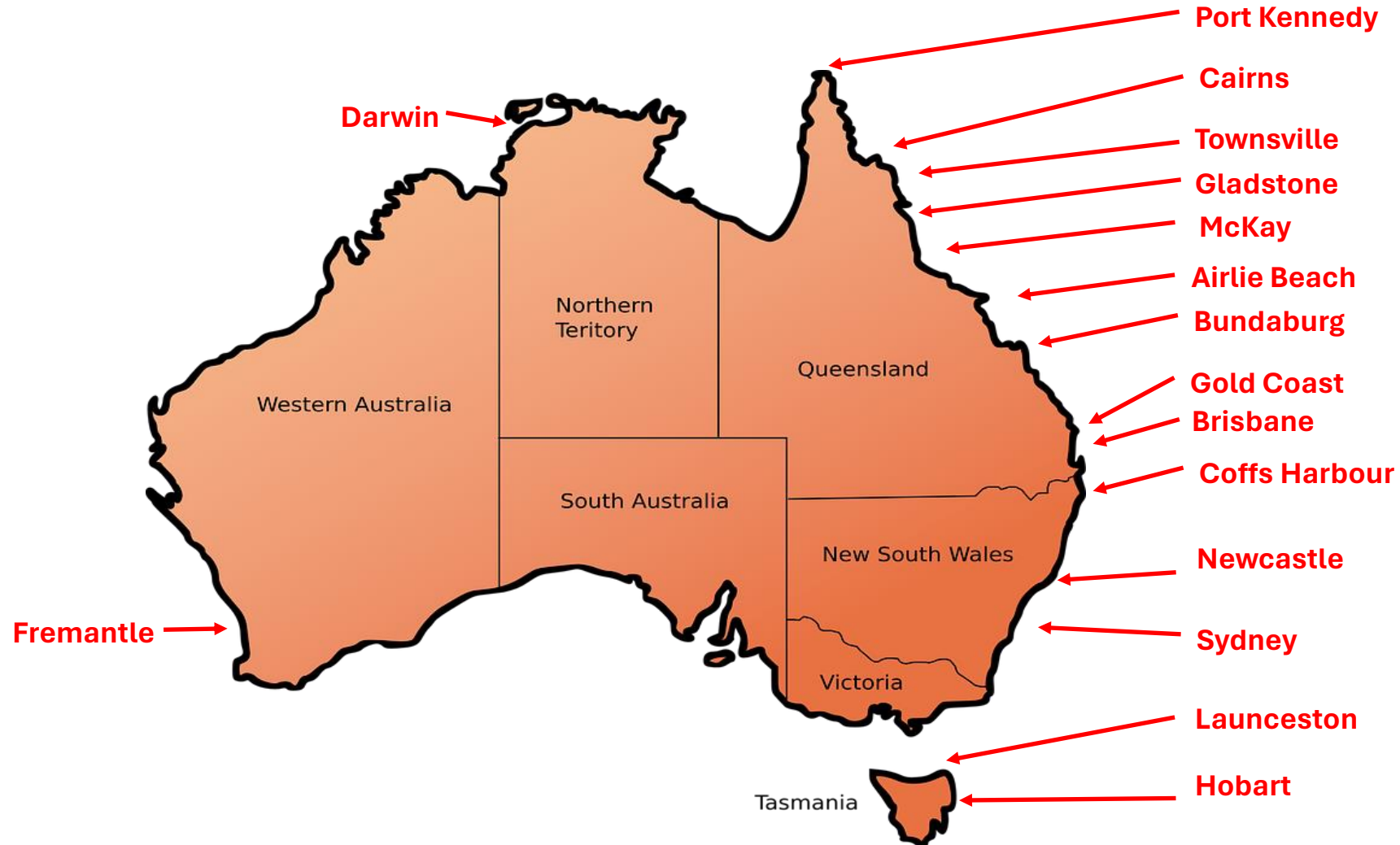
Australian and Indonesian Paperwork

Leaving/Re-entering Australia and Entering/Leaving Indonesia

- Both governments willing to streamline for our event
- FSC planning to engage agents to assist with Immigration, Customs and Biosecurity to reduce costs
- Yachts will need to supply information, in some cases directly to relevant authority
- Further information on processes will be provided as information becomes available

Biosecurity

- Post 2019 - Limited WA “Biosecurity First Points of Entry Non-Commercial Vessels”



Note: Australian Island FPOE's not shown ie Christmas Is, Cocos Is, Norfolk Is

Biosecurity

PLAN A

Re-establishing NW WA FPOE's

- **FSC has secured State Minister action to re-establish Biosecurity FPOE's for NCV's.**
- **DOT has been tasked with managing the process.**
- **FSC is engaged with DOT.**
- **May take some time.**

PLAN B

Fallback Process - NON-FPOE

- **Alternative process but has restrictions eg**
 - **Partial vessel (crew) clearance at Dampier, final at FSC.**
 - **Time constraints, port procedures etc**
- **Currently in use.**
- **FSC engaged with Biosecurity.**

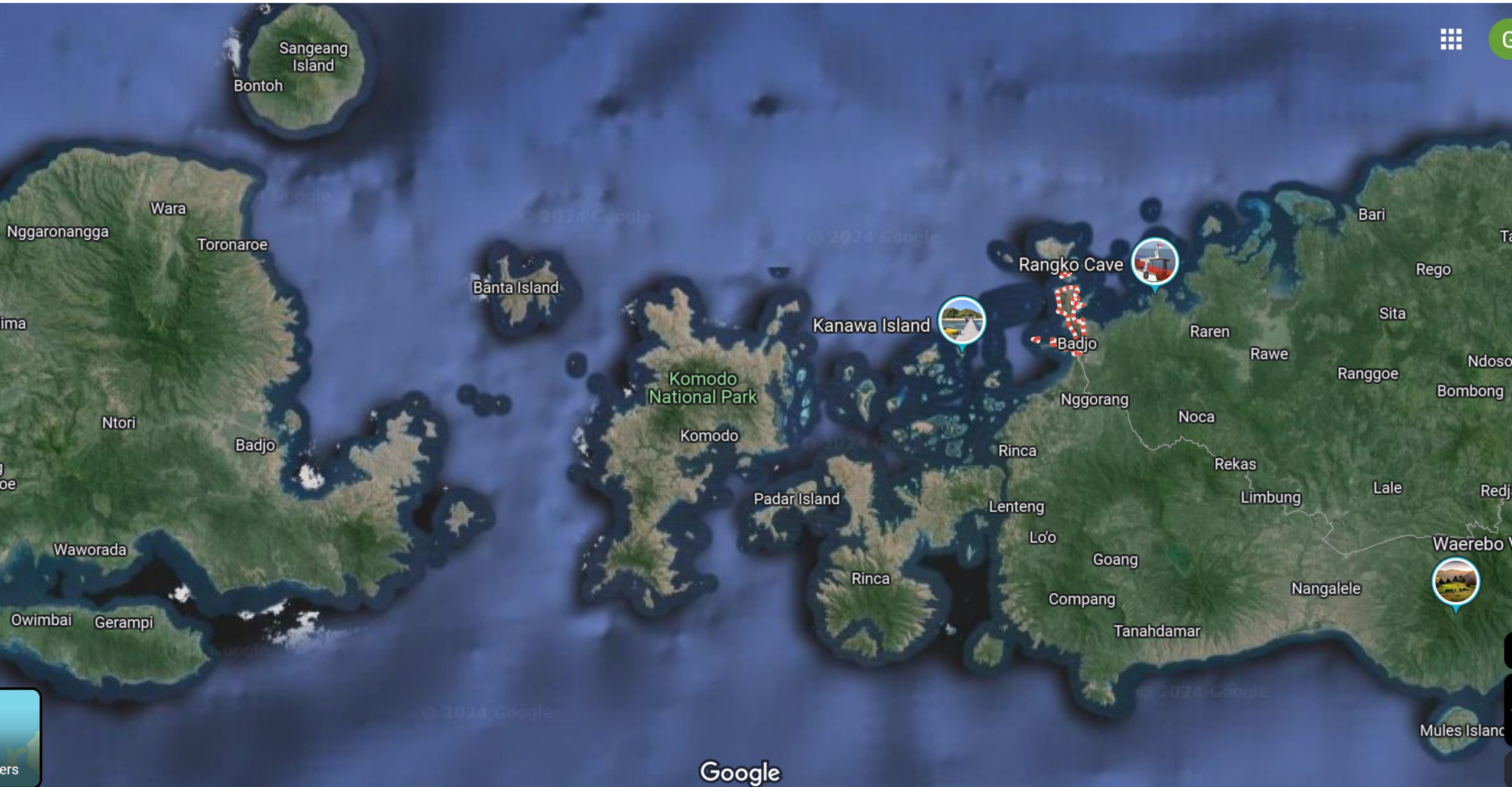
Indonesia – Largest archipelagic nation



Cruising Around Labuan Bajo







Cruising ideas

- Planning a cruise after presentation dinner
- Loose itinerary
- Maybe 5 days in Labuan Bajo / Komodo Region
- Then options to the east or west for a further 10 days
- Yachts free to join and leave as desired
- Explore options for engaging community e.g. through schools
- Coordination via WhatsApp or similar
- Best references – YouTube and Cruising Guide to Indonesia by Andy Scott



Cruising Guide to Indonesia
A pilot guide to Indonesian waters

Raja Ampat | Halmahera | Triton Bay | Morotai | Wakatobi | Sulawesi
Tual | Saumlaki | Ambon | Moluccas | Banda | Rote | Timor | Alor | Solor
Flores | Savu | Raijua | Sumba | Buton | Komodo Islands | Sumbawa
Lombok | Bali | Java | Kalimantan | Belitung | Lingga Islands | Riau
Anambas | Natuna | Sumatra | Mentawai | Nias | Telos Islands | Aceh
SECONDO EDIZIONE

- detailed charts with gps positions
- up to date anchorage information
- regional weather and planning
- national cruising guide

With over **400** anchorages through out the Indonesian Archipelago...
by **andy scott**

- Available online as Kindle or Pdf file from:

<https://cruisingguideindonesia.com/>

- Also available in various packages with waypoint files, flag, hardcopy book etc
- You can even buy just one region

An aerial photograph of a tropical beach. The water is a vibrant turquoise color, transitioning to a deeper blue as it meets the shore. The sand is bright white, and there are several large, dark rocks scattered along the coastline. The overall scene is serene and beautiful.

QUESTIONS

Next Steps

- Register to receive email updates
- Begin to plan yacht preparation
- Research on YouTube and buy Andy Scott book
- Next meeting – Cruising Section Topic Talk
 - **“Fremantle to Indonesia and Northern Australia”**
 - **Lyn Powell and Ian Whitehead**
 - **June 20 at 730pm**
- July info session planned
- Bintang time!