



KEELBOAT 2023 - 2024

SAILING HANDBOOK

FREMANTLE RACE CONTROL VHF 72 | 0478 637 135



Fremantle Sailing Club

EVENT EMERGENCY PLAN

IN AN EMERGENCY CONSIDER THE FOLLOWING PROCEDURE

Assess the situation:

Ensure Command * Ensure Vessel Survivability * Begin Emergency Communications

The Distress Message:

Broadcast the appropriate distress message on marine radio:

VHF Ch 16 (emergency) or
VHF Ch 73 / 81 / 82 (Sea Rescue Fremantle - Call sign VN6DI)
UHF/ 27 MEG Ch 88 or 90
HF Channels 4125, 6215, 8291
(Water Police only)

Person Lost at Sea:

Call WA Water Police:
VHF Channel 16 or Phone (08) 9442 8600

Vessel on Fire:

Call Dept. of Fire & Emergency Services:

Triple Zero (000)

Call Sea Rescue Fremantle:

VN6DI / VHF Channel 16 /
Ph.1800 273 728 (24 hours)

Casualty Disembarkation -
FSC Soling Jetty

Ambulance Meeting Point -
FSC Main Club House

Serious Injury/ Medical Emergency

Call WA Water Police:

Tel: (08) 9442 8600

Ambulance:

Triple Zero (000)

Emergency on water in marina:

Pick up location @ FSC Soling Jetty

Emergency at sea:

Pick up location @ FSC Soling Jetty

Automatic Electronic Defibrillator (AED) &

Resuscitation Equipment:

Sunset Deck, MV

Success & Works Area

Office

Casualty Disembarkation:

FSC Anglers Jetty



FSC Phone Numbers: Club Main Office: 9435 8800
Radio Room: 9435 8855

Harbour Master: 0434 539 943
Assistant Harbour Master: 0411 862 234



CONTENTS

Incident Reporting	Page 1
--------------------	--------

Organising Authority & Club Contacts	Page 2
--------------------------------------	--------

RACING SECTION

Notice of Race & General Sailing Instructions	Page 4
---	--------

Addendum A Schedule of Events	Page 13
-------------------------------	---------

Addendum B Venue	Page 25
------------------	---------

Addendum C Racing Areas	Page 27
-------------------------	---------

Addendum D Course Flags	Page 29
-------------------------	---------

Addendum E Courses	Page 30
--------------------	---------

Addendum F Heavy Weather Start	Page 38
--------------------------------	---------

Addendum G Marks	Page 39
------------------	---------

Addendum H Obstructions	Page 41
-------------------------	---------

Addendum I Club Handicap System	Page 42
---------------------------------	---------

Addendum J Hearing Requests	Page 44
-----------------------------	---------

Addendum K Trophies	Page 45
---------------------	---------

Addendum L Crew Sign On	Page 47
-------------------------	---------

Addendum M Code of Signal Flags	Page 49
---------------------------------	---------

Race Forms & Links	Page 50
--------------------	---------

CRUISING SECTION

Cruising	Page 51
----------	---------

Jib & Main Sailing	Page 53
--------------------	---------

Twilight Sailing	Page 55
------------------	---------

INCIDENT REPORTING

WHAT IS AN INCIDENT REPORT?

An incident report is a tool that documents any event that may or may not have caused injuries to a person, damage to property or the Club. It is used to capture injuries and accidents, near misses, property and equipment damage, health and safety issues. An incident report should be completed at the time an incident occurs.

WHAT IS THE PURPOSE OF INCIDENT REPORTING?

As part of Incident Management, the purpose of incident reporting is to record an incident, determine its possible cause, document any actions taken, and make it known to stakeholders. An incident report can be used in the investigation and analysis of an event. It includes the root cause and corrective actions to eliminate the risks involved and prevent similar future occurrences. Incident reports can also be used as safety documents that indicate potential risks and uncontrolled hazards found for future assessments.

ON-WATER INCIDENTS

Whilst participating in any sailing activity there is a fundamental obligation to inform Fremantle Race Control, Race Committee or the Boating Office as soon as practicable. For Club-sanctioned cruising events, the designated on-water safety boat is to be informed.

Types of incidents:

- Injury that required professional medical attention.
- Incidents involving the need to inform Fremantle Race Control such as contact between boats, man overboard (MoB), grounding or structural or equipment failure.
- Failure of FSC's management systems that resulted in a materially worse outcome.
- Incident requiring outside assistance e.g. activation of a beacon / distress signal, Sea Rescue, 3rd Party to the event / race.
- A near miss of any of the above. A near miss is considered as an incident where no property was damaged and no personal injury was sustained but were given a slight shift in time or position catastrophic damage and / or serious injury easily could have occurred.

WHERE IS THE INCIDENT REPORT FORM?

Forms can be obtained from the Boating Office, Harbour Office, Reception and in the foyer of the main Clubhouse. The form is also available online. Please scan this QR code to submit online.



Incident Report



ORGANISING AUTHORITY

FREMANTLE SAILING CLUB (FSC)

BOARD OF MANAGEMENT

Commodore	Kyle Timms
Vice Commodore	Anthony Kirke
Rear Commodore of Sail	Stephen Parkinson
Rear Commodore of Power	Charlotte Osborne
Rear Commodore of Fishing & Dive	Neville Norkett
Treasurer	Michael Webb
Board Member	Bill Henson
Board Member	Ian Sampson
Board Member	David Kenny
Board Member	John Rayner
Board Member	Rod Mulcahy
Board Member	Steve Delfos
Board Member	Anita Wyntje
Board Member	Maire Connolly
Chief Executive Officer	Craig Evans

SAILING COMMITTEE

Rear Commodore of Sail	Stephen Parkinson	steveparko@yahoo.com.au
Keelboat Captain	John Rayner	keelboat@fsc.com.au
Cruising Captain	Patrick Brenan	cruising@fsc.com.au
Dinghy Captain	Tim Brazier	dinghy@fsc.com.au
Protest Chair	Paul Green	paulsgonesailing@y7mail.com
Sailing Manager	Chris White	sailingmanager@fsc.com.au

KEELBOAT COMMITTEE

Keelboat Captain	John Rayner	keelboat@fsc.com.au
Vice-Captain	Ian Joel	jollyhandy@outlook.com
Secretary	Kath Moulden	kath.moulden@IQVIA.com
Treasurer	Rob Wilson	rob.wilson@cefc.com.au
Race Officer	Cam Berg	Cberg@bigpond.net.au
Race Officer	Frank Rodda	rodda@iinet.net.au
Race Officer	Trevor Milton	ramp@fsc.com.au
Handicapper	Ernie Delfos	nancyandernie@gmail.com
Safety Officer	Doug Steel	doug.dougstudio@gmail.com
Offshore Support	Maire Connolly	maireconnolly@gmail.com
Committee Member	Amanda Casebier	ramp@fsc.com.au
Committee Member	Martin Graville	martingr@iinet.net.au
Committee Member	Steve Laws	stvelaws@iinet.net.au
Committee Member	Peter Kennington	kennop@bigpond.com

CRUISING SECTION

Cruising Captain	Patrick Brenan	cruising@fsc.com.au
Secretary	Baird Gordon	
Treasurer	Arianne Flora	
Safety Officer	Ole Otness	
Member	Alpha Thorpe	
Member	Dean McKenna	
Member	Doug Steel	
Member	Sandy Brennan	

OFFICIALS

Race Committee

Rear Commodore Sail
Race Officer
Section Captain

Sailing Manager
Handicapper

Race Officers

Trevor Milton
Cameron Berg
Frank Rodda
Glenn Porter

Paul Harford
Matthew Till
Roger Joyner
Anne South

Elke McAlindon
David White
Mike Giles

Protest Committee

Paul Green National Judge (NJ)

Brendon Green Club Judge (CJ)

Ian Joel Arbitrator

Auditors

Graeme Martin	National Equipment Auditor (NEA)	Peter Kennington	National Equipment Auditor (NEA)
Ole Otness	National Equipment Auditor (NEA)	Douglas Steel	National Equipment Auditor (NEA)
Michael Thorpe	National Equipment Auditor (NEA)	David Kenny	National Equipment Auditor (NEA)
Phillip Hearse	National Equipment Auditor (NEA)	Andrew Nuttman	National Equipment Auditor (NEA)

STAFF CONTACTS

Boating Office

Sailing & On Water Manager	Chris White	08 9435 8817	sailingmanager@fsc.com.au
Sailing Administrator	Scott Nunn	08 9435 8821	sailingadmin@fsc.com.au
Training Centre Principal & Senior Coach	Chris Charlwood	08 9435 8809	sailing@fsc.com.au

Harbour Office

Waterfront Operations	Brad Muir	08 9435 8851	projects@fsc.com.au
Harbour Master	Jason Hands	08 9435 8852	hm@fsc.com.au
Assist Harbour Master	Sam Blackburn	08 9435 0857	ahm@fsc.com.au
Harbour & Pen Coordinator	Nicole Dalton	08 9435 8801	penadmin@fsc.com.au
Harbour Office Administrator	Shirley Dolleslagers	08 9435 8850	harbourreception@fsc.com.au
Maintenance Assistant	Peter Pillinger	08 9435 8849	maintenanceassist@fsc.com.au

AMENDMENTS TO KEELBOAT NoR & GENERAL SIs

Notice to Competitors (NTC)

NTC#	Description	Posted
1	Changes to Addendum A Schedule of Events <ul style="list-style-type: none"> • Pre-Season Briefing Date • Mandurah races safety category 	19 Sept 23
2	10 various changes to SIs 1, 7, 10, 17, 18, 22, 24, 29, Addendum F and Addendum M	12 Oct 23
4	Catalpa Feeder Race 1 st warning now 0855 - Addendum A Schedule of Events Div 6 added to Gage Roads Race - Addendum A Schedule of Events SI 18.1 (b) Shortening Course added	17 Nov 23
6	The new IRC Rule 21.4 requiring sail measurement stamps on sails that have been measured for an IRC Endorsed Certificate after 2023 will not apply for the Keelboat Winter Series 2024.	21 Mar 24
7	Day buoy description	13 Apr 24
8	Time of 1 st warning signal for Gage Roads Race is changed to 0920.	24 Apr 24





Organising Authority (OA)
Fremantle Sailing Club (FSC)
KEELBOAT
NOTICE OF RACE &
GENERAL SAILING INSTRUCTIONS

The Keelboat Sailing Season will be conducted on the waters of Gage Roads and Cockburn Sound from 07 October 2023 until 10 August 2024.

The notation '[NP]' in a rule means that a boat may not protest another boat for breaking that rule. This changes RRS 60.1(a).

1. RULES

- 1.1. The event is governed by the rules as defined in The Racing Rules of Sailing (RRS).
- 1.2. Boats shall comply with AS Special Regulations Part 1, Category 5 (Category 6 for Terry Fisher Series).
- 1.3. **RRS 40.1 applies. Boats without lifelines (see AS SR Part 1 5.01.1 (j)). It is strongly recommended for competitors sailing doublehanded wear a PFD at all times whilst afloat.**
- 1.4. IRC Rules (2023) Parts A, B & C applies where applicable.
- 1.5. FSC Performance Handicapping System (PHF) applies.
- 1.6. Appendix T Arbitration will apply.
- 1.7. Supplementary Sailing Instructions (SSIs) may be issued for individual events. If there is conflict between the SSIs and the Notice of Race and General Sailing Instructions, then the SSIs shall prevail. This changes RRS 63.7.
- 1.8. **Sails**
Boats competing in Jib and Main divisions shall use working foresails so as the luff is attached along the forestay(s). No Spinnakers.

2. NOTICE TO COMPETITORS(NTC's)

- 2.1. NTC's will be posted on the official notice board (ONB) online and may also be displayed on the Sailing Noticeboard in the foyer of the main Clubhouse.
<https://fsc.com.au/onb/>
- 2.2. Supplementary Sailing Instructions (SSIs) will be available on the official notice board.

3. CHANGES TO SAILING INSTRUCTIONS(SIs)

- 3.1. Any change to the SIs will be posted not less than 90 minutes before the first race of the day, unless this time is changed in any SSIs. Any change to the schedule of races will be posted by 1800 on the day before it will take effect.
- 3.2. Changes to an SI may be made on the water by displaying Code Flag 'L' from the Race Committee vessel. The change may be communicated either orally or in writing.

4. SIGNALS MADE ASHORE

- 4.1. Signals made ashore will be displayed from the main flag mast located on the VIP lawn at FSC or other locations described in SSIs.
- 4.2. When flag AP is displayed ashore, '1 minute' is replaced with 'not less than 45 minutes' in Race Signals AP.

5. COMMUNICATION [DP]

- 5.1. While racing, from the first warning signal until the end of the last race of the day, except in an emergency, a boat shall not make voice or data transmissions and shall not receive voice or data communication that is not available to all boats.
- 5.2. All boats shall carry a VHF radio capable of communicating on VHF 72 and 16.
- 5.3. On the water, the Race Committee may make courtesy broadcasts to competitors on VHF 72 or on the nominated channel stated in SSIs.

6. CODE OF CONDUCT [DP]

Competitors and support persons shall comply with reasonable requests from race officials.

7. ELIGIBILITY AND ENTRY

- 7.1. Events are open to all boats of the following Divisions:

Summer Series (inc. Consistency, Championship & individual trophy races)

Division 1

Division 2

Division 6 Jib & Main

Terry Fisher Series

Division 1 Fully crewed with spinnakers

Division 2 Doublehanded with spinnakers

Division 3 Fully crewed Jib & Main

Division 4 Doublehanded Jib & Main

Coastal Series (inc. Catalpa Feeder, Catalpa Classic, Mike Harvey, Warne Shield, Cockburn Cup & Gage Roads races)

Division 1

Division 2

Division 6 Jib & Main

Winter Series (inc. Valmadre Cup & Performance Series)

Division 1

Division 2

Division 6 Jib & Main

- 7.2. Class Associations may be eligible for their own start if a minimum of five (5) entries have been received by the first race.

- 7.3. Boats may enter these events by registering online at:

<https://fsc.com.au/onb/>

- 7.4. To be considered an entry in the events, a boat shall complete all registration requirements pay all applicable fees and submit the following documentation:

- a) Equipment Audit Form appropriate to the designated safety category. Refer SI 1.2
- b) Certificate of Insurance

- 7.5. The Club Handicapping (PHF) and IRC rating systems apply as follows:

Event	PHF	IRC
Summer Series	All Divisions	N/A
Terry Fisher Series	All Divisions	N/A
Coastal Series	All Divisions	N/A
Winter Series	All Divisions	Divisions 1 & 2

Club Handicapping System (Refer **Addendum I.**)

7.6. Crew Sign On [SP]

Boats should sign on skipper and all crew members participating in any FSC race before their first warning signal of the day. Refer **Addendum L**.

7.7. IRC Ratings

a) Boats entered in the Winter Series waiting to receive a new IRC certificate from the Rating Authority for the year 01 June 2024 – 31 May 2025, may use their TCC from the previous rating year upon application to the Race Committee. This applies up to 30th June 2024. Boats will not change divisions as a result of a rating change during the series.

b) **IRC Rule 21.4 does not apply.**

7.8. [NP]The Race Committee will assess entries, determine handicaps and allocate or combine boats into Divisions. Boats may not change Divisions without prior approval from the Race Committee.

8. FEES

8.1. Entry fees are as follows:

	Summer Series	Terry Fisher Series	Winter Series	Coastal Series
FSC Boats	N/A	N/A	N/A	Refer SSIs
Visiting Boats	\$150	\$220	\$150	Refer SSIs

8.2. Entry fee includes berthing at FSC. Refer NoR/SI 2. BERTHING

8.3. If a boat entry is withdrawn, the entry fee will be refunded as follows:

Cancelation Date	Entry Fee
2 or more weeks notice	100%
Less than 2 weeks notice	No refund
Non-attendance	No refund

9. ADVERTISING

9.1. Boat names and any advertising shall not be in conflict with FSC's sponsors and shall be in accordance with acceptable public standards.

9.2. Boats may be required to display advertising chosen and supplied by the OA.

10. SCHEDULE OF EVENTS



10.1. Refer **Addendum A**.

10.2. **To alert boats that a race or sequence of races will begin soon, the orange starting line flag will be displayed with one sound at least 5 minutes before a warning signal is made.**

11. DIVISION FLAGS

11.1. Division flags shall be displayed from the backstay or mainsail leech while racing.

11.2. The flag shall be removed when no longer racing.

					
Division 1 (Naval Numeral 1)	Division 2 (Naval Numeral 2)	Division 3 (Naval Numeral 3)	Division 4 (Naval Numeral 4)	Division 6 (Naval Numeral 6)	Combined (White Flag)

11.3. When the Race Committee displays the white flag for combined division starts, boats shall display their assigned Division flag i.e. Naval Numeral 1 – 6

12. EQUIPMENT INSPECTION

Each boat shall produce or verify the existence of the following before their first race:

a) A valid rating certificate if applicable.

b) A valid Australian Sailing Equipment Audit Form signed by an accredited Equipment Auditor.

13. RACING AREAS

Racing will be conducted on the waters of Cockburn Sound (Southern Courses) and Gage Roads (Northern courses). Refer **Addendum C**.

14. COURSES & MARKS

14.1. No later than the warning signal, the Race Committee will designate the course by an international numeral pennant corresponding to the course number displayed below the Division Flag. Refer **Addendum D**.

14.2. **Addendum E** shows the courses, the required order in which marks are to be passed, and the required side on which each mark is to be rounded. Courses have been allocated as follows:

Event	Courses
Summer Series	Southern courses
Terry Fisher Series	Terry Fisher courses
Performance Series	Southern courses
Valmadre Series	Northern courses
Coastal Series	Refer SSIs

14.3. **Addendum G** shows the approximate location of the marks.

14.4. If a mark is missing or out of position while boats are racing, the Race Committee shall, if possible, substitute with a replacement mark displaying Code Flag 'M' and advise by VHF radio.

14.5. If a mark is missing and Code Flag 'M' is not in position, boats shall round/pass in the mark's usual position. This changes RRS 34. The Race Committee may require evidence of the rounding/passing.

14.6. **When a Day Buoy is listed in a course, it will be an inflatable yellow mark situated approx. 1 Nm to windward of the starting line. No later than the warning signal, the Race Committee vessel will display a red (to port) or green (to starboard) flag indicating the required side to round.**

15. PENALTY SYSTEM

15.1 For all boats, RRS 44.1 is changed so that the Two-Turns Penalty is replaced by the One-Turn Penalty.

15.2 Scoring Penalty – for some specific breaches of the rules, the Race Committee may apply a scoring penalty [SP] without a hearing. The Race Committee may still protest a boat when they consider the SP inappropriate. The scoring penalty is 2 points. This changes RRS 63.1 & Appendix A5.

15.3 The notation '[DP]' in a rule means that the penalty for a breach of the rule may, at the discretion of the protest committee, be less than disqualification.

16. OBSTRUCTIONS

Refer **Addendum H**.

17. THE START

17.1. The starting line will be between a mast displaying an orange flag on the Race Committee Vessel and the course side of either of the following:

Courses	Mark
Southern Courses	A FSC Club Mark
Terry Fisher Courses	A yellow inflatable buoy
Northern Courses	A yellow inflatable buoy
Coastal Courses	Refer SSIs

- 17.2. A crowding mark may be laid adjacent the Race Committee Vessel. When laid, boats shall not sail between the crowding mark and the Race Committee Vessel.
- 17.3. [DP] Boats whose warning signal has not been made shall avoid the starting area during the starting sequence for other races.
- 17.4. **A boat that does not start within 20 minutes after her starting signal will be scored Did Not Start (DNS) without a hearing. This changes RRS A5.1 and A5.2**
- 17.5. When a General Recall is signalled, the warning signal for a new start for the first recalled fleet will be made at the starting signal of the last fleet in the original sequence. New starts for other recalled fleets will follow in the order thereafter. A General Recall signal will be displayed for one minute. This changes RRS 29.2 and race signal, 'First Substitute'.
- 17.6. **South Mole Start**
Refer **Addendum F** Heavy Weather Start and also diagram below.

18. THE FINISH

18.1. a) Race Committee Vessel Finish

The finishing line is between a mast displaying a blue flag on the Race Committee vessel and the course side of a FSC mark.

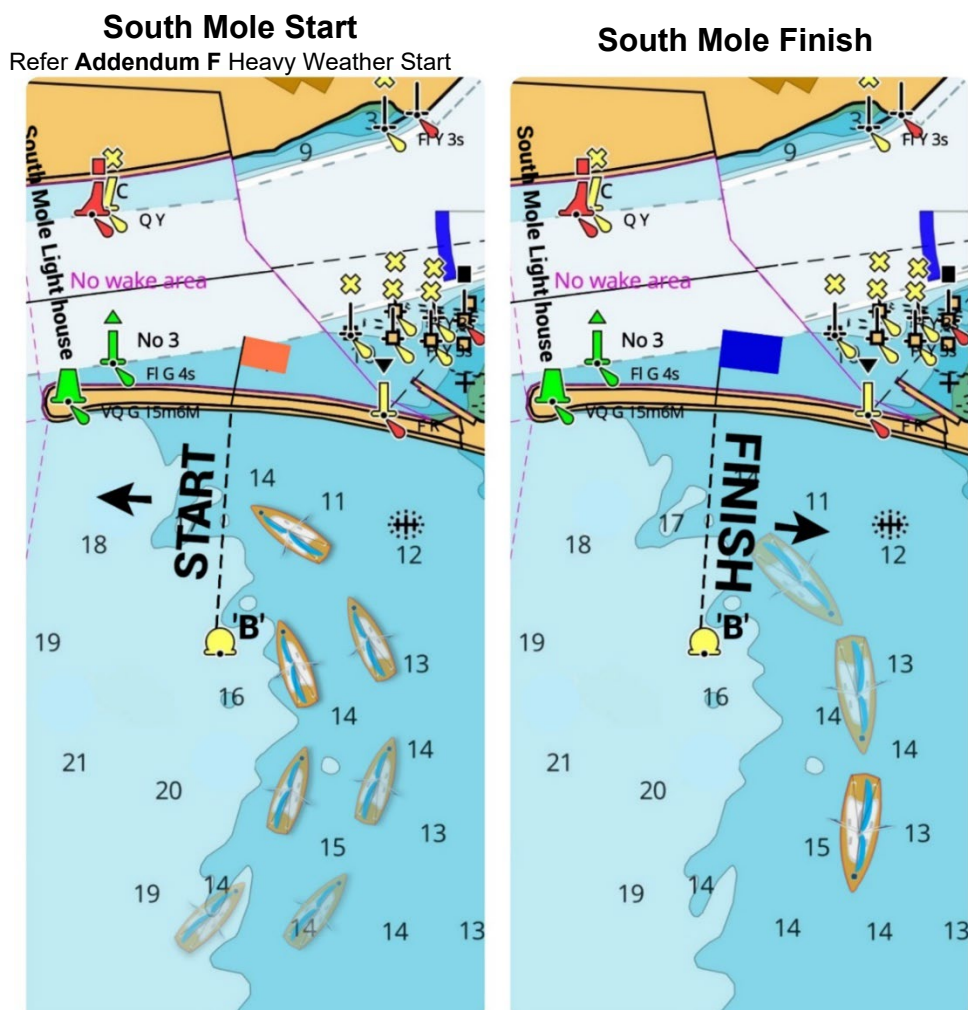
b) Shortened Course Finish. RRS 32.2 (a) applies.

18.2. South Mole Finish

The finishing line is between FSC Mark B at the starboard end and a staff displaying a blue flag at the port end, approximately 150m east of South Mole Lighthouse as shown in the diagram below.

18.3. Northern Courses [DP]

Boats finishing at South Mole shall notify the Fremantle Race Control on VHF upon rounding the last mark before the Harbour Entrance marks.



19. TIME LIMITS

19.1 The race time limits are shown in the table below:

Event	Time Limit
Summer Series	1700
Terry Fisher Series	1400
Winter Series	1700
Coastal Series	Refer SSIs

19.2 Boats not finished by the time limit shall be scored DNF. This changes RRS 35, A3 and A5.

19.3 If no boat has finished before the time limit, the race will be abandoned.

20. PROTESTS AND REQUESTS FOR REDRESS

Refer **Addendum J**.

21. SCORING

Scoring will be in accordance with RRS A5.3 as follows:

Consistency Series	
Races in series	16
Races constitute a series	10
Discards after 7 races	1
Discards after 11 races	2
Discards after 15 races	3

Club Championship Series	
Races in series	7
Races constitute a series	3
Discards after 6 races	1

Coastal Series	
Races in series	6
Races constitute a series	3
Discards after 5 races	1

Terry Fisher Series	
Races in series	6
Races constitute a series	3
Discards after 5 races	1

Winter Series <small>(Overall series)</small>	
Races in series	8
Races constitute a series	3
Discards after 7 races	1

Valmadre Cup Series <small>(Sub series)</small>	
Races in series	4
Races constitute a series	1
Discards	0

Performance Series <small>(Sub series)</small>	
Races in series	4
Races constitute a series	1
Discards	0

22. SAFETY [DP][NP]

All boats shall comply with the following requirements:

- a) Log on to Fremantle Race Control using VHF 72 between the period 1 hour before the first warning signal and no later than the first warning signal of the day.
- b) Maintain a constant listening watch on VHF 72 and on standby for distress calls on VHF 16.
- c) Boats retiring prior to starting or during a race shall notify Fremantle Race Control by VHF 72 or by phone before leaving the race area.
- d) Carry an EPIRB as per DoT regulations.
- e) A boat shall have a minimum of two crew inclusive of the helmsperson and each capable of sailing the boat.
- f) The use of self-steering equipment is permitted for boats sailing doublehanded following their starting signal. This changes RRS 52.

23. BERTHING

23.1. Visiting boats will be berthed at no extra cost, until exhaustion of available places at the FSC Harbour under the responsibility of the owner or skipper.

23.2. The assignment of berthing places will be according to the order in which the entries were received.

23.3. Boats shall comply with directions from the FSC Harbour Master at all times.

23.4. Boats shall register via the link below:

<https://fsc.com.au/visiting-vessels/>

23.5. Refer **Addendum B** for berthing plan.

24. COMMERCIAL SHIPPING

24.1. Boats shall maintain a minimum distance of 100 metres from all commercial shipping particularly in the following areas:

- a) At the entrance to Fremantle Harbour.
- b) At the northern entrance to and in the Success and Parmelia Channels, Cockburn Sound.

24.2. Boats that damage a FPA or DoT mark shall immediately notify FSC Harbour Master of the time, date and nature of the damage. Any cost associated shall be borne by the owner or person in charge of the boat/s involved.

25. RISK STATEMENT

RRS 3 states:

'The responsibility for a boat's decision to participate in a race or to continue to race is hers alone.'

By participating in these events each competitor agrees and acknowledges that sailing is a potentially dangerous activity with inherent risks. These risks include strong winds and rough seas, sudden changes in weather, failure of equipment, boat handling errors, poor seamanship by other boats, loss of balance on an unstable platform and fatigue resulting in increased risk of injury.

26. INSURANCE

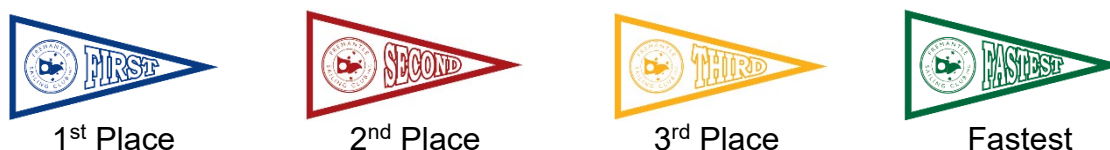
Each participating boat shall be insured with a valid third-party liability insurance with a minimum cover of AUD \$10,000,000 per incident or the equivalent.

27. MEDIA

By participating in these events, each competitor and his/her support persons automatically grant to the OA, Australian Sailing and their sponsors the absolute right, authority and permission in perpetuity to make, use, distribute and show in any media, from time to time at their discretion, any images, audio and audio visual recordings, biographical information, reproductions (and to make edits and adaptations of the same) of competitors and/or their boat/s during the period of the competition without compensation.

28. PRESENTATIONS AND PRIZES

- 28.1. Results presentations will be announced in the FSC Bar area after each race approximately 1 hour after the last boat finishes the last race of the day. The Race Committee vessel may make a sound signal approximately 30 minutes prior to announcement of results.
- 28.2. Pennants will be awarded in each race and series for all divisions or classes based on handicap / rating results and fastest over the line as follows:



- 28.3. Season trophies will be awarded to divisions with 5 or more entries.
- 28.4. Additional prizes will be awarded at the discretion of the Organising Authority.
- 28.5. Trophies will be awarded as per **Addendum K**.

29. KEY CONTACTS

Fremantle Race Control	VHF 72	0478 637 135
Fremantle Radio Room		08 9435 8855
Sailing Manager	Chris White	0408 478 414
Sailing Administrator	Scott Nunn	0478 073 452
Senior Coach	Chris Charlwood	0467 905 760
Harbour Master	Jason Hands	0434 539 943
Assistant Harbour Master	Sam Blackburn	0411 862 234

TIME	DIVISION	EVENT	SSIs	CAT	OA
Thursday, 07 September 2023					
1800		Ocean Racing WA Season Opener at RPYC Annexe			ORWA
Saturday, 16 September 2023					
0900	2	Success Cup / Captain Stirling Cup R1 - Foundation Race - George Law Memorial Trophy	SSIs	4	FSC
0905	1	Success Cup / Captain Stirling Cup R1 - Foundation Race - George Law Memorial Trophy	SSIs	4	FSC
		Cruising Spring Weekender			RPYC
Sunday, 17 September 2023					
1300		Cruising J&M			FSC
Thursday, 21 September 2023					
TBA		Pre-Season Briefing			FSC
Sunday, 24 September 2023					
1400		America's Cup 40th Anniversary at Victoria Quay Precinct			
Monday, 25 September 2023					
<i>Public Holiday - King's Birthday</i>					
Wednesday, 27 September 2023					
1830		Pre-Season Briefing			FSC
Saturday, 30 September 2023					
		AFL Grand Final			
		No Club Racing			
Sunday, 01 October 2023					
1700		Cruising Section Wine & Waves			FSC
		Opening Day - Nedlands Yacht Club			NYC
		Opening Day - The Cruising Yacht Club of WA			TCYC
Saturday, 07 October 2023					
		Opening Day & Sail Past			FSC
1345	1	Opening Day Race	SSIs	5	FSC
1350	2	Opening Day Race	SSIs	5	FSC
1355	6	Opening Day Race	SSIs	5	FSC
		Cruising J&M Course 2			FSC
		Opening Day - Mounts Bay Sailing Club			MBSC
Sunday, 08 October 2023					
		Opening Day - South of Perth Yacht Club			SoPYC

TIME	DIVISION	EVENT	SSIs	CAT	OA
Saturday, 14 October 2023					
1345	1	Consistency Series R1 - Memorial Perpetual Shield		5	FSC
1350	2	Consistency Series R1 - Memorial Perpetual Shield		5	FSC
1355	6	Consistency Series R1 - Memorial Perpetual Shield		5	FSC
		Opening Day - Royal Perth Yacht Club			RPYC
		Opening Day - Hillarys Yacht Club			HYC
Sunday, 15 October 2023					
0900	2	Captain Stirling Cup R2 - The West Coaster Race	SSIs	4	FSC
0905	1	Captain Stirling Cup R2 - The West Coaster Race	SSIs	4	FSC
1300		Cruising J&M			FSC
Saturday, 21 October 2023					
1345	1	Consistency Series R2 / Championship R1		5	FSC
1350	2	Consistency Series R2 / Championship R1		5	FSC
1355	6	Consistency Series R2 / Championship R1		5	FSC
		Cruising - Stargaze Cruise			FSC
		Opening Day - Royal Freshwater Bay Yacht Club			RFBYC
Saturday, 28 October 2023					
0925		Success Cup R2 - Geraldton Ocean Classic (Fremantle to Geraldton)		2	SoPYC
1030		Sail Freo		6	FSC
Sunday, 29 October 2023					
1030		Sail Freo		6	FSC
Wednesday, 01 November 2023					
1800		Twilight Sailing			FSC
Friday, 03 November 2023					
0925		Geraldton to Fremantle Race		2	SoPYC
Saturday, 04 November 2023					
1345	1	Consistency Series R3		5	FSC
1350	2	Consistency Series R3		5	FSC
1355	6	Consistency Series R3		5	FSC
		Cruising / Power - Rotto Olympics			FSC
Sunday, 05 November 2023					
		Cruising / Power - Rotto Olympics			FSC
Wednesday, 08 November 2023					
1800		Twilight Sailing			FSC
Saturday, 11 November 2023					
1345	1	Consistency Series R4 / Championship R2 / Ken Cook Memorial Trophy		5	FSC
1350	2	Consistency Series R4 / Championship R2 / Ken Cook Memorial Trophy		5	FSC
1355	6	Consistency Series R4 / Championship R2 / Ken Cook memorial Trophy		5	FSC
		Cruising Progressive Dinner			FSC
TBA		Governor's Cup			RFBYC

The times stated for races refers to the 1st warning signal.
Please refer to Schedule of Events online for current information.

TIME	DIVISION	EVENT	SSIs	CAT	OA
Sunday, 12 November 2023					
0900	4	Terry Fisher Series R1		6	FSC
0905	3	Terry Fisher Series R1		6	FSC
0910	2	Terry Fisher Series R1		6	FSC
0915	1	Terry Fisher Series R1		6	FSC
Wednesday, 15 November 2023					
1800		Twilight Sailing			FSC
Saturday, 18 November 2023					
0900	2	Success Cup R3 - Coventry Reef Race	SSIs	4	FSC
0905	1	Success Cup R3 - Coventry Reef Race	SSIs	4	
Sunday, 19 November 2023					
1300		Cruising J&M			FSC
Wednesday, 22 November 2023					
1800		Twilight Sailing			FSC
Saturday, 25 November 2023					
0925	2	WA IRC State Championships including Dolphin Race		4	RFBYC
0930	1	WA IRC State Championships including Dolphin Race		4	RFBYC
1345	1	Consistency Series R5		5	FSC
1350	2	Consistency Series R5		5	FSC
1355	6	Consistency Series R5		5	FSC
Sunday, 26 November 2023					
0925	2	WA IRC State Championships including Gordon Craig Ocean Race		4	RFBYC
0930	1	WA IRC State Championships including Gordon Craig Ocean Race		4	RFBYC
Wednesday, 29 November 2023					
1800		Twilight Sailing			FSC
Saturday, 02 December 2023					
0855	1,2,6	Coastal Series R1 - Catalpa Feeder Race to Rockingham	SSIs	5	FSC
1425	Fenians	Coastal Series R2 - Catalpa Classic Race to Fremantle		5	TCYC
1440	WA Auth.	Catalpa Classic Race to Fremantle		5	TCYC
Sunday, 03 December 2023					
1300		Cruising J&M			FSC
Wednesday, 06 December 2023					
1800		Twilight Sailing			FSC
Saturday, 09 December 2023					
1345	1	Consistency Series R6		5	FSC
1350	2	Consistency Series R6		5	FSC
1355	6	Consistency Series R6		5	FSC

The times stated for races refers to the 1st warning signal.
Please refer to Schedule of Events online for current information.

TIME	DIVISION	EVENT	SSIs	CAT	OA
Sunday, 10 December 2023					
0900	4	Terry Fisher Series R2		6	FSC
0905	3	Terry Fisher Series R2		6	FSC
0910	2	Terry Fisher Series R2		6	FSC
0915	1	Terry Fisher Series R2		6	FSC
Wednesday, 13 December 2023					
1800		Twilight Sailing			FSC
Saturday 16 December 2023					
1345	1	Consistency Series R7 / Championship R3 / Ron Warren Trophy		5	FSC
1350	2	Consistency Series R7 / Championship R3 / Ron Warren Trophy		5	FSC
1355	6	Consistency Series R7 / Championship R3 / Ron Warren Trophy		5	FSC
Wednesday, 20 December 2023					
1800		Twilight Sailing			FSC
Saturday, 23 December 2023					
		No Club Racing			FSC
Monday, 25 December 2023					
<i>Public Holiday - Christmas Day</i>					
Tuesday, 26 December 2023					
<i>Public Holiday - Boxing Day</i>					
		Cockburn Sound Regatta			TCYC
1250		Sydney Hobart Yacht Race	1		CYCA
Wednesday, 27 December 2023					
		No Twilight Sailing			FSC
		Cockburn Sound Regatta			TCYC
1100		Launceston to Hobart Race			DSS
1255		Melbourne to Hobart Race			ORCV
Thursday, 28 December 2023					
		Cockburn Sound Regatta			TCYC
Friday, 29 December 2023					
		Cockburn Sound Regatta			TCYC
Saturday, 30 December 2023					
		No Club Racing			FSC
		Cockburn Sound Regatta			TCYC
Monday, 01 January 2024					
<i>Public Holiday - New Years Day</i>					
Wednesday, 03 January 2024					
		No Twilight Sailing			FSC

The times stated for races refers to the 1st warning signal.
Please refer to Schedule of Events online for current information.

TIME	DIVISION	EVENT	SSIs	CAT	OA
Saturday, 06 January 2024					
		No Club Racing			FSC
Wednesday, 10 January 2024					
1800		Twilight Sailing			FSC
Saturday, 13 January 2024					
1345	1	Consistency Series R8		5	FSC
1350	2	Consistency Series R8		5	FSC
1355	6	Consistency Series R8		5	FSC
		Cruising - Quindalup Cruise starts			FSC
Sunday, 14 January 2024					
0900	4	Terry Fisher Series R3		6	FSC
0905	3	Terry Fisher Series R3		6	FSC
0910	2	Terry Fisher Series R3		6	FSC
0915	1	Terry Fisher Series R3		6	FSC
Wednesday 17 January 2024					
1800		Twilight Sailing			FSC
Saturday, 20 January 2024					
0940	2	Pot of Gold Regatta		4	HYC
0955	1	Pot of Gold Regatta		4	HYC
1345	1	Consistency Series R9 / Championship R4		5	FSC
1350	2	Consistency Series R9 / Championship R4		5	FSC
1355	6	Consistency Series R9 / Championship R4		5	FSC
		Cruising - Quindalup Cruise ends			FSC
Sunday, 21 January 2024					
0925		Shepherdess Cup		4	HYC
1300		Cruising J&M			FSC
Wednesday, 24 January 2024					
1800		Twilight Sailing			FSC
Friday, 26 January 2024					
		<i>Public Holiday - Australia Day</i>			
1015	1,2,6	Australia Day Trophy Race	SSIs	5	FSC
		Cruising J&M Course 2			FSC
Saturday, 27 January 2024					
		No Club Racing			FSC
Wednesday, 31 January 2024					
1800		Twilight Sailing			FSC

The times stated for races refers to the 1st warning signal.
Please refer to Schedule of Events online for current information.

TIME	DIVISION	EVENT	SSIs	CAT	OA
Saturday, 03 February 2024					
		Cruising - Garden Island/ Woodmans Point Day Cruise			FSC
1345	1	Consistency Series R10 / Championship R5		5	FSC
1350	2	Consistency Series R10 / Championship R5		5	FSC
1355	6	Consistency Series R10 / Championship R5		5	FSC
		Geographe Bay Race Week			GBYC
Sunday, 04 February 2024					
0900	4	Terry Fisher Series R4		6	FSC
0905	3	Terry Fisher Series R4		6	FSC
0910	2	Terry Fisher Series R4		6	FSC
0915	1	Terry Fisher Series R4		6	FSC
		Geographe Bay Race Week starts			GBYC
Wednesday, 07 February 2024					
1800		Twilight Sailing			FSC
Friday, 09 February 2024					
		Geographe Bay Race Week ends			GBYC
Saturday, 10 February 2024					
1200	1,2,6	Coastal Series R3 - Mike Harvey Memorial Race to Hillarys	SSIs	5	FSC
		Cruising - Mike Harvey Cruise to Hillarys			FSC
Sunday, 11 February 2024					
0900		Hillarys to Fremantle Return Cruise		5	FSC
		Cruising - Mike Harvey Return Cruise to Fremantle			FSC
1300		Cruising J&M			FSC
Wednesday, 14 February 2024					
1800		Twilight Sailing			FSC
Saturday, 17 February 2024					
0855	1,2	Bunbury and Return Ocean Race		3+	RFBYC
1345	1	Consistency Series R11		5	FSC
1350	2	Consistency Series R11		5	FSC
1355	6	Consistency Series R11		5	FSC
Sunday, 18 February 2024					
1300		Cruising J&M			FSC
Wednesday, 21 February 2024					
1800		Twilight Sailing			FSC
Saturday, 24 February 2024					
0855	1,2,6	Coastal Series R4 - Warne Shield Race to Rockingham	SSIs	5	FSC
1430	1,2,6	Coastal Series R5 - Cockburn Cup Return Race (FSC vs TCYC) inc. Ron and Marie Brown Cup Rotto Swim	SSIs	5	FSC

The times stated for races refers to the 1st warning signal.
Please refer to Schedule of Events online for current information.

The *World's Best*
Sailors are coming to
Fremantle

2
Etchells
WORLD CHAMPIONSHIP
FREMANTLE 2024

01

SWAN RIVER FLEET STATE CHAMPIONSHIP

Saturday, 17 and Sunday, 18 February 2024

Venue: Royal Perth Yacht Club Fremantle Annexe

02

BILL STEELE REGATTA

Monday, 11 to Wednesday, 13 March 2024

Venue: Fremantle Sailing Club

03

2024 ETHELLS WORLD CHAMPIONSHIP

Saturday, 16 to Friday, 22 March 2024

Venue: Fremantle Sailing Club



HOST VENUE

Fremantle Sailing Club



ORGANISING AUTHORITY

Royal Freshwater Bay Yacht Club



SUPPORTING CLUB

Royal Perth Yacht Club



<https://www.etchellsworldsfremantle.com/>

TIME	DIVISION	EVENT	SSIs	CAT	OA
Wednesday 28 February 2024					
1800		Twilight Sailing			FSC
Saturday 02 March 2024					
		No Club Racing			FSC
		Keelboat State Championships			RPYC
Sunday, 03 March 2024					
		Keelboat State Championships			RPYC
Monday, 04 March 2024					
		<i>Public Holiday - Labour Day</i>			
		Keelboat State Championships			RPYC
Wednesday, 06 March 2024					
1800		Twilight Sailing			FSC
Saturday, 09 March 2024					
0900	2	Captain Stirling Cup R3 - Halls Head Race Fremantle to Mandurah	SSIs	4	FSC
0905	1	Captain Stirling Cup R3 - Halls Head Race Fremantle to Mandurah	SSIs	4	FSC
		Cruising - Mandurah Cruise			FSC
Sunday, 10 March 2024					
0900	2	Captain Stirling Cup R4 - Point Robert Return Race	SSIs	4	FSC
0905	1	Captain Stirling Cup R4 - Point Robert Return Race	SSIs	4	FSC
		Cruising - Mandurah Return Cruise			FSC
		Etchells Bill Steele Regatta (Pre-Worlds) at FSC - Registration			
1300		Cruising J&M			FSC
Monday, 11 March 2024					
		Etchells Bill Steele Regatta (Pre-Worlds) at FSC - Racing			RFBYC
Tuesday, 12 March 2024					
		Etchells Bill Steele Regatta (Pre-Worlds) at FSC - Racing			RFBYC
Wednesday, 13 March 2024					
		Etchells Bill Steele Regatta (Pre-Worlds) at FSC - Racing FINAL			RFBYC
1800		Twilight Sailing			FSC
Friday, 15 March 2024					
		Etchells World Championship - Registration, Measurement & Weigh-In			RFBYC
Saturday, 16 March 2024					
		Etchells World Championship - Registration, Measurement & Weigh-In			RFBYC
1345	1	Consistency Series R12		5	FSC
1350	2	Consistency Series R12		5	FSC
1355	6	Consistency Series R12		5	FSC
		Cruising - Rotto Weekend			FSC

The times stated for races refers to the 1st warning signal.
Please refer to Schedule of Events online for current information.

TIME	DIVISION	EVENT	SSIs	CAT	OA
Sunday, 17 March 2024					
		Etchells World Championship - Registration, Measurement & Weigh-In			RFBYC
		Etchells World Championship - Practice Race			RFBYC
0900	4	Terry Fisher Series R5	6		FSC
0905	3	Terry Fisher Series R5	6		FSC
0910	2	Terry Fisher Series R5	6		FSC
0915	1	Terry Fisher Series R5	6		FSC
		Cruising - Rotto Weekend			FSC
Monday, 18 March 2024					
		Etchells World Championship - Racing			RFBYC
Tuesday, 19 March 2024					
		Etchells World Championship - Racing			RFBYC
Wednesday 20 March 2024					
		Etchells World Championship - Racing			RFBYC
1800		Twilight Sailing			FSC
Thursday, 21 March 2024					
		Etchells World Championship - Racing			RFBYC
Friday, 22 March 2024					
1755	1,2	Success Cup R4 - Cape Naturaliste and Return Race	3+		RPYC
		Etchells World Championship - Racing FINAL			RFBYC
Saturday, 23 March 2024					
1345	1	Consistency Series R13 / Championship R6	5		FSC
1350	2	Consistency Series R13 / Championship R6	5		FSC
1355	6	Consistency Series R13 / Championship R6	5		FSC
1800		Cruising - Progressive Dinner			FSC
Sunday, 24 March 2024					
		Cock of the Rock			FSC
Wednesday, 27 March 2024					
1800		Twilight Sailing			FSC
Friday, 29 March 2024					
		<i>Public Holiday - Good Friday</i>			
Saturday, 30 March 2024					
		No Club Racing			FSC
Sunday, 31 March 2024					
		<i>Public Holiday - Easter Sunday</i>			
Monday, 01 April 2024					
		<i>Public Holiday - Easter Monday</i>			

The times stated for races refers to the 1st warning signal.
Please refer to Schedule of Events online for current information.

TIME	DIVISION	EVENT	SSIs	CAT	OA
Tuesday, 02 April 2024					
		Cruising - Cruise to Abrolhos Islands starts			FSC
Wednesday, 03 April 2024					
1730		Twilight Sailing			FSC
Saturday, 06 April 2024					
0900	2	Island Race	4		RPYC
0905	1	Island Race	4		RPYC
1345	1	Consistency Series R14	5		FSC
1350	2	Consistency Series R14	5		FSC
1355	6	Consistency Series R14	5		FSC
Sunday, 07 April 2024					
1300		Cruising J&M			FSC
TBA		Harbour Race			FSC
Tuesday, 09 April 2024					
		Cruising - Cruise to Abrolhos Islands ends			FSC
Wednesday, 10 April 2024					
1730		Twilight Sailing			FSC
Saturday, 13 April 2024					
1345	1	Consistency Series R15 / Championship R7 FINAL / Max Shean Trophy	5		FSC
1350	2	Consistency Series R15 / Championship R7 FINAL / Max Shean Trophy	5		FSC
1355	6	Consistency Series R15 / Championship R7 FINAL / Max Shean Trophy	5		FSC
Sunday, 14 April 2024					
0900	4	Terry Fisher Series R6 FINAL - After race party at Sunset Deck	6		FSC
0905	3	Terry Fisher Series R6 FINAL - After race party at Sunset Deck	6		FSC
0910	2	Terry Fisher Series R6 FINAL - After race party at Sunset Deck	6		FSC
0915	1	Terry Fisher Series R6 FINAL - After race party at Sunset Deck	6		FSC
Wednesday, 17 April 2024					
1730		Twilight Sailing			FSC
Saturday, 20 April 2024					
0900	2	Roland Smith Ocean Race	4		RFBYC
0905	1	Roland Smith Ocean Race	4		RFBYC
1345	1	Consistency Series R16 FINAL	5		FSC
1350	2	Consistency Series R16 FINAL	5		FSC
1355	6	Consistency Series R16 FINAL	5		FSC
Sunday, 21 April 2024					
1300		Cruising J&M			FSC
Wednesday, 24 April 2024					
1730		Twilight Sailing FINAL			FSC

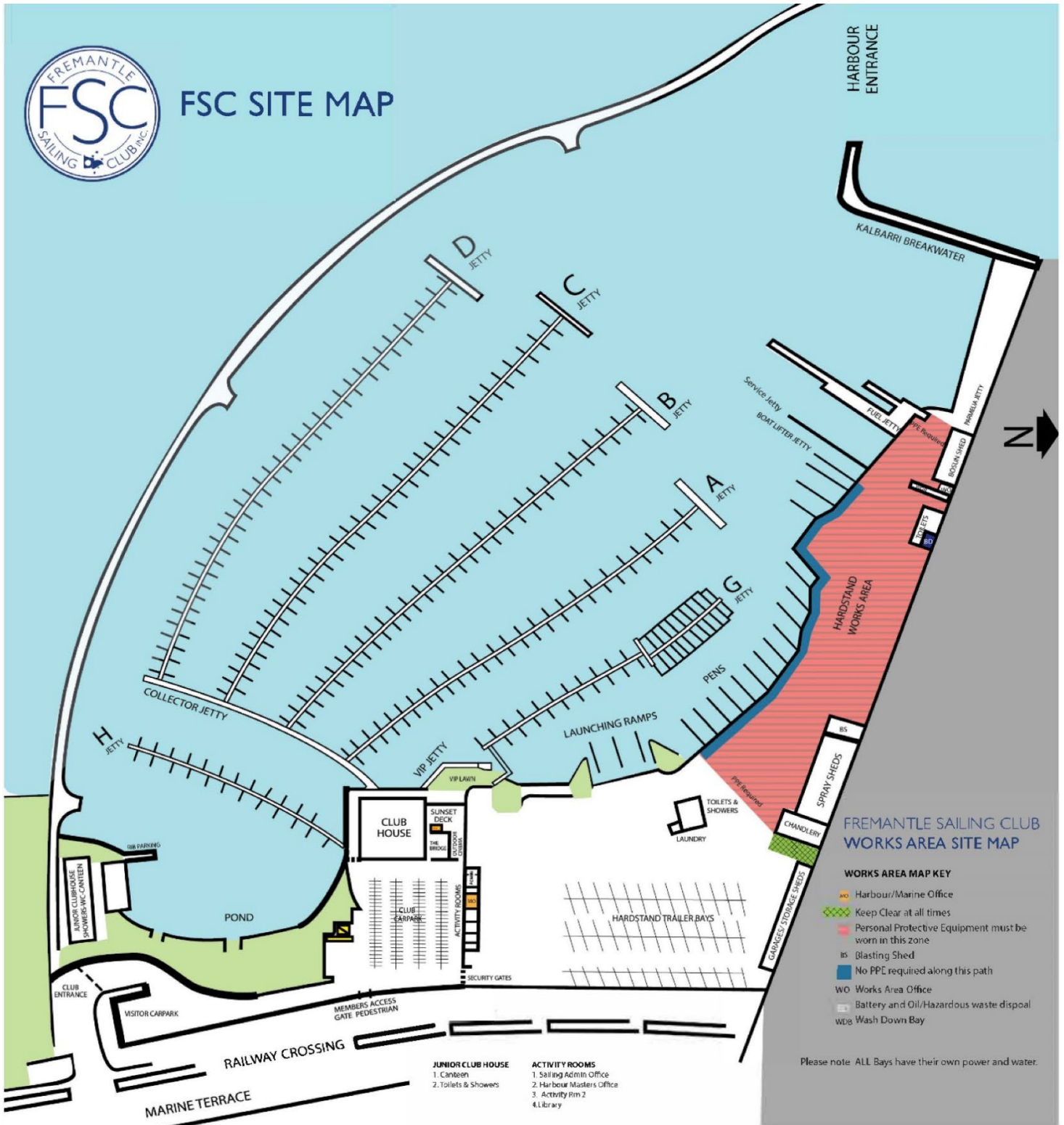
The times stated for races refers to the 1st warning signal.
Please refer to Schedule of Events online for current information.

TIME	DIVISION	EVENT	SSIs	CAT	OA
Thursday, 25 April 2024					
<i>Public Holiday - Anzac Day</i>					
1300	1,2,6	Anzac Day Cup Race	SSIs	5	FSC
		Cruising J&M			FSC
Saturday, 27 April 2024					
1300	1	Crew Helm Race	SSIs	5	FSC
1305	2	Crew Helm Race	SSIs	5	FSC
1310	6	Crew Helm Race	SSIs	5	FSC
Saturday 04 May 2024					
0920	6	Coastal Series R6 FINAL - Gage Roads Race	SSIs	5	FSC
0930	2	Captain Stirling Cup R5 / Coastal Series R6 FINAL - Gage Roads Race	SSIs	5	FSC
0935	1	Captain Stirling Cup R5 / Coastal Series R6 FINAL - Gage Roads Race	SSIs	5	FSC
Saturday, 11 May 2024					
		Keelboat Presentation Night			FSC
Sunday, 12 May 2024					
<i>Mother's Day</i>					
Sunday, 19 May 2024					
1300		Cruising J&M			FSC
Saturday, 25 May 2024					
		Ocean Racing WA Annual Awards			ORWA
Sunday, 26 May 2024					
1300		Cruising J&M			FSC
Monday, 03 June 2024					
<i>Public Holiday - Western Australia Day</i>					
Saturday, 08 June 2024					
0920	1	Keelboat Winter Series / Valmadre Series R1 / Arlene Race		5	FSC
0925	2	Keelboat Winter Series / Valmadre Series R1 / Arlene Race		5	FSC
0930	6	Keelboat Winter Series / Valmadre Series R1 / Arlene Race		5	FSC
1700		Cruising - Wind & Waves			FSC
Saturday, 15 June 2024					
1300	1	Keelboat Winter Series / Performance Series R1		5	FSC
1305	2	Keelboat Winter Series / Performance Series R1		5	FSC
1310	6	Keelboat Winter Series / Performance Series R1		5	FSC
		Australian Women's Keelboat Regatta		6	RMYS
Sunday, 16 June 2024					
1300		Cruising J&M			FSC
Saturday, 22 June 2024					
		Cruising - Fremantle to Mindarie Cruise			FSC

The times stated for races refers to the 1st warning signal.
Please refer to Schedule of Events online for current information.

TIME	DIVISION	EVENT	SSIs	CAT	OA
Sunday, 23 June 2024					
		Cruising - Mindarie to Fremantle Cruise			FSC
Saturday, 29 June 2024					
1300	1	Keelboat Winter Series / Performance Series R2	5		FSC
1305	2	Keelboat Winter Series / Performance Series R2	5		FSC
1310	6	Keelboat Winter Series / Performance Series R2	5		FSC
Saturday, 06 July 2024					
0920	1	Keelboat Winter Series / Valmadre Series R2 / Ensign Race	5		FSC
0925	2	Keelboat Winter Series / Valmadre Series R2 / Ensign Race	5		FSC
0930	6	Keelboat Winter Series / Valmadre Series R2 / Ensign Race	5		FSC
Saturday, 13 July 2024					
1300	1	Keelboat Winter Series / Performance Series R3	5		FSC
1305	2	Keelboat Winter Series / Performance Series R3	5		FSC
1310	6	Keelboat Winter Series / Performance Series R3	5		FSC
Sunday, 14 July 2024					
1300		Cruising J&M			FSC
Saturday, 27 July 2024					
0920	1	Keelboat Winter Series / Valmadre Series R3 / Mayflower Race	5		FSC
0925	2	Keelboat Winter Series / Valmadre Series R3 / Mayflower Race	5		FSC
0930	6	Keelboat Winter Series / Valmadre Series R3 / Mayflower Race	5		FSC
Saturday, 03 August 2024					
1300	1	Keelboat Winter Series / Performance Series R4 FINAL	5		FSC
1305	2	Keelboat Winter Series / Performance Series R4 FINAL	5		FSC
1310	6	Keelboat Winter Series / Performance Series R4 FINAL	5		FSC
Saturday, 10 August 2024					
0920	1	Keelboat Winter Series / Valmadre Series R4 / Volodora Race FINAL	5		FSC
0925	2	Keelboat Winter Series / Valmadre Series R4 / Volodora Race FINAL	5		FSC
0930	6	Keelboat Winter Series / Valmadre Series R4 / Volodora Race FINAL	5		FSC
Saturday, 17 August 2024					
		Hamilton Island Race Week - 17th to 24th August			HIYC
Sunday, 01 September 2024					
		<i>Father's Day</i>			
Saturday, 21 September 2024					
	2	Foundation Race / George Law Memorial Trophy	SSIs		FSC
	1	Foundation Race / George Law Memorial Trophy	SSIs		FSC
Monday, 23 September 2024					
		<i>Public Holiday - King's Birthday</i>			
Saturday, 05 October 2024					
		Opening Day Sail Past, Race & J&M Cruise	SSIs	5	FSC

The times stated for races refers to the 1st warning signal.
Please refer to Schedule of Events online for current information.



SERVICES AND FACILITIES

- Casual berthing for up to 3 months
- Short or long term berths
- Weddings and functions
- Sailing and water activities
- Secure facilities
- Direct ocean access
- 150m collector jetty
- Private Club launch ramps
- 24/7 shower and ablution block

- 24/7 laundry facilities
- Works hardstand
- Boat lifter
- Spray sheds
- Service jetty
- Fuelling jetty
- Sullage pump-out facilities
- Chandlery store
- Marina trolley's
- Restaurant with takeaway facilities

- Bar with takeaway facilities
- Disabled access
- Wifi access
- Free car parking
- Library

In an emergency please call emergency services on 000, the Water Police on 9442 8600, or the Fremantle Sea Rescue on VHF73 or call their tower on 9335 1332.



RAMP

RACING AND MENTORSHIP PROGRAM



FSC Women's Racing and Mentorship Program (RAMP) is a working group focused on creating sailing and social opportunities for female members at Fremantle Sailing Club. RAMP works to engage women who have completed a learn to sail course, or who are currently active sailors and looking to expand their sailing skills. Register your interest and join us for social, development and on water racing events.

WE LOOK FORWARD TO SEEING YOU SOON!



This program is for FSC members who have completed a Learn to Sail course or have sailing experience.

REGISTER YOUR INTEREST

Visit: surveymonkey.com/r/38LT6NT

Email: ramp@fsc.com.au



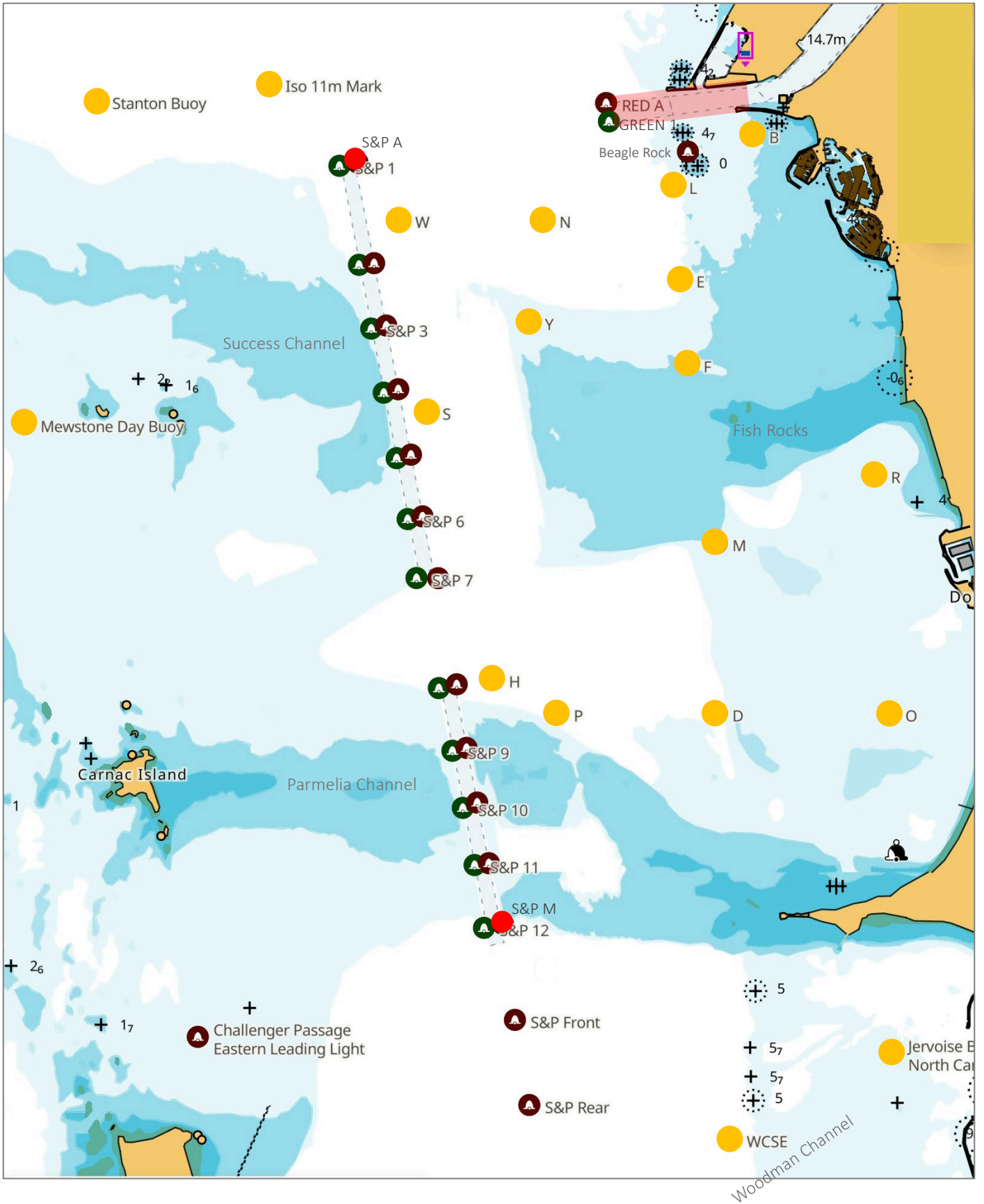
@fscramp

@fscramp

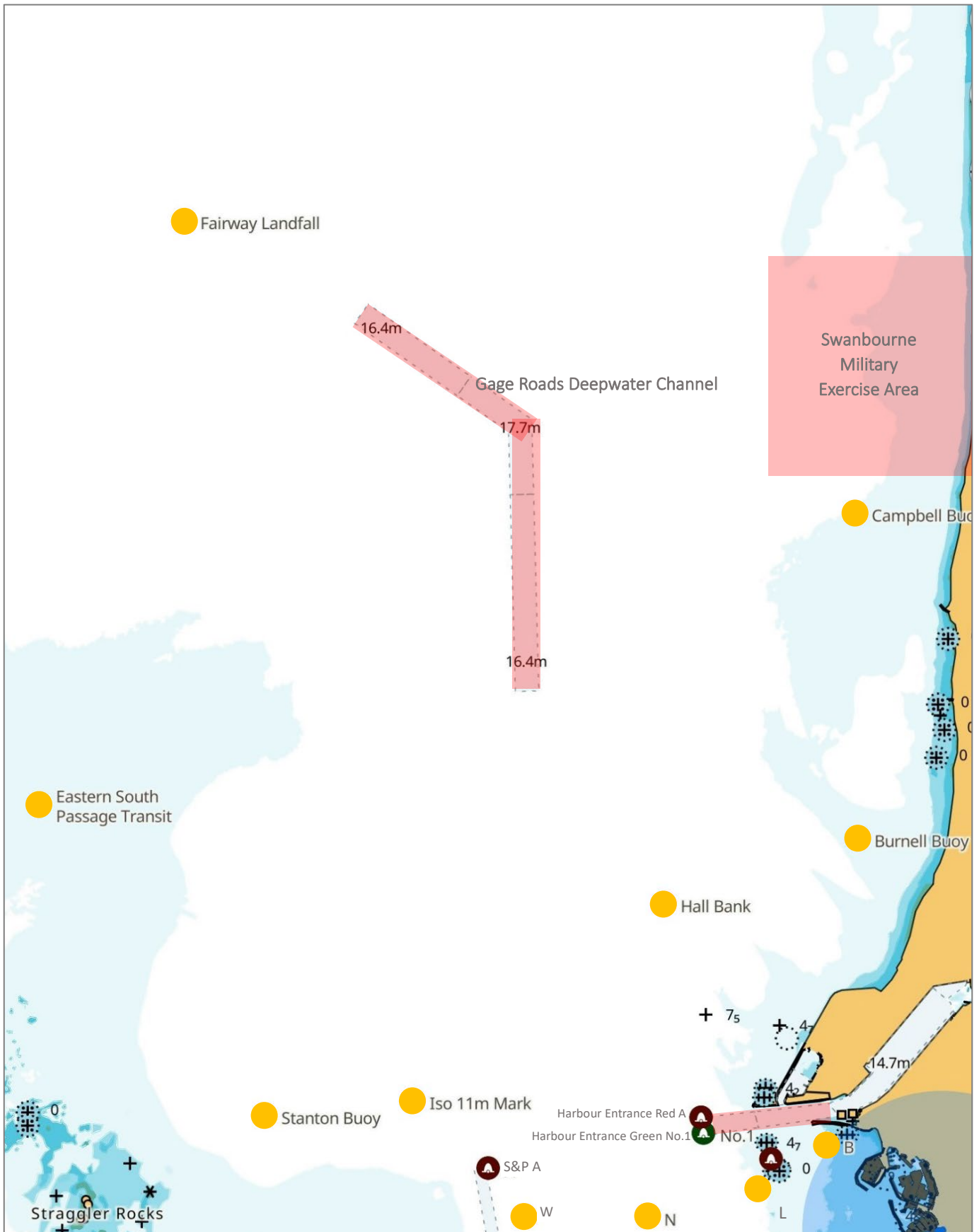


<https://fsc.com.au/women-on-water/>

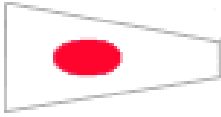
Not to be used for navigation.



Not to be used for navigation.



Course 1



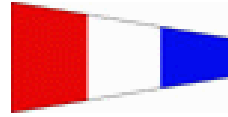
Numeral Pennant 1

Course 2



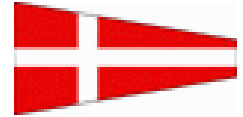
Numeral Pennant 2

Course 3



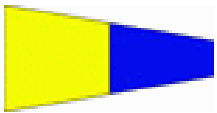
Numeral Pennant 3

Course 4



Numeral Pennant 4

Course 5



Numeral Pennant 5

Course 6



Numeral Pennant 6

Course 7



Numeral Pennant 7

Course 8



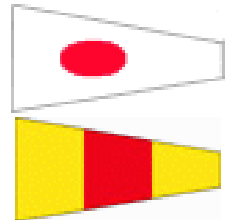
Numeral Pennant 8

Course 9



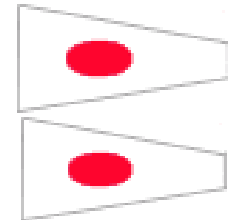
Numeral Pennant 9

Course 10



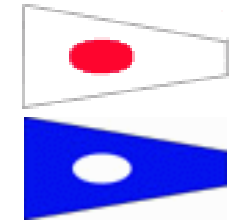
Numeral Pennants 1 & 0

Course 11



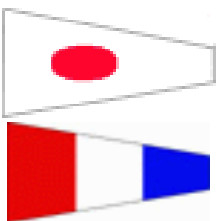
Numeral Pennants 1 & 1

Course 12



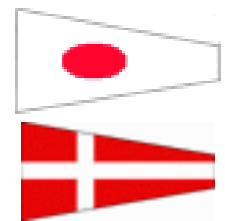
Numeral Pennants 1 & 2

Course 13



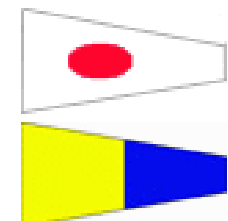
Numeral Pennants 1 & 3

Course 14



Numeral Pennants 1 & 4

Course 15



Numeral Pennants 1 & 5

COURSE 1	<i>approx. 13.2Nm</i>
MARKS	REQUIRED SIDE
Start at Mark L	
Mark S*	<i>Port</i>
Mark H	<i>Port</i>
Mark R	<i>Starboard</i>
Mark P*	<i>Starboard</i>
Mark S*	<i>Starboard</i>
Mark W	<i>Starboard</i>
Finish at Mark L	

COURSE 3L	<i>approx. 8.7Nm</i>
MARKS	REQUIRED SIDE
Start at Mark Y	
Mark S*	<i>Starboard</i>
Mark W	<i>Starboard</i>
Mark B	<i>Starboard</i>
Mark E*	<i>Starboard</i>
Mark S*	<i>Starboard</i>
Mark N*	<i>Starboard</i>
Finish at Mark Y	

COURSE 4	<i>approx. 15.1Nm</i>
MARKS	REQUIRED SIDE
Start at Mark L	
Mark F*	<i>Starboard</i>
Mark W	<i>Port</i>
Mark H*	<i>Port</i>
Mark O	<i>Port</i>
Mark S*	<i>Starboard</i>
Mark W	<i>Starboard</i>
Mark L*	<i>Starboard</i>
Finish at Mark F	

COURSE 5	<i>approx. 15.7Nm</i>
MARKS	REQUIRED SIDE
Start at Mark F	
Mark W	<i>Port</i>
Mark S*	<i>Port</i>
Mark O	<i>Port</i>
Mark M	<i>Port</i>
Mark H*	<i>Starboard</i>
Mark S*	<i>Starboard</i>
Mark W*	<i>Starboard</i>
Mark L	<i>Starboard</i>
Mark F*	<i>Starboard</i>
Finish at Mark Y	

COURSE 6	<i>approx. 13.5Nm</i>
MARKS	REQUIRED SIDE
Start at Mark Y	
Mark B*	<i>Port</i>
Mark W	<i>Port</i>
Mark S*	<i>Port</i>
Mark H*	<i>Port</i>
Mark M	<i>Starboard</i>
Mark P	<i>Starboard</i>
Mark S*	<i>Starboard</i>
Finish at Mark L	

COURSE 7	<i>approx. 12.8Nm</i>
MARKS	REQUIRED SIDE
Start at Mark E	
Mark S*	<i>Port</i>
Mark P*	<i>Port</i>
Mark O	<i>Port</i>
Mark R	<i>Port</i>
Mark H	<i>Starboard</i>
Mark S*	<i>Starboard</i>
Finish at Mark E	

COURSE 8	<i>approx. 14.8Nm</i>
MARKS	REQUIRED SIDE
Start at Mark Y	
Mark S	<i>Starboard</i>
Mark W	<i>Starboard</i>
Mark L	<i>Starboard</i>
Mark S	<i>Port</i>
Mark H*	<i>Port</i>
Mark R*	<i>Starboard</i>
Mark P	<i>Starboard</i>
Mark S*	<i>Starboard</i>
Finish at Mark Y	

COURSE 9	<i>approx. 11.6Nm</i>
MARKS	REQUIRED SIDE
Start at Mark N	
Mark F*	<i>Port</i>
Mark L*	<i>Port</i>
Mark W	<i>Port</i>
Mark F*	<i>Port</i>
Mark L*	<i>Port</i>
Mark W	<i>Port</i>
Mark F*	<i>Port</i>
Finish at Mark N	

COURSE 10L	<i>approx. 10.4Nm</i>
MARKS	REQUIRED SIDE
Start at Mark F	
Mark W	<i>Starboard</i>
Mark B	<i>Starboard</i>
Mark F*	<i>Starboard</i>
Mark N	<i>Starboard</i>
Mark B*	<i>Starboard</i>
Mark F*	<i>Starboard</i>
Finish at Mark Y	

COURSE 12L	<i>approx. 10.9Nm</i>
MARKS	REQUIRED SIDE
Start at Mark L	
Mark B*	<i>Starboard</i>
Mark F*	<i>Starboard</i>
Mark W	<i>Starboard</i>
Mark B*	<i>Starboard</i>
Mark F*	<i>Starboard</i>
Mark W	<i>Starboard</i>
Finish at Mark L	

COURSE 13L	<i>approx. 10.9Nm</i>
MARKS	REQUIRED SIDE
Start at Mark Y	
Mark F*	<i>Port</i>
Mark B	<i>Port</i>
Mark W	<i>Port</i>
Mark F*	<i>Port</i>
Mark B	<i>Port</i>
Mark W*	<i>Port</i>
Finish at Mark Y	

COURSE 14L	<i>approx. 10.5Nm</i>
MARKS	REQUIRED SIDE
Start at Mark E	
Mark W*	<i>Port</i>
Mark S*	<i>Port</i>
Mark Y*	<i>Starboard</i>
Mark F*	<i>Port</i>
Mark B	<i>Port</i>
Mark W	<i>Port</i>
Mark F*	<i>Port</i>
Finish at Mark E	

COURSE 15	<i>approx. 10Nm</i>
MARKS	REQUIRED SIDE
Start at Mark Y	
Mark E*	<i>Port</i>
Mark B	<i>Starboard</i>
Mark F*	<i>Starboard</i>
Mark W	<i>Starboard</i>
Mark N*	<i>Starboard</i>
Mark B	<i>Starboard</i>
Mark F*	<i>Starboard</i>
Finish at Mark Y	

* Denotes common shortening mark for all Divisions

'L' Denotes light wind course for winds <10 knots

See Heavy Weather Course Supplement for Course 16

ADDENDUM E **SOUTHERN COURSES – DIVISION 2**

COURSE 1 approx. 10.6Nm	
MARKS	REQUIRED SIDE
Start at Mark L	
Mark S*	<i>Port</i>
Mark H	<i>Port</i>
Mark M	<i>Starboard</i>
Mark P*	<i>Starboard</i>
Mark S*	<i>Starboard</i>
Mark N	<i>Starboard</i>
Finish at Mark L	

COURSE 3L approx. 8Nm	
MARKS	REQUIRED SIDE
Start at Mark Y	
Mark S*	<i>Starboard</i>
Mark N	<i>Starboard</i>
Mark B	<i>Starboard</i>
Mark E*	<i>Starboard</i>
Mark S*	<i>Starboard</i>
Mark N*	<i>Starboard</i>
Finish at Mark Y	

COURSE 4 approx. 11.3Nm	
MARKS	REQUIRED SIDE
Start at Mark L	
Mark F*	<i>Starboard</i>
Mark W	<i>Port</i>
Mark H*	<i>Port</i>
Mark P	<i>Port</i>
Mark S*	<i>Starboard</i>
Mark N	<i>Starboard</i>
Mark L	<i>Starboard</i>
Finish at Mark F	

COURSE 5 approx. 11.9Nm	
MARKS	REQUIRED SIDE
Start at Mark F	
Mark N	<i>Port</i>
Mark S*	<i>Port</i>
Mark D	<i>Starboard</i>
Mark H*	<i>Starboard</i>
Mark S*	<i>Starboard</i>
Mark W*	<i>Starboard</i>
Mark F*	<i>Starboard</i>
Finish at Mark Y	

COURSE 6 approx. 10.2Nm	
MARKS	REQUIRED SIDE
Start at Mark Y	
Mark B*	<i>Port</i>
Mark W	<i>Port</i>
Mark S*	<i>Port</i>
Mark H*	<i>Port</i>
Mark S*	<i>Starboard</i>
Finish at Mark L	

COURSE 7 approx. 10.3Nm	
MARKS	REQUIRED SIDE
Start at Mark E	
Mark S*	<i>Port</i>
Mark P*	<i>Port</i>
Mark D	<i>Port</i>
Mark M	<i>Port</i>
Mark H	<i>Starboard</i>
Mark S*	<i>Starboard</i>
Finish at Mark E	

COURSE 8 approx. 12.3Nm	
MARKS	REQUIRED SIDE
Start at Mark Y	
Mark H	<i>Port</i>
Mark R	<i>Starboard</i>
Mark P	<i>Starboard</i>
Mark M	<i>Port</i>
Mark H	<i>Starboard</i>
Mark S	<i>Starboard</i>
Finish at Mark Y	

COURSE 9 approx. 10.2Nm	
MARKS	REQUIRED SIDE
Start at Mark N	
Mark F*	<i>Port</i>
Mark L*	<i>Port</i>
Mark W	<i>Port</i>
Mark F*	<i>Port</i>
Mark L*	<i>Port</i>
Mark Y	<i>Port</i>
Mark F*	<i>Port</i>
Finish at Mark N	

COURSE 10L approx. 8Nm	
MARKS	REQUIRED SIDE
Start at Mark F	
Mark N	<i>Starboard</i>
Mark L	<i>Starboard</i>
Mark F*	<i>Starboard</i>
Mark N	<i>Starboard</i>
Mark B*	<i>Starboard</i>
Mark F*	<i>Starboard</i>
Finish at Mark Y	

COURSE 12L approx. 7.9Nm	
MARKS	REQUIRED SIDE
Start at Mark L	
Mark B*	<i>Starboard</i>
Mark F*	<i>Starboard</i>
Mark N	<i>Starboard</i>
Mark B*	<i>Starboard</i>
Mark F*	<i>Starboard</i>
Mark N	<i>Starboard</i>
Finish at Mark L	

COURSE 13L approx. 8.6Nm	
MARKS	REQUIRED SIDE
Start at Mark Y	
Mark F*	<i>Port</i>
Mark B	<i>Port</i>
Mark N	<i>Port</i>
Mark F*	<i>Port</i>
Mark L	<i>Port</i>
Mark W*	<i>Port</i>
Finish at Mark Y	

COURSE 14L approx. 8.8Nm	
MARKS	REQUIRED SIDE
Start at Mark E	
Mark W*	<i>Port</i>
Mark S*	<i>Port</i>
Mark Y*	<i>Starboard</i>
Mark F*	<i>Port</i>
Mark W	<i>Port</i>
Mark F*	<i>Port</i>
Finish at Mark E	

COURSE 15 approx. 8.2Nm	
MARKS	REQUIRED SIDE
Start at Mark Y	
Mark E*	<i>Port</i>
Mark B	<i>Starboard</i>
Mark F*	<i>Starboard</i>
Mark N*	<i>Starboard</i>
Mark B	<i>Starboard</i>
Mark F*	<i>Starboard</i>
Finish at Mark Y	

* Denotes common shortening mark for all Divisions
 'L' Denotes light wind course for winds <10 knots

See Heavy Weather Course Supplement for Course 16

ADDENDUM E **SOUTHERN COURSES – DIVISION 6**

COURSE 1 approx. 8.6Nm	
MARKS	REQUIRED SIDE
Start at Mark L	
Mark S*	<i>Port</i>
Mark P*	<i>Starboard</i>
Mark S*	<i>Starboard</i>
Mark W*	<i>Starboard</i>
Finish at Mark L	

COURSE 3L approx. 7.1Nm	
MARKS	REQUIRED SIDE
Start at Mark Y	
Mark S*	<i>Starboard</i>
Mark N	<i>Starboard</i>
Mark L	<i>Starboard</i>
Mark E*	<i>Starboard</i>
Mark S*	<i>Starboard</i>
Mark N*	<i>Starboard</i>
Finish at Mark Y	

COURSE 4 approx. 8.9Nm	
MARKS	REQUIRED SIDE
Start at Mark L	
Mark F*	<i>Starboard</i>
Mark Y	<i>Port</i>
Mark H*	<i>Port</i>
Mark S*	<i>Starboard</i>
Mark N	<i>Starboard</i>
Mark L*	<i>Starboard</i>
Finish at Mark F	

COURSE 5 approx. 10.5Nm	
MARKS	REQUIRED SIDE
Start at Mark F	
Mark N	<i>Port</i>
Mark S*	<i>Port</i>
Mark P	<i>Starboard</i>
Mark H*	<i>Starboard</i>
Mark S*	<i>Starboard</i>
Mark W*	<i>Starboard</i>
Mark F*	<i>Starboard</i>
Finish at Mark Y	

COURSE 6 approx. 9.6Nm	
MARKS	REQUIRED SIDE
Start at Mark Y	
Mark B*	<i>Port</i>
Mark N	<i>Port</i>
Mark S*	<i>Port</i>
Mark H*	<i>Port</i>
Mark S*	<i>Starboard</i>
Finish at Mark L	

COURSE 7 approx. 4.2Nm	
MARKS	REQUIRED SIDE
Start at Mark E	
Mark S*	<i>Port</i>
Mark P*	<i>Port</i>
Mark D	<i>Port</i>
Mark S*	<i>Starboard</i>
Finish at Mark E	

COURSE 8 approx. 10.1Nm	
MARKS	REQUIRED SIDE
Start at Mark Y	
Mark H*	<i>Port</i>
Mark R*	<i>Starboard</i>
Mark O	<i>Starboard</i>
Mark S*	<i>Starboard</i>
Finish at Mark Y	

COURSE 9 approx. 8.8Nm	
MARKS	REQUIRED SIDE
Start at Mark N	
Mark F*	<i>Port</i>
Mark L*	<i>Port</i>
Mark Y	<i>Port</i>
Mark F*	<i>Port</i>
Mark L*	<i>Port</i>
Mark Y	<i>Port</i>
Mark F*	<i>Port</i>
Finish at Mark N	

COURSE 10L approx. 7Nm	
MARKS	REQUIRED SIDE
Start at Mark F	
Mark N	<i>Starboard</i>
Mark L	<i>Starboard</i>
Mark F*	<i>Starboard</i>
Mark L	<i>Starboard</i>
Mark B*	<i>Starboard</i>
Mark F*	<i>Starboard</i>
Finish at Mark Y	

COURSE 12L approx. 6.9Nm	
MARKS	REQUIRED SIDE
Start at Mark L	
Mark B*	<i>Starboard</i>
Mark F*	<i>Starboard</i>
Mark E	<i>Starboard</i>
Mark B*	<i>Starboard</i>
Mark F*	<i>Starboard</i>
Mark N	<i>Starboard</i>
Finish at Mark L	

COURSE 13L approx. 7.7Nm	
MARKS	REQUIRED SIDE
Start at Mark Y	
Mark F*	<i>Port</i>
Mark L	<i>Port</i>
Mark N	<i>Port</i>
Mark F*	<i>Port</i>
Mark L	<i>Port</i>
Mark W*	<i>Port</i>
Finish at Mark Y	

COURSE 14L approx. 7.4Nm	
MARKS	REQUIRED SIDE
Start at Mark E	
Mark W*	<i>Port</i>
Mark S*	<i>Port</i>
Mark Y*	<i>Starboard</i>
Mark F*	<i>Port</i>
Mark N	<i>Port</i>
Mark F*	<i>Port</i>
Finish at Mark E	

COURSE 15 approx. 6.7Nm	
MARKS	REQUIRED SIDE
Start at Mark Y	
Mark E*	<i>Port</i>
Mark L	<i>Starboard</i>
Mark F*	<i>Starboard</i>
Mark N*	<i>Starboard</i>
Mark L	<i>Starboard</i>
Mark F*	<i>Starboard</i>
Finish at Mark Y	

* Denotes common shortening mark for all Divisions
 'L' Denotes light wind course for winds <10 knots
 See Heavy Weather Course Supplement for Course 16

ADDENDUM E **TERRY FISHER COURSES – DIV 1 & 2**

COURSE 1	<i>approx. 19.0 Nm</i>
MARKS	REQUIRED SIDE
Start, vicinity of FSC Mark L	
Mark S	<i>Port</i>
Mark H	<i>Port</i>
Mark R	<i>Starboard</i>
Mark D	<i>Starboard</i>
Mark P	<i>Starboard</i>
Mark O	<i>Port</i>
Mark R	<i>Port</i>
Mark D	<i>Starboard</i>
Mark H	<i>Starboard</i>
Mark S	<i>Starboard</i>
Finish at South Mole	

COURSE 3	<i>approx. 17.0 Nm</i>
MARKS	REQUIRED SIDE
Start, vicinity of FSC Mark L	
S&P A	<i>Port</i>
Mewstone Day Buoy	<i>Port</i>
S&P 9	<i>Starboard</i>
S&P 10	<i>Starboard</i>
CPELL	<i>Port</i>
S&P 12	<i>Port</i>
Mark H	<i>Starboard</i>
Mark S	<i>Starboard</i>
Finish at South Mole	

COURSE 4	<i>approx. 20.1 Nm</i>
MARKS	REQUIRED SIDE
Start, vicinity of FSC Mark L	
Mark S	<i>Port</i>
S&P Rear	<i>Port</i>
WCSE	<i>Port</i>
JBNC	<i>Port</i>
S&P Front	<i>Starboard</i>
Mark H	<i>Starboard</i>
Mark D	<i>Port</i>
Mark S	<i>Starboard</i>
Finish at South Mole	

COURSE 5	<i>approx. 14.0 Nm</i>
MARKS	REQUIRED SIDE
Start, vicinity of FSC Mark L	
S&P A	<i>Port</i>
Mewstone Day Buoy	<i>Starboard</i>
Iso 11m	<i>Starboard</i>
S&P A	<i>Starboard</i>
Mark H	<i>Port</i>
Mark Y	<i>Starboard</i>
Finish at South Mole	

COURSE 6	<i>approx. 16.5 Nm</i>
MARKS	REQUIRED SIDE
Start, vicinity of FSC Mark L	
Mark S	<i>Port</i>
Mark H	<i>Starboard</i>
Mewstone Day Buoy	<i>Starboard</i>
Iso 11m	<i>Starboard</i>
Mark H	<i>Port</i>
Mark Y	<i>Starboard</i>
Finish at South Mole	

COURSE 7	<i>approx. 16.9 Nm</i>
MARKS	REQUIRED SIDE
Start, vicinity of FSC Mark L	
Beagle Rock	<i>Port</i>
Iso 11m	<i>Port</i>
Mewstone Day Buoy	<i>Port</i>
Mark H	<i>Port</i>
Mark O	<i>Port</i>
Mark S	<i>Starboard</i>
Mark W	<i>Starboard</i>
Beagle Rock	<i>Starboard</i>
Finish at South Mole	

ADDENDUM E **TERRY FISHER COURSES – DIV 3 & 4**

COURSE 1	<i>approx. 13.3 Nm</i>
MARKS	REQUIRED SIDE
Start, vicinity of FSC Mark L	
Mark S	<i>Port</i>
Mark H	<i>Port</i>
Mark R	<i>Starboard</i>
Mark D	<i>Starboard</i>
Mark P	<i>Starboard</i>
Mark S	<i>Starboard</i>
Finish at South Mole	

COURSE 3	<i>approx. 14.0 Nm</i>
MARKS	REQUIRED SIDE
Start, vicinity of FSC Mark L	
S&P A	<i>Port</i>
Mewstone Day Buoy	<i>Port</i>
S&P 9	<i>Starboard</i>
S&P 10	<i>Starboard</i>
S&P 12	<i>Port</i>
Mark H	<i>Starboard</i>
Mark S	<i>Starboard</i>
Finish at South Mole	

COURSE 4	<i>approx. 15.2 Nm</i>
MARKS	REQUIRED SIDE
Start, vicinity of FSC Mark L	
Mark S	<i>Port</i>
S&P Rear	<i>Port</i>
WCSE	<i>Port</i>
S&P M	<i>Starboard</i>
Mark S	<i>Starboard</i>
Finish at South Mole	

COURSE 5	<i>approx. 11.0 Nm</i>
MARKS	REQUIRED SIDE
Start, vicinity of FSC Mark L	
S&P A	<i>Port</i>
Mewstone Day Buoy	<i>Starboard</i>
Iso 11m	<i>Starboard</i>
S&P A	<i>Starboard</i>
Mark S	<i>Port</i>
Mark Y	<i>Starboard</i>
Finish at South Mole	

COURSE 6	<i>approx. 16.5 Nm</i>
MARKS	REQUIRED SIDE
Start, vicinity of FSC Mark L	
Mark S	<i>Port</i>
Mark H	<i>Starboard</i>
Mewstone Day Buoy	<i>Starboard</i>
Iso 11m	<i>Starboard</i>
Mark L	<i>Starboard</i>
Finish at South Mole	

COURSE 7	<i>approx. 13.0 Nm</i>
MARKS	REQUIRED SIDE
Start, vicinity of FSC Mark L	
Beagle Rock	<i>Port</i>
Iso 11m	<i>Port</i>
Mewstone Day Buoy	<i>Port</i>
Mark H	<i>Port</i>
Mark S	<i>Starboard</i>
Mark W	<i>Starboard</i>
Beagle Rock	<i>Starboard</i>
Finish at South Mole	

ADDENDUM E **NORTHERN COURSES – DIVISION 1**

COURSE 1	EAST OR WEST
MARKS	REQUIRED SIDE
Start, vicinity of FSC Mark N	
Day Buoy	
Stanton Buoy	<i>Starboard</i>
Burnell Buoy	<i>Port</i>
Campbell Buoy	<i>Port</i>
Hall Bank	<i>Starboard</i>
*ESPT	<i>Starboard</i>
Hall Bank ^	<i>Starboard</i>
Harbour Entrance Red A	<i>Port</i>
Harbour Entrance Green 1	<i>Port</i>
South Mole Finish	
Approx. 26.5Nm	

COURSE 3	NORTH OR SOUTH
MARKS	REQUIRED SIDE
Start, vicinity of FSC Mark N	
Day Buoy	
Stanton Buoy	<i>Starboard</i>
Fairway Landfall Buoy	<i>Starboard</i>
Iso 11m Mark	<i>Port</i>
Burnell Buoy	<i>Port</i>
Campbell Buoy ^	<i>Port</i>
Harbour Entrance Red A	<i>Port</i>
Harbour Entrance Green 1	<i>Port</i>
South Mole Finish	
Approx. 27Nm	

COURSE 5	HEAVY WEATHER
MARKS	REQUIRED SIDE
South Mole Start	
Iso 11m Mark	<i>Starboard</i>
Burnell Buoy	<i>Port</i>
Campbell Buoy	<i>Port</i>
Stanton Buoy ^	<i>Port</i>
Harbour Entrance Red A	<i>Port</i>
Harbour Entrance Green 1	<i>Port</i>
South Mole Finish	
Approx. 18.5Nm	

COURSE 2 NORTH WEST OR SOUTH EAST	MARKS	REQUIRED SIDE
	Start, vicinity of FSC Mark N	
	Day Buoy	
	Fairway Landfall Buoy	<i>Starboard</i>
	Hall Bank	<i>Starboard</i>
	Stanton Buoy	<i>Starboard</i>
	Burnell Buoy ^	<i>Starboard</i>
	Harbour Entrance Red A	<i>Port</i>
	Harbour Entrance Green 1	<i>Port</i>
	South Mole Finish	
Approx. 24.9 Nm		

COURSE 4 NORTH EAST OR SOUTH WEST	MARKS	REQUIRED SIDE
	Start, vicinity of FSC Mark N	
	Day Buoy	
	Stanton Buoy	<i>Starboard</i>
	Campbell Buoy	<i>Starboard</i>
	Stanton Buoy	<i>Starboard</i>
	Burnell Buoy ^	<i>Starboard</i>
	Harbour Entrance Red A	<i>Port</i>
	Harbour Entrance Green 1	<i>Port</i>
	South Mole Finish	
Approx. 22Nm		

*ESPT = Eastern South Passage Transit Beacon

^ Notify Fremantle Race Control on VHF 72. (Refer SI 18.3)

ADDENDUM E **NORTHERN COURSES – DIVISION 2**

COURSE 1	EAST OR WEST
MARKS	REQUIRED SIDE
Start, vicinity of FSC Mark N	
Day Buoy	
Stanton Buoy	<i>Starboard</i>
Burnell Buoy	<i>Port</i>
Hall Bank Beacon	<i>Starboard</i>
*ESPT ^	<i>Starboard</i>
Harbour Entrance Red A	<i>Port</i>
Harbour Entrance Green 1	<i>Port</i>
South Mole Finish	
	Approx. 18.4Nm

COURSE 3	NORTH OR SOUTH
MARKS	REQUIRED SIDE
Start, vicinity of FSC Mark N	
Day Buoy	
Stanton Buoy	<i>Starboard</i>
ISO 11m Mark	<i>Port</i>
Burnell Buoy	<i>Port</i>
Campbell Buoy ^	<i>Port</i>
Harbour Entrance Red A	<i>Port</i>
Harbour Entrance Green 1	<i>Port</i>
South Mole Finish	
	Approx. 14.5Nm

COURSE 5	HEAVY WEATHER
MARKS	REQUIRED SIDE
South Mole Start	
Iso 11m Mark	<i>Starboard</i>
Hall Bank Beacon ^	<i>Starboard</i>
Harbour Entrance Red A	<i>Port</i>
Harbour Entrance Green 1	<i>Port</i>
South Mole Finish	
	Approx. 8Nm

COURSE 2 NORTH WEST OR SOUTH EAST	MARKS	REQUIRED SIDE
	Start, vicinity of FSC Mark N	
	Day Buoy	
	Fairway Landfall Buoy	<i>Starboard</i>
	Burnell Buoy	<i>Starboard</i>
	Hall Bank Beacon	<i>Starboard</i>
	Burnell Buoy ^	<i>Starboard</i>
	Harbour Entrance Red A	<i>Port</i>
	Harbour Entrance Green 1	<i>Port</i>
	South Mole Finish	
		Approx. 19.4Nm

COURSE 4 NORTH EAST OR SOUTH WEST	MARKS	REQUIRED SIDE
	Start, vicinity of FSC Mark N	
	Day Buoy	
	Stanton Buoy	<i>Starboard</i>
	Burnell Buoy	<i>Starboard</i>
	Stanton Buoy	<i>Starboard</i>
	Burnell Buoy ^	<i>Starboard</i>
	Harbour Entrance Red A	<i>Port</i>
	Harbour Entrance Green 1	<i>Port</i>
	South Mole Finish	
		Approx. 11Nm

*ESPT = Eastern South Passage Transit Beacon

^ Notify Fremantle Race Control on VHF 72. (Refer SI 18.3)

ADDENDUM E **NORTHERN COURSES – DIVISION 6 J&M**

COURSE 1	EAST OR WEST
MARKS	REQUIRED SIDE
Start, vicinity of FSC Mark N	
Day Buoy	
Stanton Buoy	<i>Starboard</i>
Burnell Buoy	<i>Port</i>
Campbell Buoy ^	<i>Port</i>
Harbour Entrance Red A	<i>Port</i>
Harbour Entrance Green 1	<i>Port</i>
South Mole Finish	
	Approx 14.5Nm

COURSE 3	NORTH OR SOUTH
MARKS	REQUIRED SIDE
Start, vicinity of FSC Mark N	
Day Buoy	
Stanton Buoy	<i>Starboard</i>
Hall Bank Beacon	<i>Port</i>
Campbell Buoy ^	<i>Port</i>
Harbour Entrance Red A	<i>Port</i>
Harbour Entrance Green 1	<i>Port</i>
South Mole Finish	
	Approx. 13.5Nm

COURSE 5	HEAVY WEATHER
MARKS	REQUIRED SIDE
South Mole Start	
Iso 11m Mark	<i>Starboard</i>
Hall Bank Beacon ^	<i>Starboard</i>
Harbour Entrance Red A	<i>Port</i>
Harbour Entrance Green 1	<i>Port</i>
South Mole Finish	
	Approx. 8Nm

COURSE 2 NORTH WEST OR SOUTH EAST	REQUIRED SIDE
MARKS	REQUIRED SIDE
Start, vicinity of FSC Mark N	
Day Buoy	
Fairway Buoy	<i>Starboard</i>
Burnell Buoy ^	<i>Starboard</i>
Harbour Entrance Red A	<i>Port</i>
Harbour Entrance Green 1	<i>Port</i>
South Mole Finish	
	Approx 17Nm

COURSE 4 NORTH EAST OR SOUTH WEST	REQUIRED SIDE
MARKS	REQUIRED SIDE
Start, vicinity of FSC Mark N	
Day Buoy	
Stanton Buoy	<i>Starboard</i>
Hall Bank Beacon	<i>Starboard</i>
Stanton Buoy	<i>Starboard</i>
Hall Bank Beacon ^	<i>Starboard</i>
Harbour Entrance Red A	<i>Port</i>
Harbour Entrance Green 1	<i>Port</i>
South Mole Finish	
	Approx. 9.7Nm

^ Notify Fremantle Race Control on VHF 72. (Refer SI 18.3)

1. COMMUNICATION WITH COMPETITORS

The Race Committee will advise the selection of the Heavy Weather Course by posting a Notice to Competitors on the ONB by 1800 the day before. This notice will also be sent via SMS to all skippers.

2. SIGNALS MADE ASHORE

The numeral pennant corresponding to the Heavy Weather Course will be displayed from the main flag mast on the lawn at the western side of the Clubhouse by 1800 the day before the race.

3. DIVISION FLAG

3.1. The Heavy Weather Start Division flag is a white flag.

3.2. Boats shall display their assigned Division flags i.e Div 1,2,3 or 6. Refer Sl. 11 Division Flags

4. SCHEDULE

The start for all Divisions will be at the first scheduled start of the day. Refer **Addendum A** Schedule of Events.

5. THE START

5.1. Races will be started using RRS 26 with the warning signal made 5 minutes before the starting signal.

5.2. Boats shall start in accordance with the following race signals:

Minutes before starting signal	Visual Signal	Sound Signal	Means
10	Orange Flag	One	On Station
5	Division Flag & Numeral Pennant	One	Warning signal
4	Flag P	One	Preparatory Signal
1	Flag P removed	One long	One minute
0	Class Flag & Numeral Pennant removed	One	Starting signal

5.3. A boat that does not start within 20 minutes after her starting signal will be scored Did Not Start (DNS) without a hearing. This changes Sl.17.4, RRS A5.1 and A5.2.

5.4. The time difference between a boat's actual start time and the starting signal will be subtracted from the boat's finishing time to calculate their elapsed time.

5.6. General Recalls

There will be no General Recalls.

5.7. Starting Line

The starting line is between FSC Mark B at the port end and a staff displaying an orange flag ashore at the starboard end, approximately 150m east of South Mole Lighthouse. Boats shall start in a westerly direction. **Refer diagrams on page 9 and SI 17.6 South Mole Start.**

WGS84 Datum DDD MM.MMM

FSC CLUB MARKS

Mark	Latitude	Longitude
B	32° 03.502'S	115° 44.055'E
D	32° 06.900'S	115° 43.800'E
E	32° 04.350'S	115° 43.550'E
F	32° 04.850'S	115° 43.600'E
H	32° 06.700'S	115° 42.250'E
L	32° 03.800'S	115° 43.500'E
M	32° 05.900'S	115° 43.800'E
N	32° 04.000'S	115° 42.600'E
O	32° 06.900'S	115° 45.000'E
P	32° 06.900'S	115° 42.700'E
R	32° 05.500'S	115° 44.900'E
S	32° 05.127'S	115° 41.789'E
W	32° 04.000'S	115° 41.600'E
Y	32° 04.600'S	115° 42.500'E

OTHER MARKS

Mark	Abbrev.	Latitude	Longitude
Beagle Rocks Mark		32° 03.600'S	115° 43.600'E
Burnell Buoy		32° 01.397'S	115° 44.304'E
Campbell Buoy		31° 59.207'S	115° 44.300'E
Challenger Passage Eastern Leading Light	CPELL	32° 08.731'S	115° 40.254'E
Success & Pamela Channel Marker 'A'	S&P A	32° 03.663'S	115° 41.307'E
Success & Pamela Channel Marker No.9	S&P 9	32° 07.120'S	115° 41.966'E
Success & Pamela Channel Marker No.10	S&P 10	32° 07.455'S	115° 42.038'E
Success & Pamela Channel Marker No.12	S&P 12	32° 08.160'S	115° 42.185'E
Eastern South Passage Transit Beacon	ESPT	32° 01.158'S	115° 37.671'E
Fairway Landfall Buoy		31° 57.148'S	115° 38.841'E
Hall Bank Beacon		32° 01.845'S	115° 42.734'E
Fremantle Harbour Entrance Buoy Red 'A'		32° 03.316'S	115° 43.025'E
Fremantle Harbour Entrance Buoy Green No.1		32° 03.443'S	115° 43.044'E
Iso 11m Mark		32° 03.200'S	115° 40.700'E
Jervoise Bay North Cardinal	JBNC	32° 08.907'S	115° 45.020'E
Mewstone Day Buoy		32° 05.200'S	115° 39.000'E
Success & Pamela Front	S&P Front	32° 08.700'S	115° 42.400'E
Success & Pamela Rear	S&P Rear	32° 09.200'S	115° 42.500'E
Stanton Buoy		32° 03.301'S	115° 39.498'E
Woodman Channel Starboard Entrance No.1	WCSE	32° 09.400'S	115° 43.900'E

FSC CLUB MARK DISTANCES

Approximate bearings and distances between marks

FROM	Nm	B	D	E	F	H	L	M	N	O	P	R	S	W	Y
TO	Brg														
B				1	1.4		0.6		1.3					2.2	1.7
				27	17		60		69					77	51
D											0.9	1.7	2.5		
											90	214	136		
E		1			0.5		0.6		0.9				1.7	1.7	0.9
		207			355		176		113				63	102	74
F		1.4		0.5			1.1		1.2					1.9	1
		197		175			175		135					117	105
H			1.3					1.5			0.4	2.6	1.6	2.8	2.1
			279					239			298	242	166	168	186
L		0.6		0.6	1.1				0.8				2	1.6	1.2
		240		356	355				75				48	83	47
M			1			1.5				1.4					
			0			59				315					
N		1.3			1.2		0.8						1.3	0.8	0.6
		249			315		255						31	90	8
O						2.3					1.9		3.3		
						95					90		123		
P			0.9			0.4		1.4				2.3	1.9		
			270			118		223				233	156		
R						2.6			1.4		2.3				
						62			357		53				
S		2.5	2.5	1.7		1.6	2		1.3	3.3	1.9			1.1	0.8
		230	316	244		346	228		211	303	336			172	229
W		2.2		1.7	1.9		1.6						1.1		1
		257		282	297		263						352		308
Y				0.9	1	2.1	1.2		0.6				0.8	1	
				254	284	6	227		188				49	128	

The following areas are designated as obstructions:

Swanbourne Military Exercise Area

While racing, boats shall not enter an area bounded by a line joining Swanbourne exclusion zone buoy (NW) and Swanbourne exclusion zone buoy (SW) and lines to the shore due east of these points.

SW Buoy 31° 58.875'S 115° 43.345'E

NW Buoy 31° 56.545'S 115° 43.346'E

Gage Roads Deepwater Channel

While racing, boats shall not enter an area bounded by a line joining the following points:

Northern Entrance 31° 58.553'S 115° 41.668'E & 31° 57.731'S 115° 40.337'E

Central Corners 31° 58.553'S 115° 41.668'E & 31° 58.602'S 115° 41.474'E

Southern Entrance 32° 00.392'S 115° 41.698'E & 32° 00.384'S 115° 41.538'E

Fremantle Harbour Entrance

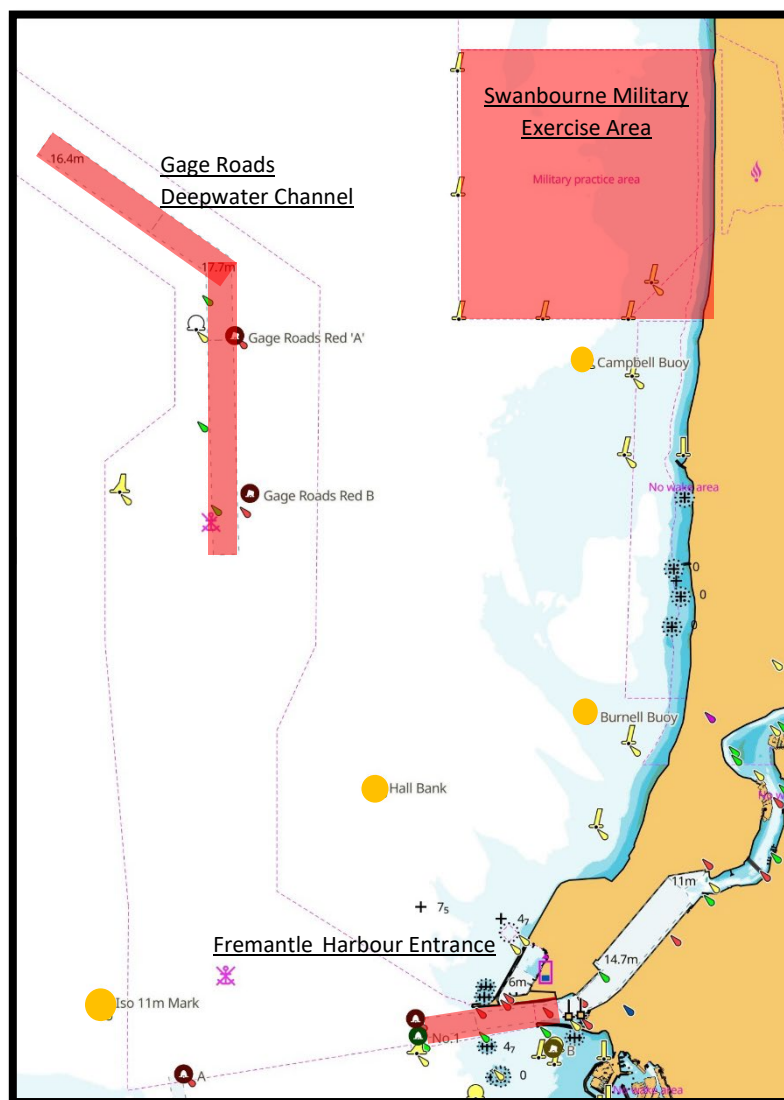
While racing, boats shall not enter an area bounded by the lines joining:

Harbour Entrance Buoy Green No.1 32° 3.443'S 115° 43.044'E

Harbour Entrance Buoy Red 'A' 32° 3.316'S 115° 43.025'E

Harbour Entrance Beacon Red 'C' 32° 3.227'S 115° 43.969'E

Harbour Entrance Beacon Green No.3 32° 3.327'S 115° 43.985'E



Obstructions

For races involving mixed Keelboat designs, FSC uses a performance handicap system (PHF) that levels out the playing field for all competing boats. If a boat takes 100 minutes to complete the race and its Performance Handicap (AHC) was 0.75 then its corrected time (CT) will be 75 minutes (100 x 0.75). The boat with the lowest corrected time (CT) is the race winner.

The following formula is used to determine a boat's performance handicap for subsequent races in a series.

ABBREVIATIONS

- YS** Yardstick. The average of corrected times (If any boat has a PD worse than - 8%, exclude from averaging corrected times). Convert HH:MM:SS to MM:MM
- CT** Corrected time of boat calculated by AHC x Elapsed time.
- PD** Percentage Difference. The percentage that each boat performed above/below the handicap allocated for the race.
- BCH** Back Calculated Handicap. The handicap that a boat actually achieved in the race.
- AHC** Actual Handicap. The boat's handicap used in the race.
- CHC** Calculated Handicap. New boat handicap for following race.

CALCULATE NEW HANDICAP

STEP 1. Calculate PD
 $(^{\wedge}\text{YS} / ^{\wedge}\text{CT} - 1) \times 100 = \#\text{PD}$

STEP 2. Calculate BCH
 $(\text{PD} / 100 + 1) \times \text{AHC} = *\text{BCH}$

STEP 3. Calculate CHC
 $\text{AHC} \times 70\%$
 $+ **\text{BCH} \times 30\%$
 $= *\text{CHC}$

[^]Rounded to 6 decimal places.

[#]Rounded to 2 decimal places

*Limited to 4 decimal places

**If PD is -4% or worse, the BCH becomes AHC x 96%

CLUB HANDICAPPER

The role of the Club Handicapper is to ensure that the allocated handicaps are fair and reasonable based on known information for the next race.

When issuing a new handicap to a boat, the Club handicapper may:

- Allocate a handicap equivalent to the highest known handicap in the division.
- Allocate a handicap equivalent to a boat of the same design within the division and to that of the highest known handicap of that design.
- Allocate a handicap that is equivalent to a similar type of yacht with the division.
- Allocate a different handicap (handicappers will need to justify).

The Club Handicapper may adjust an allocated handicap at any point during a series in the following instances:

- An unknown (new) boat and unknown (new) skipper entering a division at any point.
- An unknown boat and known skipper entering a division.
- The handicapper is not convinced that the allocated handicap is fair and reasonable and needs adjustment.
- Ensuring the boats previous handicap from a comparable series is carried forward to the new series.

Competitors wishing to request a hearing i.e. protest or redress, shall complete a Hearing Request Form available from the Boating Office or online (see QR Code below). Completed forms need to be submitted to the Boating Office or a race official involved with the particular event within the protest time limit, that is 60 minutes after the last boat finishes the last race of the day or the Race Committee signals no more racing today, whichever is later. If the Boating Office is closed, forms may be deposited in the Drop Box attached to the wall outside or emailed to: sailingadmin@fsc.com.au.

The Boating Office staff member will record the date and time of lodgement on the form as well as the Hearing Request case number. Copies will be made for all parties involved. The Protestor may be asked to hand a copy to the Protestee and to wait to be advised of time and place of hearing.

RRS APPENDIX T (ARBITRATION)

Appendix T is stated in this Notice of Race (NoR) and General Sailing Instructions (SIs) and can be a very useful and effective method to resolve a protest between two boats involving Racing Rules such as Windward/Leeward, Overlaps and Mark Roundings. When a protest is lodged, an Arbitrator will be called to try and resolve the matter between the affected parties without having to go to a full protest hearing.

PROTEST HEARINGS

If the protest is not resolved through arbitration, the case will proceed to a Protest Hearing. The time and place for hearings will be advised via email to all parties confirming date, time and location of the hearing. Protest hearings are usually conducted in the FSC Activities Room on Wednesday evenings, with the first case heard at 18:00 hours.



TROPHY	AWARDED TO
Club Championship Series Shield	Season winner Division 1 PHF
Club Championship Series Shield	Season winner Division 2 PHF
Club Championship Series Shield	Season winner Division 6 JAM PHF
Summer Consistency Series Overall	Overall winner best consistency using Sinbad High Point Scoring System.
Summer Consistency Series Shield	Season winner Division 1 PHF
Summer Consistency Series Shield	Season winner Division 2 PHF
Summer Consistency Series Shield	Season winner Division 6 JAM PHF
Opening Day Trophy*	Winner in each Division PHF
Memorial Perpetual Shield*	Overall winner on best PD
Ken Cook Memorial Race Shield*	Overall winner on best PD
Ron Warren Memorial Race Trophy*	Overall winner on best PD
Australia Day Trophy*	Overall winner on best PD
Mike Harvey Memorial Race Shield*	Overall winner on best PD
Warne Shield*	Overall winner on best PD
Cockburn Cup (FSC vs TCYC)*	Lowest points team based on PD
Ron & Marie Brown Cup*	Overall FSC winner on best PD
Max Shean Memorial Race Shield*	Overall winner on best PD
The Caris Trophy ANZAC Cup*	Overall winner on best PD
Crew Helm Day Shield*	Winner in each Division PHF
Coastal Series Trophy**	Winner Division 1 PHF
Coastal Series Trophy**	Winner Division 2 PHF
Coastal Series Trophy**	Winner Division 6 JAM PHF
Terry Fisher Series Trophy**	Overall winner on best PD
Terry Fisher Series Trophy**	Winner Division 1 PHF
Terry Fisher Series Trophy**	Winner Division 2 PHF
Terry Fisher Series Trophy**	Winner Division 3 PHF
Terry Fisher Series Trophy**	Winner Division 4 PHF
Winter Performance Series Shield**	Winner Division 1 IRC
Winter Performance Series Shield**	Winner Division 2 IRC
Winter Performance Series Shield**	Winner Division 3 IRC
Winter Performance Series Shield**	Winner Division 6 JAM IRC

Winter Performance Series Shield**	Winner Division 1 PHF
Winter Performance Series Shield**	Winner Division 2 PHF
Winter Performance Series Shield**	Winner Division 3 PHF
Winter Performance Series Shield**	Winner Division 6 JAM PHF
Valmadre Cup Series Trophy**	Winner Division 1 & 2 IRC
	Winner Division 1, 2 & 6 JAM PHF
Arlene Trophy*	Winner Division 2 PHF
Success Cup	Winner Division 1 & 2 IRC & PHS
Captain Stirling Cup	Winner Division 1 & 2 IRC & PHS

ABBREVIATIONS

IRC	International Rating Certificate
PHF	Performance Handicap Formula (FSC system)
PHS	Performance Handicap System (ORWA system)
PD	Percentage Difference. The percentage that each boat performed above/below the handicap allocated for the race.
JAM	Jib and Main

* Individual race trophies presented on the day.

** Series trophies presented on the day of the final race.

Season trophies will be awarded at the annual Keelboat Presentation Night. Refer **Addendum A** Schedule of Events.

SI 7.6 REQUIRES SKIPPER AND ALL CREW TO BE SIGNED ON VIA TOPYACHT PRIOR TO EACH CLUB RACE.

EQUIPMENT REQUIRED

PC, smartphone or tablet with internet access.

WHEN TO SIGN ON

On the day of the race, sign on at any time before your first warning signal.

WHERE TO SIGN ON

Signing skipper and crew on must be done online via TopYacht.

HOW TO SIGN ON

Firstly, your boat must be entered for a series. **Refer NoR/SI 7.3**
 Following successful series entry, adding crew becomes possible.
 Use this link to access TopYacht Sign On:

https://www.topyacht.com.au/db/kb2/login_crew_list.php?evid=1717&sn=

Or scan the QR code on the right with your mobile electronic device.

TIP: Consider bookmarking this link in your browser as it will not change for the duration of the 2023 / 2024 season. This can also be added to your phone home screen as a web app for quick access.



Fremantle Sailing Club Season 2023/2024
Update race crew list.

Primary Sail No:

Password/PIN No:

Show password

STEP 1.

This is the first screen you will see.

On this screen, if your boat is already entered for the FSC 2023/2024 season, enter your sail number and your nominated TopYacht password. If you have forgotten your password, contact Boating Office or click on the Forgotten Password button at the bottom of the screen.

If you click on the Forgotten Password, you will receive an immediate email response.

Click on the Log In button.

Fremantle Sailing Club Season 2023/2024
Select Series to update crew

Summer Series [Consistency]

Terry Fisher Series

Twilight Sailing

Coastal Series

Winter Series

STEP 2.

This second screen shows the events you have nominated for when submitting the initial series boat entry.

Select the event you are competing in on the day.

Summer Series [Consistency, Championship & trophy races] ~ crew for 2023-07-29

We will be sailing We are not sailing / have retired


*** Provide Skipper/Crew Details**
 This is the 'Day Crew' area for crew who have raced cat 3, 4, 5, 6, 7 on this boat.

On	Board	Drop	First Name	Last Name	Mobile	Email
<input type="checkbox"/>		<input checked="" type="checkbox"/>	Adam	Ant	2113	aa@aa.co

STEP 3.

Firstly, on the day of the race, if you are sailing, click on “**We will be sailing**” or otherwise select “**We are not sailing / have retired**”.

Secondly, populate your crew list. Select crew from the “**Get existing crew**” button. If you have crew that are not listed as existing crew, select “**Create a new crew**” button.


Crew can be added or removed at any time. Use the  button to remove crew who are not onboard on the day. These crew will be retained in your existing crew pool for future races.

Required Crew Details

- Name
- Mobile
- Email
- Australian Sailing No. (all racing crew must have an Australian Sailing number. Refer RRS 46.)
- Emergency Contact
- Emergency Number

Once all crew have been selected for the day, click **Submit**.

If there are any changes to be made on the day, repeat the process from Step 1.

TIP: If there are crew you wish to remove permanently, select “**Get existing crew**” and click on the  beside the crew name.

ASSISTANCE

Boating Office staff are only too happy to help. Please contact:

Sailing Administrator	Scott Nunn	sailingadmin@fsc.com.au	0478 073 452
Sailing Manager	Chris White	sailingmanager@fsc.com.au	

Alpha



Code Flag A

Bravo



Code Flag B

Charlie



Code Flag C

Delta



Code Flag D

Echo



Code Flag E

Foxtrot



Code Flag F

Golf



Code Flag G

Hotel



Code Flag H

India



Code Flag I

Juliet



Code Flag J

Kilo



Code Flag K

Lima



Code Flag L

Mike



Code Flag M

November



Code Flag N

Oscar



Code Flag O

Papa



Code Flag P

Quebec



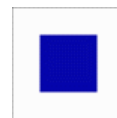
Code Flag Q

Romeo



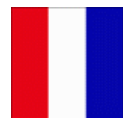
Code Flag R

Sierra



Code Flag S

Tango



Code Flag T

Uniform



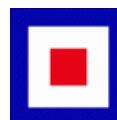
Code Flag U

Victor



Code Flag V

Whiskey



Code Flag W

Xray



Code Flag X

Yankee



Code Flag Y

Zulu



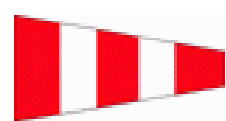
Code Flag Z

1st Sub



General Recall

Ans Pennant



Flag AP

RACE FORMS & LINKS

Scan these QR codes with your phone for direct access to these online forms and links.



Scoring Enquiry

For all enquiries related to race results.



Booking An Audit

Book your boat in for an equipment audit.



Changes

For skipper, crew or equipment changes to your boat entry.



Hearing Request

Download form for protest or redress.



Season Entry

Register here for Keelboat Racing and Twilight Sailing



Keelboat Sign On

Sign on crew for each race.

Fremantle Sailing Club Cruising Section organises cruises and events in company with other boats to advance seamanship, enjoy the camaraderie and support of like-minded people.

ON WATER AND SOCIAL EVENTS

- Monthly Sunday Sailing, a cruisy afternoon under jib and main followed by presentations on the Sunset Deck.
- Coastal cruising to local anchorages and islands in a safe and organised group.
- Longer voyages to destinations such as the Abrolhos Islands, Geographe Bay, Shark Bay organised by the cruise Co-ordinator and the network of fellow sailors.
- Topic Nights generally held on the third Thursday evening of the month, where experienced sailors provide a wide range of information or blue-water cruisers share their adventures and knowledge.
- Tuesday evening on the Sunset Deck for Live-a-Board BBQ.
- Wednesday Twilight sailing.

SEAMANSHIP AND SAFETY

The Section provides advice, online resources and access to world-class books and chart data in the FSC Library and Chart Room. A comprehensive collection of nautical publications on just about every aspect of cruising, boat ownership and limited collection of uncorrected paper charts. Cruising also has access to Cruising Guides for local and distant waters and a PC-based set of electronic charts of Australia.

PUBLICATIONS

The Western Australian Cruising Guide is regarded as the coastal cruising bible for WA and is regularly updated by its Editor, Kim Klalka.

To assist with safety and risk management compliance, we also provide free 'Green Book Safety Recommendations for Cruisers' and also advice from the Committee's Safety Officer. From time to time the section organises person overboard recovery exercises, flare experiences, fire prevention and further safety at sea and onboard practice.

CRUISING NEW HORIZONS

Visitors from overseas, interstate and other local clubs are welcomed by our Long-Distance Cruising Representative to assist with local knowledge and expertise.

ENVIRONMENT

Cruising sailors support caring for the oceans with an annual Clean Oceans Day involving all FSC Sections and work in conjunction with Tangaroa Blue and the Club's Marine Environment Committee.

CRUISER OF THE YEAR

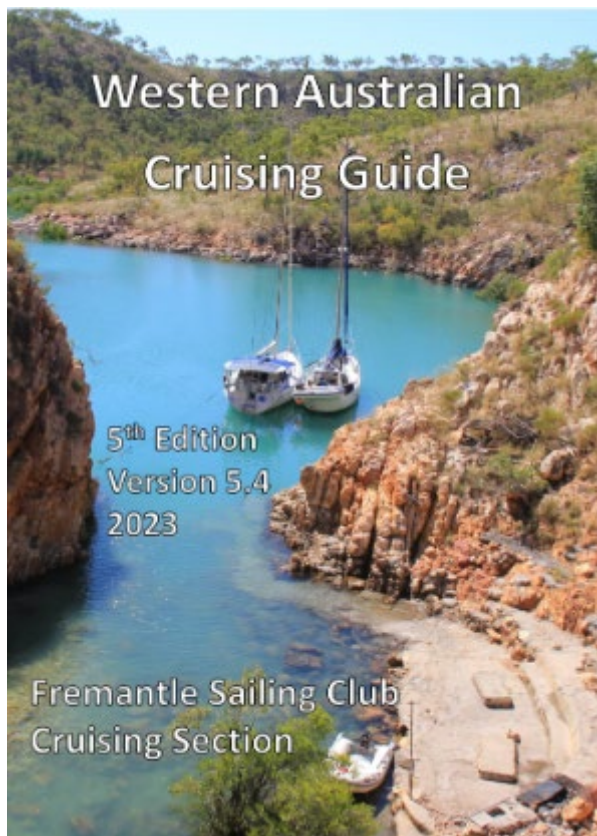
“It’s all about the dream’. To recognise the achievements and inspire others to “just do it”, we select one of our sailors as the “Cruiser of the Year”.

JOIN IN

- Come along to the regular meetups, topic nights, monthly Sunday sailing and cruises.
- Check the Cruising Section noticeboard, FSC online calendar or the FSC On Water Calendar for upcoming events.
- Join the FSC Cruising Google Group by contacting the Cruising Captain.
- Visit our Facebook Group ‘Fremantle Sailing Club Cruising Section’
- Contact the Cruising Committee by email: cruising.captain@fsc.com.au



Join us on Facebook!



SCAN



Download your copy

Hardcopy version of the guides are available from reception for \$75 each.

To buy one of these hardcopies contact FSC on: 08 9435 8800 or reception@fsc.com.au

MONTHLY JIB & MAIN SAILING

Jib and Main (J&M) sailings are usually conducted on the third Sunday of each month, as well as FSC Opening Day, ANZAC Day and Australia Day. Refer **Addendum A Schedule of Events**.

J&M sailing consists of a fun afternoon on the water starting at approximately 1300 followed by post cruise refreshments and food options available from the Sailors' Bar. Spinnakers are not permitted, there are no prizes for fastest or first but there a few for participation are presented after the event on the Sunset Deck.

REGISTRATION

Participants either register on the noticeboard in the foyer or contact the Cruise Coordinator with expected number of persons on board (PoB).

RULES

J&M sailing follows the **International Regulations for Preventing Collisions at Sea 1972 (COLREGs)** and DoT WA Regulations, not the Racing Rules of Sailing. This is a fun event and any racing tactics are strongly discouraged. A constant radio watch is maintained on VHF 72 (low Power). The Green Book is the ultimate guide to equipping your boat and crew for cruising and the best thing is that is free from FSC Reception or from the FSC Cruising webpage.

GATE RABBIT START PROCEDURE

At approximately 1245 the Rabbit Boat will announce the course to be sailed for the day, i.e. course 1 or 2.

At approximately 1255, the Rabbit Boat will announce the commencement of the start procedure.

With 1 minute to go an announcement will be made on VHF 72 that "the start gate will be opening".

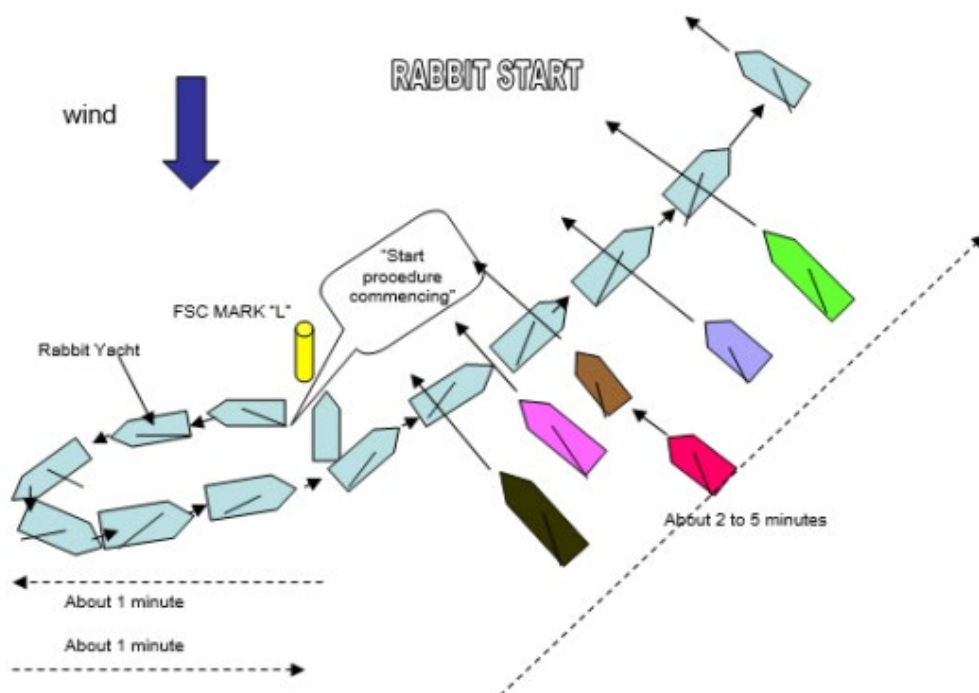
The Rabbit Boat will initially be proceeding in a westerly direction at or about Mark L for Course 1 or a northerly direction at or about Beagle Rock Iso mark for Course 2.

As the Rabbit Boat passes the Start Mark, all boats will start by passing between the stern of the Rabbit Boat and the start mark for that course.

When all (or most) of the boats have "started", the Rabbit Boat will also be able to go on to a course towards the first mark of the course for the day.

CRUISING SECTION

PLEASE NOTE: DURING THE START PROCEDURE, THE RABBIT BOAT HAS RIGHT OF WAY.



THE START

Start adjacent to FSC Mark L or Beagle Rock ISO mark.

THE COURSES

COURSE 1	<i>approx. 6.5Nm</i>
MARKS (FSC Marks)	REQUIRED SIDE
Start at Mark L	
Mark F	<i>Starboard</i>
Mark W	<i>Port</i>
Mark S	<i>Port</i>
Mark W	<i>Starboard</i>
Mark F	<i>Port</i>
Finish at Mark L	<i>Starboard</i>

COURSE 2	<i>approx. 7.0Nm</i>
MARKS (S&P Marks)	REQUIRED SIDE
Start at Beagle Rock	
S&P 1	<i>Port</i>
S&P 2	<i>Port</i>
S&P 3	<i>Port</i>
S&P 4	<i>Port</i>
S&P 5 (Top Mark)	<i>Starboard</i>
S&P 4	<i>Starboard</i>
S&P 3	<i>Starboard</i>
S&P 2	<i>Starboard</i>
S&P 1	<i>Starboard</i>
Finish at Beagle Rock	<i>Starboard</i>

TWILIGHT SAILING

Join in a safe and relaxed-style of sailing on Wednesday evenings from November to April each year. Twilight sailing is a great way to unwind at the end the day and to take in some breathtaking sunsets whilst enjoying cruising in company.

TO ENTER

To join a Twilight sail, boats shall register in TopYacht via link below:

<https://fsc.com.au/onb/>

Boats eligible to join in, shall comply with the Department of Transport (DoT) safety regulations:

- An operational marine radio capable of transmitting and receiving on VHF 72 and 16.
- Two working water-resistant floating torches.
- Navigational lights.
- EPIRB.

SCHEDULE

Twilights are run regularly on Wednesday evenings. Please check the Schedule of Events in this book for exact dates. Please note below, start times do change during the season.

Start Times

1800	01 November – 27 March
1730	03 April – 24 April

SIGN ON

Prior to the Twilight start, boats shall contact the Twilight on-water support vessel 'Success' on VHF 72 with the name of their boat and number of people on board (PoB).

RETIREMENT

Should a boat not complete the course and retire early, boats shall advise 'Success' on VHF 72.

TWILIGHT FLAG

When the Twilight Flag is displayed on the main Clubhouse signal mast, Twilight sailing will be commencing as scheduled.

FLAG Y

When Flag Y is displayed on the main Clubhouse signal mast, all persons on board shall wear pfd's whilst afloat.

ABANDONMENT

Due to adverse weather conditions, a Twilight session may be abandoned and is signalled by displaying Code Flag N. Boats that continue to sail will do so without any Club on-water support.

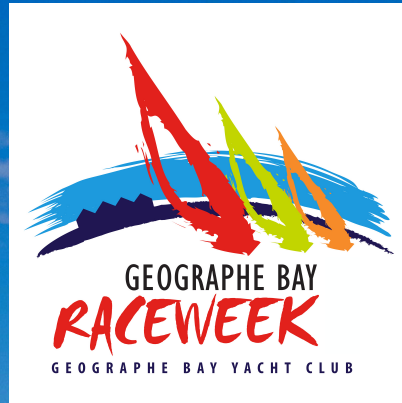
TWILIGHT COURSES

COURSE 1	<i>approx. 6.4 Nm</i>
MARKS	REQUIRED SIDE
Start at Mark E	
Mark Y	<i>Starboard</i>
Mark W	<i>Starboard</i>
Mark F	<i>Starboard</i>
Mark Y	<i>Starboard</i>
Mark N	<i>Starboard</i>
Finish at Mark E	

COURSE 3	<i>approx. 3.8 Nm</i>
MARKS	REQUIRED SIDE
Start at Mark E	
Mark Y	<i>Starboard</i>
Mark L	<i>Port</i>
Mark N	<i>Port</i>
Finish at Mark E	

COURSE 4	<i>approx. 3.8 Nm</i>
MARKS	REQUIRED SIDE
Start at Mark E	
Mark F	<i>Port</i>
Mark B	<i>Port</i>
Mark F	<i>Starboard</i>
Finish at Mark E	

SAVE THE DATE



FEB 3 - 9, 2024



 **PHONE: +61 8 9435 8800**

 **ADDRESS: 151 MARINE TERRACE, FREMANTLE**

 **EMAIL: SAILINGADMIN@FSC.COM.AU**

 **WEBSITE: WWW.FSC.COM.AU**