



INSHORE RACING WARNE SHIELD

Saturday, 11 February 2023

Supplementary Sailing Instructions (SSIs)

Organising Authority (OA) Fremantle Sailing Club

1. RULES

- 1.1. The event is governed by the rules as defined in The Racing Rules of Sailing (RRS).
- 1.2. The Inshore Racing Sailing Instructions as modified by these SSIs.

2. SCHEDULE OF RACE

Date	Time	Event
Saturday, 11 February	0855	Warning signal for Divisions 1, 2 & 6
	After racing	Presentation of results at FSC

3. CLASS FLAG

- 3.1. The class flag for all Divisions is a white flag.
- 3.2. Boats shall display their assigned Inshore Division flag. Refer SI. 10.2.

4. COURSE

Description	Rounding	Notes
Start at Mark L		
FSC Mark S	Port	
FSC Mark H	Port	
Southern Flats East Cardinal Buoy	Starboard	
*TCYC Buoy 'Q'	Starboard	<i>Stay clear of prohibited area along the shoreline</i>
*Finish	Val St Jetty	<i>Finishing in a south westerly direction</i>

Note: The course may be shortened at Southern Flats East Cardinal Buoy. Marks prefixed with (*) in the course description shall be omitted. Refer SI 12.4 Shortening Course.

5. MARKS

Marks	Approximate Positions	
Southern Flats East Cardinal Buoy	32° 15.20 S	115° 43.50 E
TCYC Buoy 'Q'	32° 16.40 E	115° 43.60 E
Finish Mark	32° 16.46 S	115° 43.55 E

Attachment A shows the approximate location of TCYC Club marks.

6. OBSTRUCTIONS [DP]

Refer Attachment A

7. THE FINISH

The Finishing line will be an imaginary line between a white PVC mark off the end of the Val St Jetty and a mark in the TCYC Tower. (Refer to diagram below.)



8. TIME LIMIT

8.1. The time limit is 1230 hrs.

8.2. Boats failing to finish within the time limit will be scored "Did Not Finish". This changes RRS 35 & A5.

9. SAFETY REGULATIONS

Refer to SI.7 COMMERCIAL SHIPPING

10. BERTHING

10.1. Boats may select a vacant TCYC mooring suitable for their vessel.

10.2. FSC boats may use TCYC moorings if going ashore during lunch time.

10.3. A shuttle service will be available for transfers between boats and TCYC Clubhouse.

10.4. Attachment B shows the TCYC Mooring Map.

10.5. Boats shall not utilise the Dolphin Charter Boat mooring. This mooring is identified by the words 'Dolphin Tours'. [DP]

11. PRESENTATIONS

Presentation of results will be announced together with the Cockburn Cup Race results at FSC following the conclusion of both races.

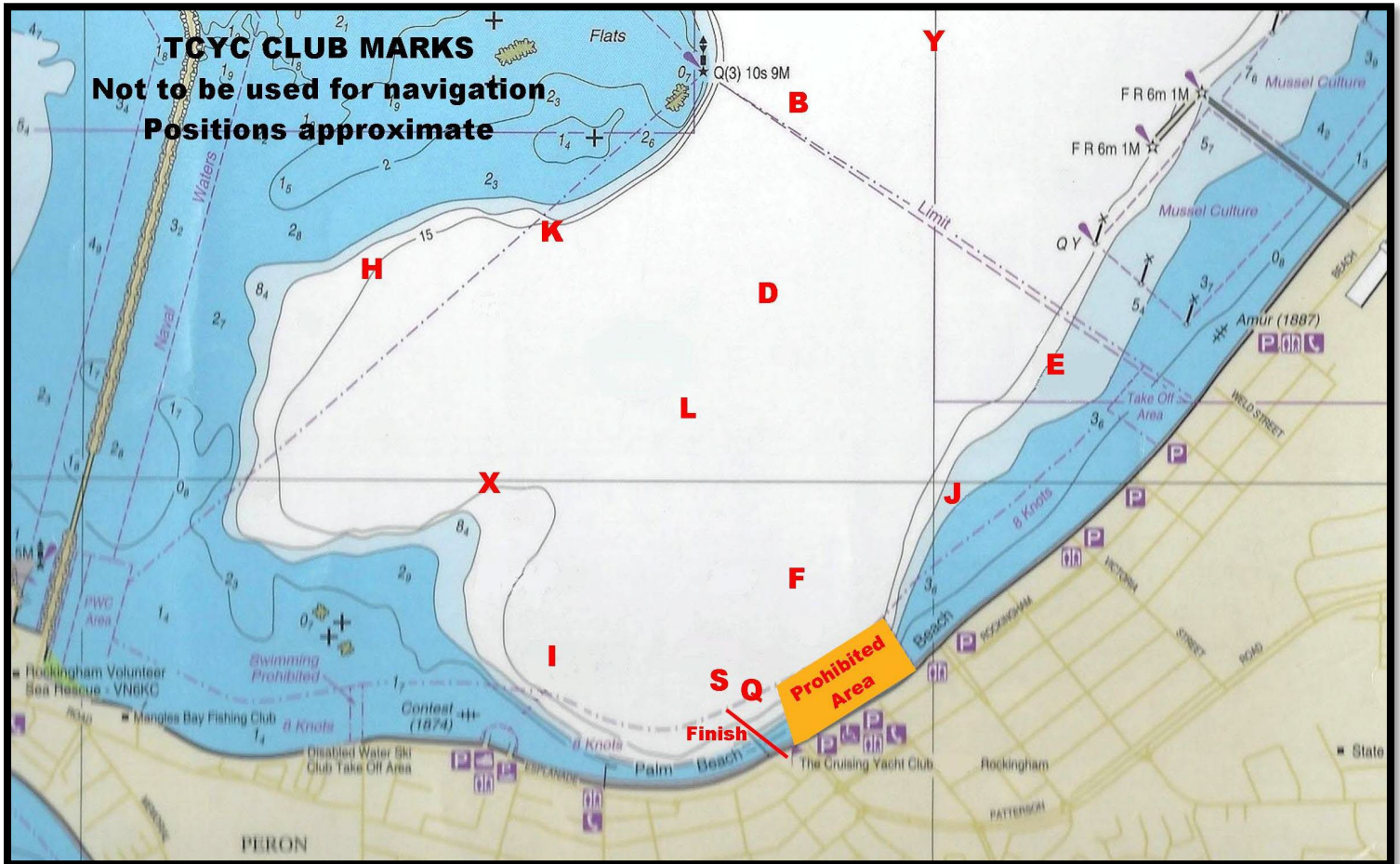
12. KEY CONTACTS

TCYC Shuttle Ferry	Call sign "TCYC Ferry"	VHF 71
TCYC Finish Team	VC Sonia Mason	0458 813 138
TCYC Any Other Enquires	TCYC RO Neil Mason	0414 750 023
FSC Inshore Race Control	Deputy RO Frank Rodda	0417 946 871
FSC Harbour Master	Jason Hands	0433 024 790



INSHORE RACING
WARNE SHIELD RACE
ATTACHMENT A

TCYC CLUB MARKS



OBSTRUCTIONS[DP]

The following area and lines are designated as an obstruction:

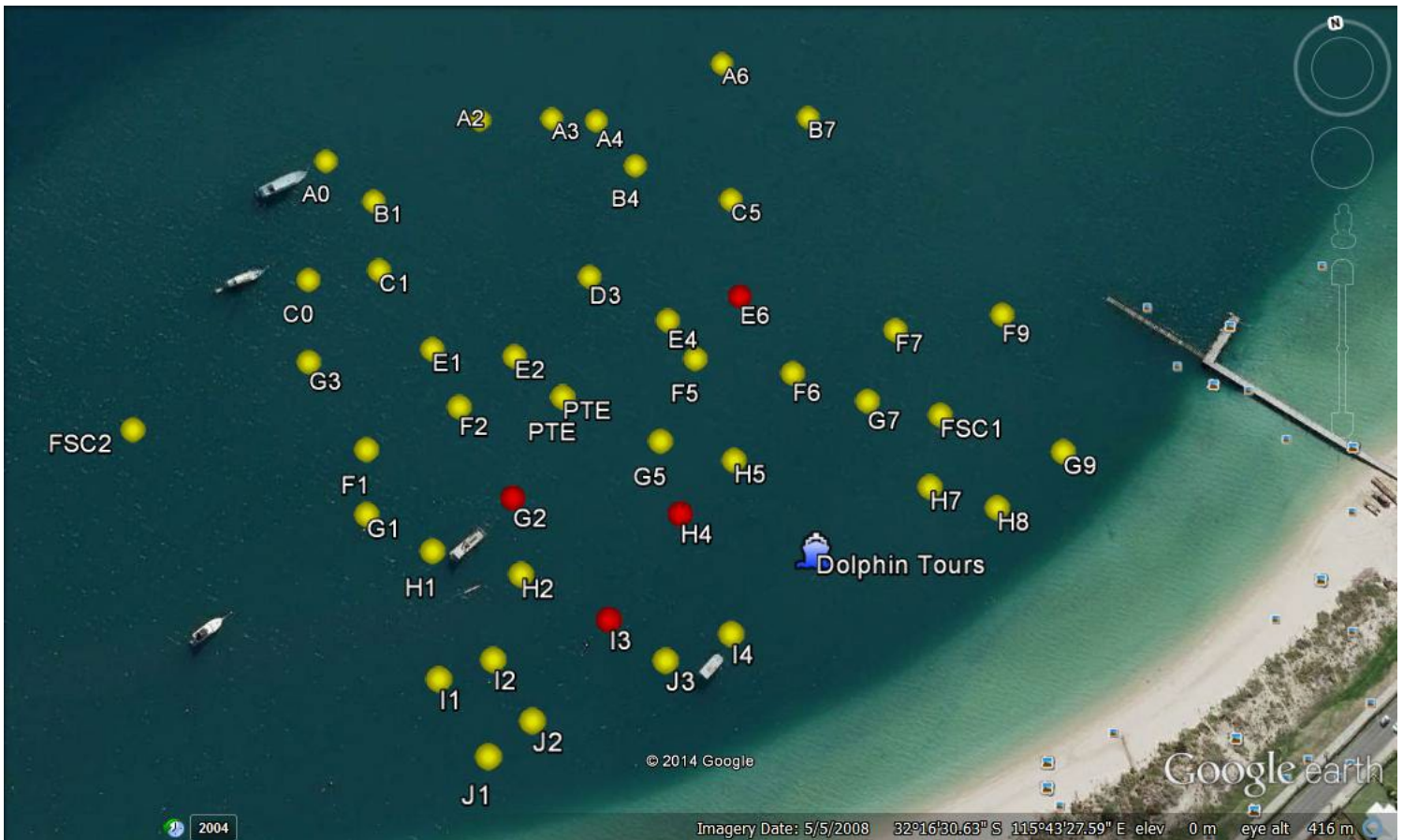
- All the waters bounded by lines commencing on the foreshore at the foot of Railway Terrace (approximately 32°16.512'S, 115°43.677'E);
- then extending northwest to 32°16.409'S, 115°43.635'E;
- then extending about 470 metres northeast along a line parallel to and 200 metres from the foreshore to 32°16.280'S, 115°43.891'E;
- then southeast to the foreshore at 32°16.367'S, 115°43.956'E.

All co-ordinates based on GDA 94. Refer to **Prohibited Area** in diagram above.



INSHORE RACING
WARNE SHIELD RACE
ATTACHMENT B

TCYC MOORING MAP



Moorings will not be allocated to specific boats. Please use discretion when selecting a mooring and allow sufficient swing distance.