



WARNE SHIELD

Supplementary Sailing Instructions (SSIs)

Organising Authority (OA) Fremantle Sailing Club

1. RULES

- 1.1. The event is governed by the rules as defined in The Racing Rules of Sailing (RRS).
- 1.2. Boats shall comply with AS Special Regulation Part 1, Category 5.
- 1.3. The Keelboat NoR & General Sailing Instructions 2023-2024 as modified by these SSIs.

2. SCHEDULE OF RACE

DATE	TIME	EVENT
Saturday, 24 February 2024	0855	Warning signal for Divisions 1, 2 & 6 JAM
	After racing	Presentation of results at FSC

3. COMMUNICATION

On the water, the Race Committee intends to monitor and communicate with competitors on VHF 72.

4. DIVISION FLAG

- 4.1. The Division flag will be the Combined Divisions white flag.
- 4.2. Boats shall display their assigned Keelboat Division flag. Refer General SI. 11.2.

5. COURSE

- 5.1. The course to sail is described below:

DESCRIPTION	REQUIRED SIDE	NOTES
Start at FSC Mark L		
FSC Mark S	Port	
FSC Mark H	Port	
TCYC Mark Y	Starboard	
TCYC Mark B	Port	
* TCYC Mark 'Q'	Starboard	<i>Stay clear of prohibited area along the shoreline.</i>
* Finish	Val St Jetty	<i>Finishing in a south westerly direction</i>



5.2. Shortening Course

The course may be shortened at TCYC Mark B. Marks prefixed with (*) in the course description shall be omitted. RRS 32.2(a) applies.

6. MARKS

MARKS	CO-ORDINATES (WGS84)		DESCRIPTION
TCYC Mark Y	32° 15.125 S	115° 43.955 E	White PVC Pole
TCYC Mark B	32° 15.247 S	115° 43.742 E	White PVC Pole
TCYC Buoy 'Q'	32° 16.410 S	115° 43.597 E	Yellow Pimple Buoy
Finish Mark	32° 16.460 S	115° 43.550 E	White PVC Pole

Attachment A shows the approximate location of TCYC Club marks.

7. OBSTRUCTION [DP]

Refer **Attachment A**

8. THE FINISH

Refer **Attachment B**

9. TIME LIMIT

9.1. The time limit is 1230 hrs.

9.2. Boats failing to finish by the time limit will be scored "Did Not Finish". This changes RRS 35 & A5.

10. SAFETY REGULATIONS

Refer to General SI.24 COMMERCIAL SHIPPING

11. BERTHING

11.1. Boats may select a vacant TCYC mooring suitable for their vessel.

11.2. FSC boats may use TCYC moorings if going ashore during lunch time.

11.3. A shuttle service will be available for transfers between boats and TCYC Clubhouse.

11.4. **Attachment C** shows the TCYC Mooring Map.

12. PRESENTATIONS

Presentation of results will be announced together with the Cockburn Cup results at FSC following the conclusion of both races.

13. KEY CONTACTS

Race Committee

Keelboat Captain	John Rayner	0401 935 530
Rear Commodore Sail	Steve Parkinson	0413 877 359
Sailing Manager	Chris White	0408 478 414
Fremantle Race Control	RO Frank Rodda	0478 637 135
Handicapper	Ernie Delfos	0477 712 024

Other Contacts

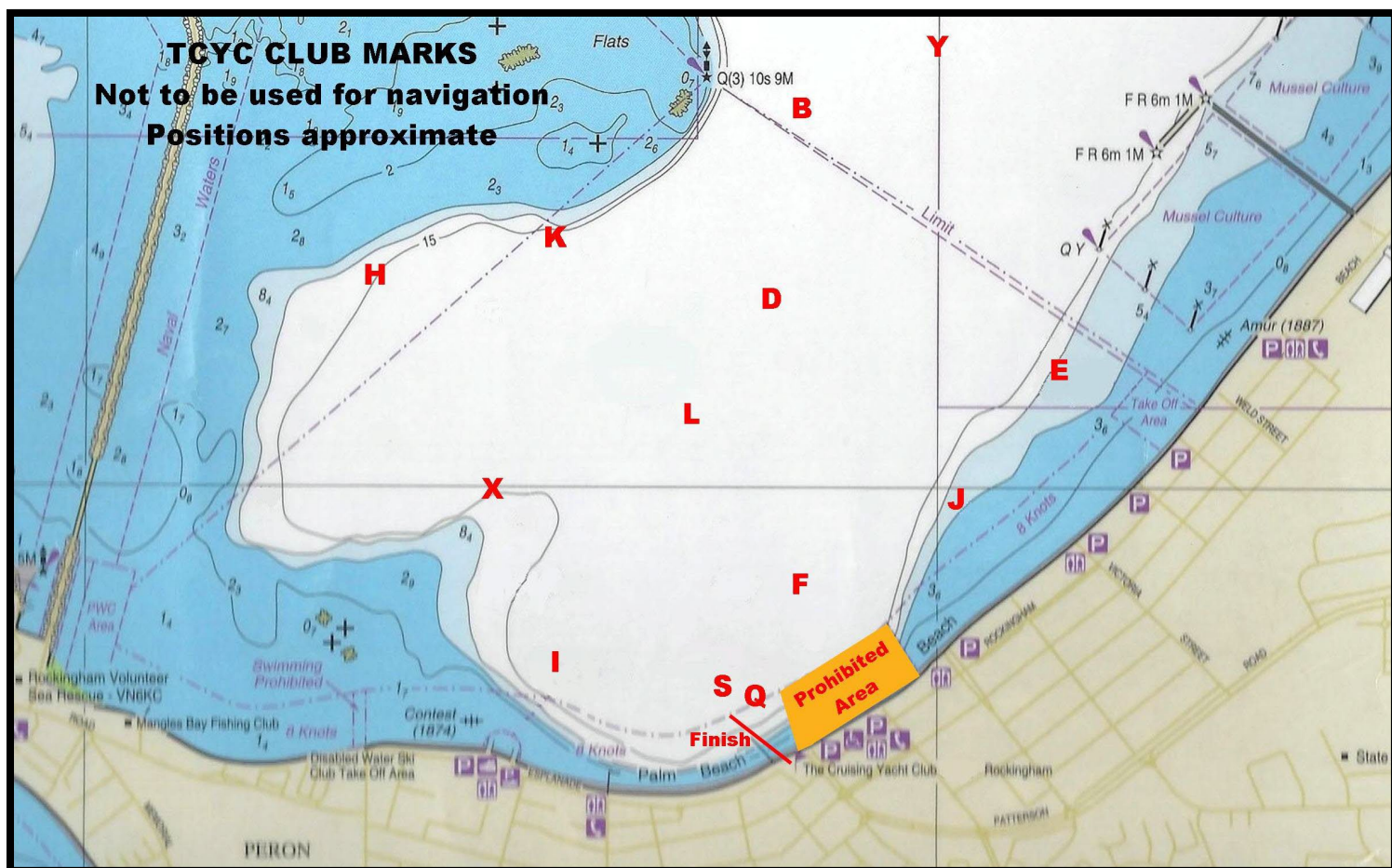
TCYC Shuttle Ferry	Call sign "TCYC Ferry"	VHF 71
TCYC Finish Team	Commodore Sonia Mason	0458 813 138
TCYC Any Other Enquires	TCYC RO Neil Mason	0414 750 023





WARNE SHIELD ATTACHMENT A

TCYC CLUB MARKS



OBSTRUCTION[DP]

The following area and lines are designated as an obstruction:

- All the waters bounded by lines commencing on the foreshore at the foot of Railway Terrace (approximately 32°16.528'S, 115°43.679'E);
- then extending northwest to 32°16.409'S, 115°43.633'E;
- then extending about 470 metres northeast along a line parallel to and 200 metres from the foreshore to 32°16.266'S, 115°43.876'E;
- then southeast to the foreshore at 32°16.377'S, 115°43.964'E.

All co-ordinates based on WGS84. Refer to **Prohibited Area** in diagram above.



(08) 9435 8800 Reception
(08) 9435 8821 Boating Office



www.fsc.com.au
sailingadmin@fsc.com.au



151 Marine Terrace
Fremantle WA 6160



WARNE SHIELD ATTACHMENT B

THE FINISH

The Finishing line will be an imaginary line between a white PVC mark off the end of the Val St Jetty and a mark in the TCYC Tower. (Refer to Illustration below.)



(08) 9435 8800 Reception
(08) 9435 8821 Boating Office



www.fsc.com.au
sailingadmin@fsc.com.au

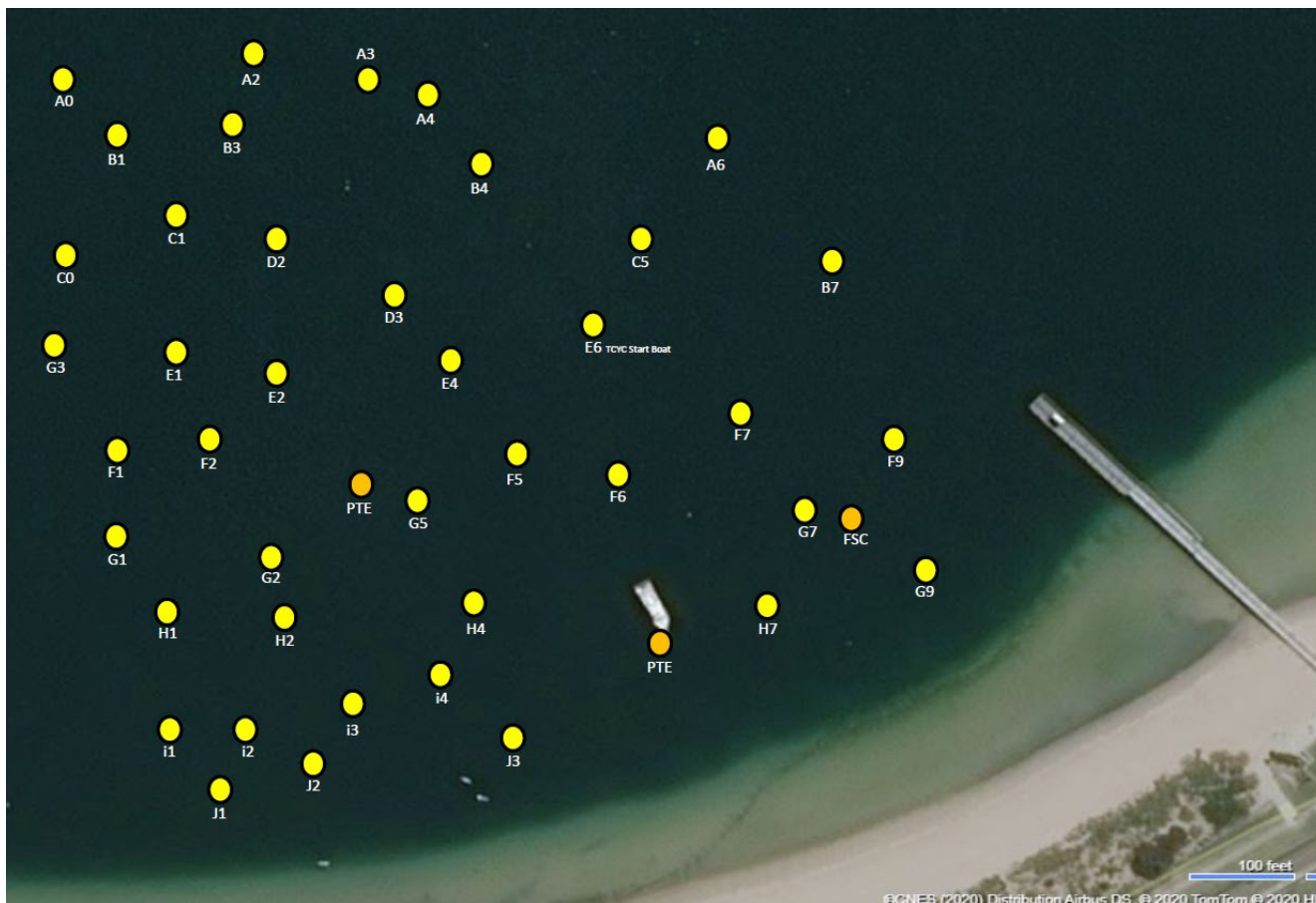


151 Marine Terrace
Fremantle WA 6160



WARNE SHIELD ATTACHMENT C

TCYC MOORING MAP



Moorings will not be allocated to specific boats. Please use the mooring guide on the following page when selecting a mooring and allow sufficient swing distance.

Do not use moorings E6 or PTE.



(08) 9435 8800 Reception
(08) 9435 8821 Boating Office



www.fsc.com.au
sailingadmin@fsc.com.au



151 Marine Terrace
Fremantle WA 6160

MOORING GUIDE

Updated 22/02/24

MOORING #	Co-ordinates		Boat Length	Colour
	32' 16"	115' 43"		
A0	441	374	Up to 10m	Yellow
A2	437	417	Up to 10m	Yellow
A6*	431	475	Up to 15m	Yellow
B1*	453	389	Up to 15m	Yellow
B3	458	428	Up to 9m	Yellow
B4	456	454	Up to 10m	Yellow
B7*	432	497	Up to 15m	Yellow
C0	469	372	Up to 10m	Yellow
C1	469	411	Up to 14m	Yellow
C5	464	476	Up to 14m	Yellow
D3	471	464	Up to 10m	Yellow
E2*	492	419	Up to 15m	Yellow
E4*	489	446	Up to 15m	Yellow
F1	507	383	Up to 9m	Yellow
F2*	501	405	Up to 15m	Yellow
F5*	506	460	Up to 15m	Yellow
F9*	498	535	Up to 12m	Yellow
G3*	487	371	Up to 15m	Yellow
G9*	518	537	Up to 15m	Yellow
H2*	536	415	Up to 15m	Yellow
H7	531	509	Up to 10m	Yellow

