



AUSTRALIA DAY TROPHY RACE

Friday, 26 January 2024

Supplementary Sailing Instructions (SSIs)

Organising Authority (OA) Fremantle Sailing Club

1. RULES

- 1.1. The event is governed by the rules as defined in The Racing Rules of Sailing (RRS).
- 1.2. Boats shall comply with AS Special Regulation Part 1, Category 5.
- 1.3. The Keelboat NoR & General Sailing Instructions 2023-2024 as modified by these SSIs.

2. SCHEDULE OF RACE

DATE	TIME	EVENT
Friday, 26 January	1015	Warning signal for Divisions 1, 2 & 6
	After racing	Presentation of results at FSC

3. DIVISION FLAG

- 3.1. The Division flag will be the Combined Divisions white flag.
- 3.2. Boats shall display their assigned Keelboat Division flag. Refer SI. 11.2.

4. COURSES

The course descriptions and diagrams are shown in SSI Attachment A.

5. THE START

The starting line is between a mast displaying an orange flag on the Race Committee vessel and the course side of FSC Mark L.

6. THE FINISH

The finishing line is between a mast displaying a blue flag on the Race Committee vessel and the course side of FSC Mark L.

7. TIME LIMIT

- 7.1. The time limit is 1230 hrs.
- 7.2. Boats failing to finish by the time limit will be scored "Did Not Finish". This changes RRS 35 & A5.

8. SAFETY REGULATIONS

Refer to SI. 24 COMMERCIAL SHIPPING

9. PRIZES

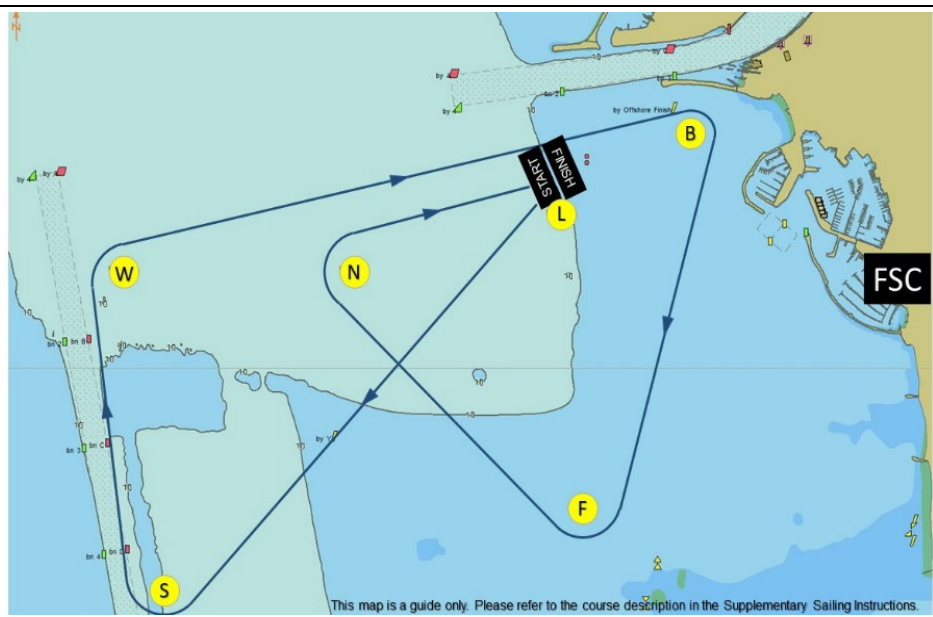
- 9.1. Pennants will be awarded for 1st, 2nd, 3rd and fastest in each Division.
- 9.2. The Australia Day Trophy will be awarded to the boat with best performed percentage on handicap (PD) overall.

ATTACHMENT A

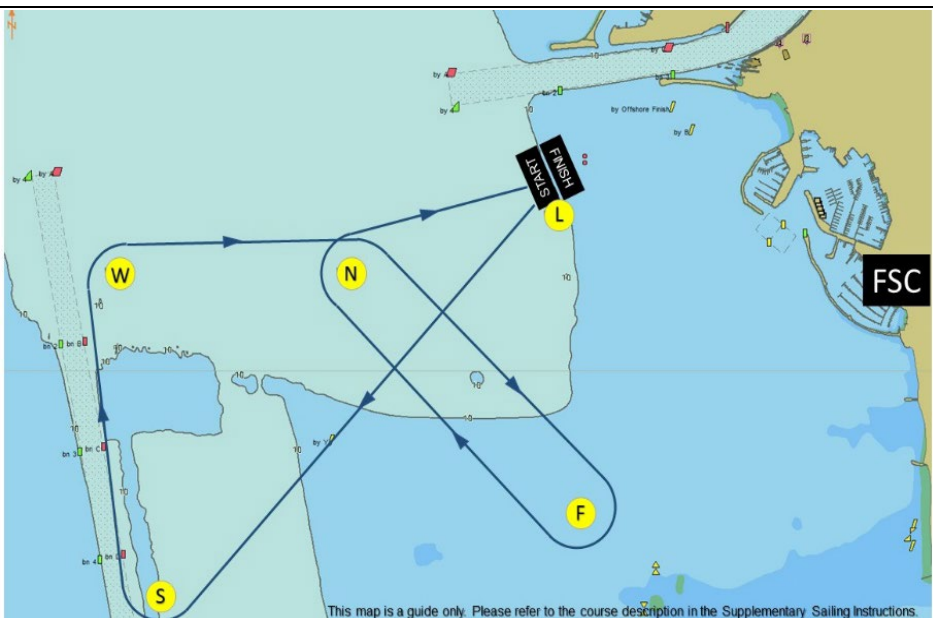
COURSES

AUSTRALIA DAY TROPHY RACE 2024

DIVISION 1	
MARKS	REQUIRED SIDE
FSC Mark L	Start
FSC Mark S	Starboard
FSC Mark W	Starboard
FSC Mark B	Starboard
FSC Mark F	Starboard
FSC Mark N	Starboard
FSC Mark L	Finish
Course Length	8.7 Nm



DIVISION 2	
MARKS	REQUIRED SIDE
FSC Mark L	Start
FSC Mark S	Starboard
FSC Mark W	Starboard
FSC Mark N	Starboard
FSC Mark F	Starboard
FSC Mark N	Starboard
FSC Mark L	Finish
Course Length	7.1 Nm



DIVISION 6 J&M	
MARKS	REQUIRED SIDE
FSC Mark L	Start
FSC Mark S	Starboard
FSC Mark N	Starboard
FSC Mark F	Starboard
FSC Mark N	Starboard
FSC Mark L	Finish
Course Length	6.5 Nm

