

## SAILING INSTRUCTIONS (SIs)

The Organising Authority (OA) is Fremantle Sailing Club (FSC)

**26 & 27 October 2024**

Incorporating the Wind Foil WA State Championships

## CHARLIE COURSE

**AMENDED 25/10/2024 NTC#1**

*The notation '[NP]' in a rule means that a board may not protest another board for breaking that rule. This changes RRS 60.1(a).*

*The notation '[SP]' denotes a rule for which a standard penalty may be applied by the Race Committee without a hearing. This changes RRS A5.*

### 1. RULES

- 1.1. The event is governed by the rules as defined in The Racing Rules of Sailing (RRS).
- 1.2. Appendix B Windsurfing Fleet Racing Rules will apply.
- 1.3. Appendix F Kiteboarding Racing Rules will apply.
- 1.4. Appendix T Arbitration will apply.
- 1.5. If there is a conflict between the NoR and the SIs, then the SIs shall prevail. This changes RRS 63.7.

### 2. CHANGES TO SAILING INSTRUCTIONS

The schedule of races will be posted by 2000 hrs on the day before it will take effect and any change to the SIs will be posted at least two (2) hours before the scheduled time of the first race of the day or before D Flag is displayed ashore, whichever is later.

### 3. COMMUNICATIONS WITH COMPETITORS

- 3.1. Notices to competitors (NTC) will be posted on the official noticeboard (ONB) at the Dinghy Clubhouse and online at: <https://fsc.com.au/sail-freo/>
- 3.2. The Race Office is located at the Dinghy Clubhouse.
- 3.3. On the water, the Race Committee intends to operate on the following VHF radio channel:

**CHARLIE COURSE**

77

### 4. CODE OF CONDUCT

[DP] Competitors and support persons shall comply with reasonable requests from race officials.



## 5. SIGNALS MADE ASHORE

- 5.1 Signals made ashore will be displayed at the flag mast on the western side of the Dinghy Clubhouse.
- 5.2 When flag AP is displayed ashore, '1 minute' is replaced with 'not less than 30 minutes' in Race Signals AP.
- 5.4 [DP][NP] A boat shall not leave the shore until flag D (with one sound signal) is displayed. The warning signal will be made not less than 30 minutes after flag D is displayed.
- 5.4 Charlie racing area will be identified by the following signal flag:

### Charlie Course



(Naval Numeral 3)

## 6. SCHEDULE

- 6.1. The schedule below is subject to wind forecasts enabling best racing conditions.

DATE	TIME	EVENT
Saturday 26 October	1030 – 1300	Race Session AM
	1300 – 1700	Race Session PM
Sunday 27 October	1030 – 1300	Race Session AM
	1300 – 1530	Race Session PM

- 6.2. RC will intend of notifying which time slot will be raced on the day prior. Only one session AM or PM will be utilised to achieve daily races.
- 6.3. No warning signal will be made after 1530 hrs on Sunday 27<sup>th</sup> October 2024.
- 6.4. To alert boards that a race or sequence of races will begin soon, the orange starting line flag will be displayed with one sound at least five minutes before a warning signal is made.
- 6.5. The schedule may be changed to sail more than the number of scheduled races per day, when behind schedule. However, no more than the maximum number of races per day will be sailed.

COURSE FORMAT	RACES PER DAY SCHEDULED	RACES PER DAY MAXIMUM
Windward Leeward	4	6
Slalom	8	10

## 7. CLASSES, SAILS AND CLASS FLAGS

- 7.1. The class flags as detailed below:

CLASSES	CODE FLAG	DESCRIPTION
Wind Foil Snr (9.0m <sup>2</sup> )		Code Flag J
Wind Foil Youth (8.0m <sup>2</sup> )		Code Flag T
Wind Foil Junior (≤7.0m <sup>2</sup> )		Code Flag K
Wing Foil		Code Flag W
Windsurfer LT		White insignia on blue background

7.2. Competitors in Wind Foil Junior shall fly a pink-coloured streamer attached to the tail-end of the boom or the clew of the sail. The streamer will be supplied by the OA.

## 8. RACING AREA

SI Amendment A shows the approximate locations of the racing areas.

## 9. COURSES

9.1. SI Addendum B shows the courses, including the approximate angles between legs, the order in which marks are to be passed, and the side on which each mark is to be left.

9.2. The course to be sailed will be designated on a course board from the Race Committee vessel no later than the warning signal by the following:

COURSE FORMAT	SIGNAL
Windward Leeward	W
Slalom with Starboard Start	SD3
Slalom with Port Start	PD3

## 10. RACE FORMAT

10.1. The intention is to sail two formats described below over the course of Sail Freo based on wind conditions and forecasts and it is at the discretion of the Race Committee. This is not grounds for redress. This changes RRS 62.1(a).

- a) Windward Leeward (W/L) Course racing (predominant format)
- b) Slalom racing (lighter winds)

10.2. The courses for the W/L and Slalom races will not be shortened. This changes RRS 32.

10.3. Legs of the course will not be changed after the Preparatory signal. This changes RRS 33.

## 11. MARKS

Marks are described in Addendum B Courses.

## 12. THE START

12.1. Races will be started in a 3-minute starting sequence as described below. This changes RRS 26.

MINUTES BEFORE STARTING SIGNAL	VISUAL SIGNAL	SOUND SIGNAL	MEANING
3	Class flag	One	Warning signal
2	P,U, Black flag	One	Preparatory signal
1	Prep removed	One long	One minute
0	Class flag removed	One	Starting signal



- 12.2. The starting line is between a staff displaying an orange flag on the Race Committee vessel at the starboard end and the course side of the port-end starting mark (Opposite for Slalom with Port start).
- 12.3. [SP][NP]Boards whose warning signal has not been made shall avoid the starting area during the starting sequence for other races.
- 12.4. [SP][NP] After starting in a race, a board shall not sail through the start line in either direction while racing.
- 12.5. A board that does not start within 3 minutes after their starting signal will be scored Did Not Start without a hearing. This changes RRS A5.1 and A5.2.
- 12.6. The starting signal for a class may be the warning signal for a subsequent class.
- 12.7. Classes may be started in any order and combined with other Classes.
- 12.8. The Race Committee may signal that boards shall start on a specific tack by displaying a green flag for starboard tack or red flag for port tack no later than the warning signal.

### 13. CHANGE OF THE NEXT LEG OF THE COURSE

Legs of the course will not be changed after the preparatory signal. This changes RRS 33.

### 14. THE FINISH

- 14.1 a) **W/L Course:** The finishing line is between a staff displaying a blue flag on the Race Committee vessel at the starboard end and the course side of the port end finishing mark.
- b) **Slalom Starboard Start:** The finishing line is between a staff displaying a blue flag on the Race Committee vessel at the port end and the course side of the starboard end finishing mark.
- c) **Slalom Port Start:** The finishing line is between a staff displaying a blue flag on the Race Committee vessel at the starboard end and the course side of the port end finishing mark.
- 14.2 [SP][NP] Except when finishing, boards shall not sail through the finishing line in either direction, while the Race Committee vessel is displaying a blue flag.

### 15. PENALTY SYSTEM

- 15.1 RRS 44.1 is changed so that the Two-Turns Penalty is replaced by a One-Turn Penalty.
- 15.2 For breaches of the SIs the Race Committee may apply a scoring penalty [SP] without a hearing. The SP for this series is 2 points for each breach. This changes RRS 63.1 and Appendix A5.1.

### 16. TIME LIMITS

- 16.1 Time limits are in minutes as follows:

COURSES	TIME LIMIT	FINISH WINDOW	TARGET TIME
Windward Leeward	30	10	10
Slalom	10	5	5

- 16.2 If no board sails the course and finishes within the Time Limit for the first board then the race will be abandoned.

16.3 Boards failing to finish within the time stated in the finish window after the first board sails the course and finishes will be scored Did Not Finish (DNF) without a hearing. This changes RRS 35, A4 and A5.

16.4 Failure to meet target times will not be grounds for redress. [NP]

## 17. HEARING REQUESTS

17.1 The protest time limit (PTL) is 60 minutes after the last board finishes the last race of the day or the Race Committee signals no more racing today, whichever is later. The PTL will be posted electronically inside the Dinghy Clubhouse.

17.2 Hearing request forms are available from the Race Office.

17.3 Notices will be posted no later than 30 minutes after the protest time limit to inform competitors of hearings in which they are parties or named as witnesses. Hearings will be held in the Protest Room, located at the Dinghy Clubhouse.

## 18. SCORING

Scoring shall be in accordance with the table below:

CHARLIE COURSE	
Races in series	16
Races to constitute a series	1
Discards after 4 races	1
Discards after 8 races	2
Discards after 12 races	3

## 19. SAFETY REGULATIONS [DP]

19.1 A board retires from a race shall notify the Race Committee at the first reasonable opportunity. Promptly after returning to shore, the board shall complete a Retirement Declaration form, which is available at the Race Office.

19.2 Competitors shall wear helmets that shall be to the minimum standard EN1385, EN1077, EN 966, ASTM 2040, Snell S98 or equivalent, with a brightly coloured region of at least 300 square centimetres of the exterior surface that can be seen from above the water with crew lying face down or face up.

19.3 Competitors shall at all times whilst afloat wear an impact vest or a personal flotation device that shall conform to the minimum standard ISO 12402-5 (level 50)

## 20. SIGN ON/OFF [SP][DP]

20.1. Boards shall sign-on before leaving the shore.

20.2. Boards shall sign-off upon returning to shore, before the protest time limit expires.

20.3. The Sign On/Off is available on PCs located at the Race Office and also online at:

<https://topyacht.com.au/tyow2/627>

20.4. In the event of a failure of the electronic Sign On/Off, a paper replacement will be available at the Race Office.

## 21. REPLACEMENT OF CREW OR EQUIPMENT

Substitution of damaged or lost equipment is not allowed unless authorised in writing to the Race Committee. Requests for substitution shall be made to the Committee at the first reasonable opportunity, which may be after the race via the link below:

<https://fsc.com.au/equipment-change-form/>

## 22. TRASH DISPOSAL

Trash may be placed onboard official vessels.

## 23. PRIZES

Refer NoR



(08) 9435 8800 Reception  
(08) 9435 8809 Boating Office



<https://fremantlesailingclub.com.au>  
[sailing@fsc.com.au](mailto:sailing@fsc.com.au)

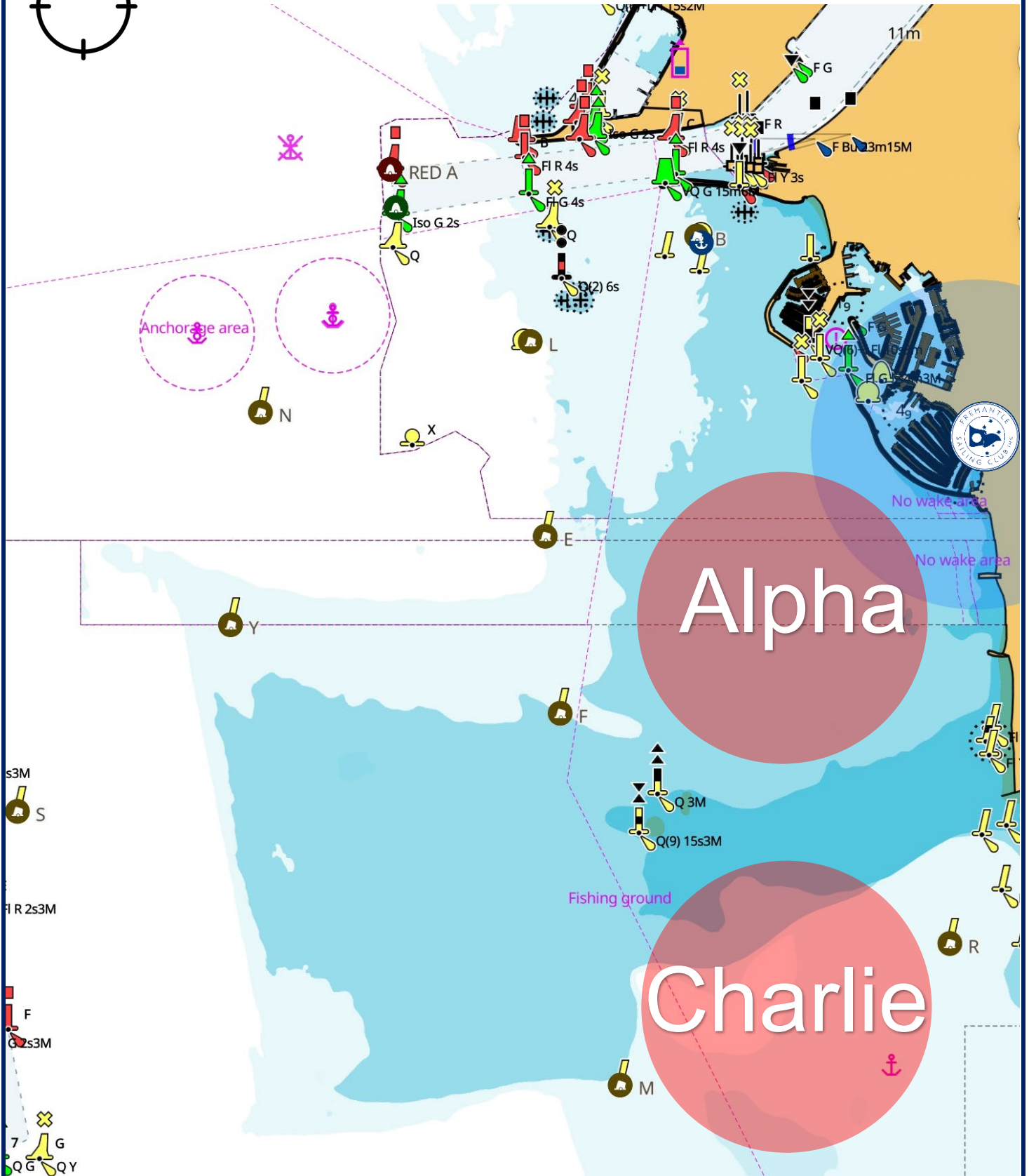
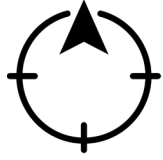


Fremantle WA 6160  
151 Marine Terrace



# SAIL FREGO

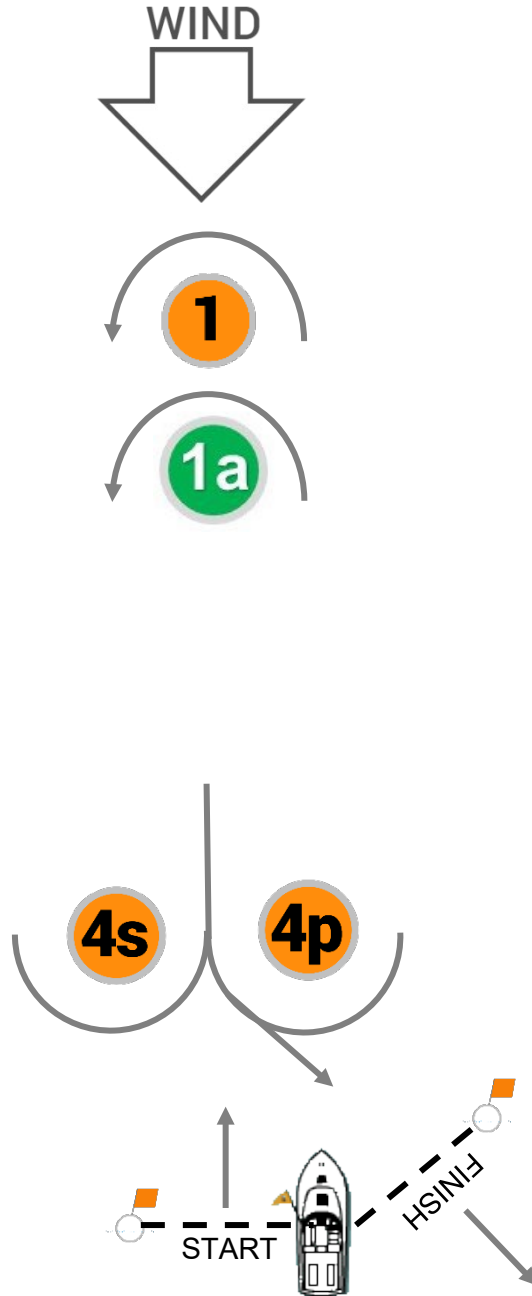
## Attachment A – Racing Areas



## ADDENDUM B – CHARLIE COURSE

<b>SIGNAL</b>	W
<b>WIND FOIL SNR / YTH, WING FOIL</b>	START – 1 – 4s/4p – 1 – 4p – FINISH
<b>WIND FOIL JNR / WINDSURFER LT</b>	START – 1a – 4s/4p – 1a – 4p – FINISH

### WINDWARD LEEWARD COURSE



MARKS	DESCRIPTION	CLASSES
	Orange pimple buoy	All Classes
	Green inflatable buoy	Wind Foil Jnr / Windsurfer LT



## ADDENDUM B – CHARLIE COURSE

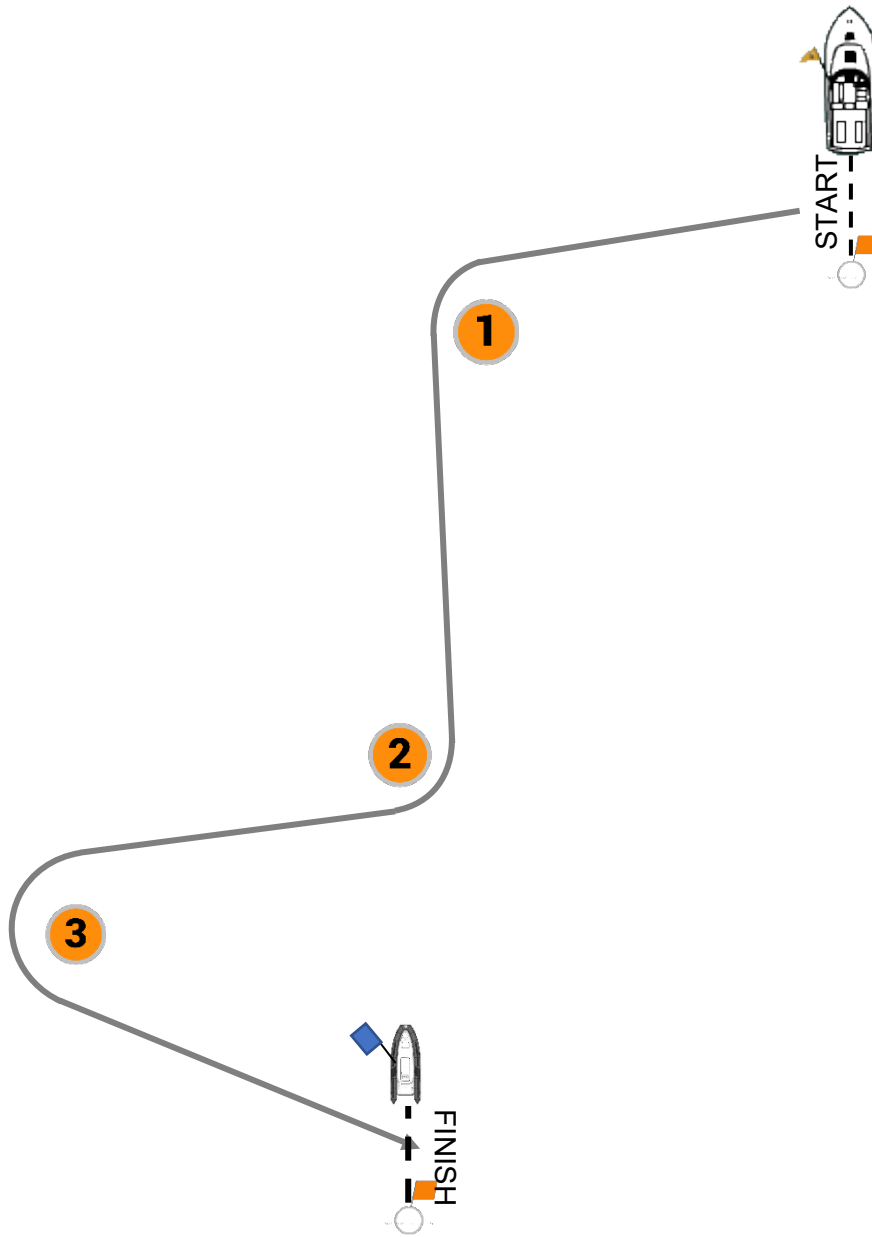
**SIGNAL**

SD3

**MARK ROUNDING ORDER**

START – 1 – 2 – 3 – FINISH

SLALOM COURSE  
STARBOARD START



**MARKS**

**DESCRIPTION**

**CLASSES**



Orange pimple buoy

All Classes

## ADDENDUM B – CHARLIE COURSE

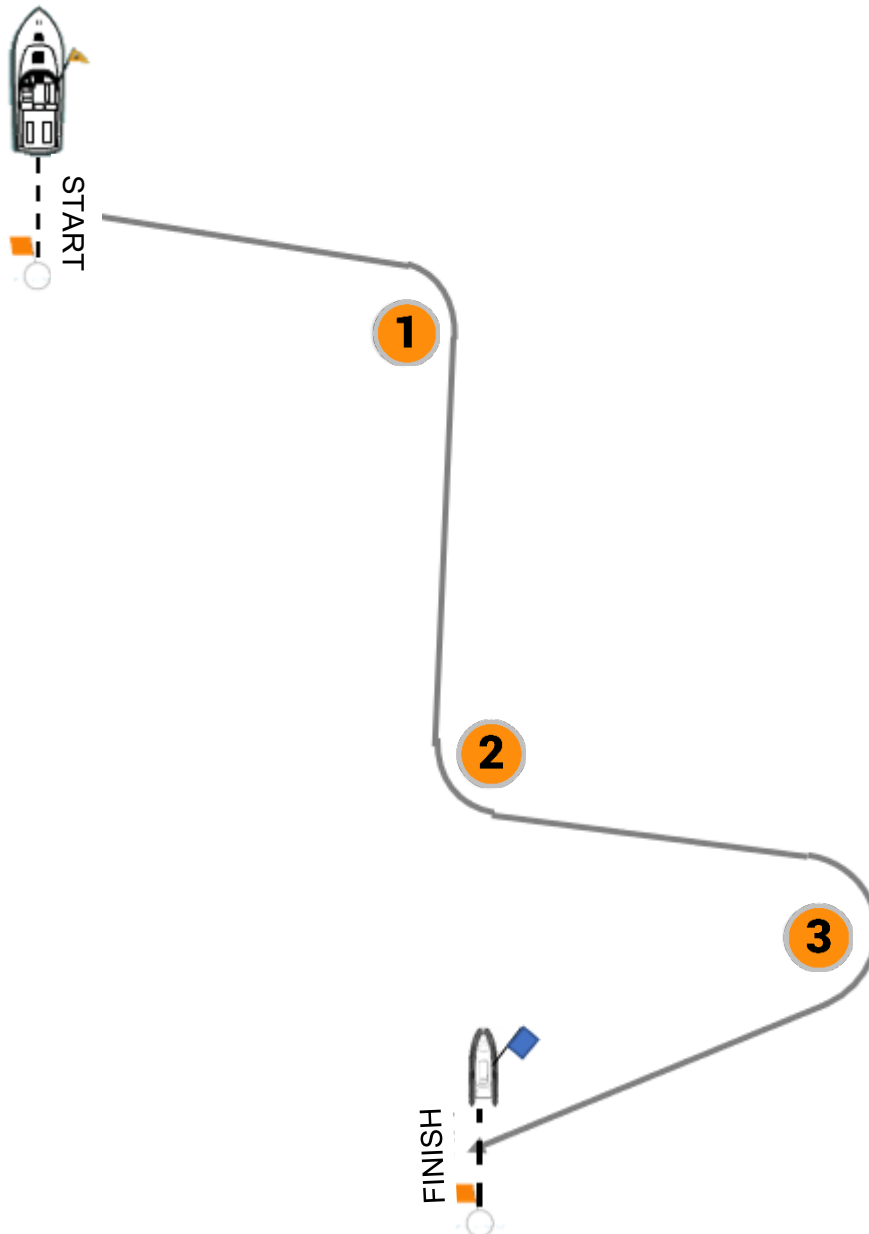
**SIGNAL**

PD3

**MARK ROUNDING ORDER**

START – 1 – 2 – 3 – FINISH

SLALOM COURSE  
PORT START



**MARKS**

**DESCRIPTION**

**CLASSES**



Orange pimple buoy

All Classes