

## SAILING INSTRUCTIONS (SIs)

The Organising Authority (OA) is Fremantle Sailing Club (FSC)

**26 & 27 October 2024**

Incorporating the Contender WA State Championships

## ALPHA COURSE

**AMENDED 25/10/24 NTC #2**

*The notation '[NP]' in a rule means that a boat may not protest another boat for breaking that rule. This changes RRS 60.1(a)*

*The notation '[SP]' denotes a rule for which a standard penalty may be applied by the race Committee without a hearing. This changes RRS A5.*

### 1. RULES

- 1.1. The event is governed by the rules as defined in The Racing Rules of Sailing (RRS).
- 1.2. Australian Sailing Special Regulations Part 2 for Off The Beach Boats will apply.
- 1.3. Appendix B Windsurfing Fleet Racing Rules will apply.
- 1.4. Appendix T Arbitration will apply.
- 1.5. If there is a conflict between the NoR and the SIs, then the SIs shall prevail. This changes RRS 63.7.

### 2. CHANGES TO SAILING INSTRUCTIONS

Any change to the SIs will be posted at least two (2) hours before the scheduled time of the first race of the day it will take effect, except that any change to the schedule of races will be posted by 1800 on the day before it will take effect.

### 3. COMMUNICATION WITH COMPETITORS

- 3.1. Notices to competitors (NTC) will be posted on the official noticeboard (ONB) located at the Dinghy Clubhouse and online at: <https://fsc.com.au/sail-freo/>
- 3.2. The Race Office is located at the Dinghy Clubhouse.
- 3.3. On the water, the Race Committee intends to operate on the following VHF channels:

ALPHA COURSE

74

### 4. CODE OF CONDUCT

[DP] Competitors and support persons shall comply with reasonable requests from race officials.



## 5. SIGNALS MADE ASHORE

- 5.1. Signals made ashore will be displayed at the flag mast on the western side of the Dinghy Clubhouse.
- 5.2. When flag AP is displayed ashore, '1 minute' is replaced with 'not less than 30 minutes' in the Race Signals AP.
- 5.3. [DP][NP] A boat shall not leave the shore until flag D (with one sound signal) is displayed. The warning signal will be made not less than 30 minutes after flag D is displayed.
- 5.4. Alpha Course racing area will be identified by the following flag:



**Alpha Course**  
(Naval Numeral 1)

## 6. SCHEDULE

- 6.1. The schedule is as follows:

DATE	TIME	EVENT
Monday, 14 October	1600	Closing of Entries
Friday, 25 October	1600 - 1800	Registration / Regatta Office
Saturday, 26 October	0830 - 0930	Registration / Regatta Office
	0830	Volunteers / Coaches Briefing
	0900	Competitors Briefing
	1030	1 <sup>st</sup> Warning signal
	After racing	Sail Freo Sundowner at Dinghy Clubhouse
		Includes Huck Scott 2024 Presentation
Sunday, 27 October	0830	Volunteers / Coaches Briefing
	0900	Competitors Briefing
	1030	1 <sup>st</sup> Warning Signal
	1530	No warning signal after 1530
	After racing	Presentation of prizes at main clubhouse

- 6.2. A maximum of four (4) races may be completed on any race day.
- 6.3. No warning signal will be made after 1530 hrs on Sunday 27<sup>th</sup> October 2024.
- 6.4. To alert boats that a race or sequence of races will begin soon, the orange starting line flag will be displayed with one sound at least five minutes before a warning signal is made.



## 7. CLASS FLAGS

7.1. Class flags as detailed below:

CLASSES	CLASS FLAGS	CLASSES	CLASS FLAGS
Optimist Open		OK Dinghy	
Optimist Intermediate		Contender	
Open Skiff Open		Windsurfer LT	
Open Skiff Intermediate		29er	
ILCA 4		505	
ILCA 6		SB20	
ILCA 7			

7.2. Competitors in the Optimist and Open Skiff Intermediate fleets shall fly a pink-coloured streamer attached to the top of their sprit or mast. The streamer will be supplied by the OA.

## 8. RACING AREA

8.1. SI Attachment A shows the approximate locations of racing areas.

## 9. COURSES

9.1. SI Attachment B shows the courses, including the approximate angles between legs, the order in which marks are to be passed, and the side on which each mark is to be left.

9.2. If only one gate mark is present, boats shall round the single mark to port.

9.3. The course to be sailed will be designated by the following:

### ALPHA COURSE

Course Board

## 10. MARKS

ALPHA COURSE	
1	Green inflatable buoy
1a	Yellow inflatable buoy
1b	Red inflatable buoy
2	Yellow inflatable buoy
3	Yellow inflatable buoy
4s/4p	Orange pimple buoys
5	Yellow/Red inflatable buoy



## 11. THE START

- 11.1. Races will be started in a 3-minute starting sequence as described below. This changes RRS 26.

MINUTES BEFORE STARTING SIGNAL	VISUAL SIGNAL	SOUND SIGNAL	MEANING
3	Class flag	One	Warning signal
2	P,U, Black flag	One	Preparatory signal
1	Prep removed	One long	One minute
0	Class flag removed	One	Starting signal

- 11.2. The starting line is between a staff displaying an orange flag on the Race Committee vessel at the starboard end and the course side of the port-end starting mark.
- 11.3. [SP][NP] Boats whose warning signal has not been made shall avoid the starting area during the starting sequence for other races.
- 11.4. [SP][NP] After starting a race, a boat shall not sail through the start line in either direction while racing.
- 11.5. A boat that does not start within 3 minutes after her starting signal will be scored Did Not Start without a hearing. This changes RRS A5.1 and A5.2.
- 11.6. The starting signal for a class may be the warning signal for a subsequent class.
- 11.7. Classes may be started in any order and combined with other Classes.

## 12. CHANGE OF THE NEXT LEG OF THE COURSE

To change the next leg of the course, the Race Committee will move the original mark (or move the finishing line) to a new position.

## 13. THE FINISH

- 13.1 The finishing line is between a staff displaying a blue flag on the Race Committee vessel at the starboard end and the course side of the port end finishing mark.
- 13.3 [SP][NP] Except when finishing, boats sailing through the finishing line in either direction, while Race Committee vessel is displaying a blue flag will incur a scoring penalty [SP] without a hearing.

## 14. PENALTY SYSTEM

- 14.1 RRS 44.1 is changed so that the Two-Turns Penalty is replaced by a One-Turn Penalty.
- 14.2 For breaches of the SIs the Race Committee may apply a standard penalty [SP] without a hearing. The SP for this regatta is 2 points for each breach.
- 14.3 Appendix T Arbitration will apply.
- 14.4 Appendix P5.1 applies if the Class Rules permit pumping, rocking and ooching when the wind speed exceeds a specified limit.

## 15. TIME LIMITS

Boats failing to finish within 15 minutes after the first boat finishes will be scored 'Did Not Finish'. This changes RRS 35 & A5.



## 16. HEARING REQUESTS

- 16.1 The protest time limit (PTL) is 60 minutes after the last boat finishes the last race of the day or the Race Committee signals no more racing today, whichever is later. The PTL will be posted electronically inside the Dinghy Clubhouse.
- 16.2 Hearing Request forms are available from the Race Office.
- 16.3 Notices will be posted no later than 30 minutes after the protest time limit to inform competitors of hearings in which they are parties or named as witnesses. Hearings will be held in the Protest Room, located at the Dinghy Clubhouse.

## 17. SCORING

Scoring shall be in accordance with the tables below:

ALPHA COURSE	
Races in series	7
Races to constitute a series	1
Discards after 6 races	1

## 18. SAFETY REGULATIONS

A boat that retires from a race shall notify the Race Committee at the first reasonable opportunity. Promptly after returning to shore, the boat shall complete a retirement declaration form, which is available at the Race Office.

## 19. SIGN ON/OFF

- 19.1 [SP] Boats shall sign on before leaving the shore.
- 19.2 [SP] Boats shall sign off upon returning to shore.
- 19.3 The Sign On/Off is available on PCs located at the Race Office and also online at:

<https://topyacht.com.au/tyow2/627>

- 19.4 In the event of a failure of the electronic Sign On/Off, a paper replacement will be available at the Race Office.

## 20. REPLACEMENT OF CREW OR EQUIPMENT

Substitution of damaged or lost equipment is not allowed unless authorised in writing to the Race Committee. Requests for substitution shall be made to the Race Committee at the first reasonable opportunity, which may be after the race via the link below:

<https://fsc.com.au/equipment-change-form/>

## 21. TRASH DISPOSAL

Trash may be placed aboard official vessels.

## 22. PRIZES

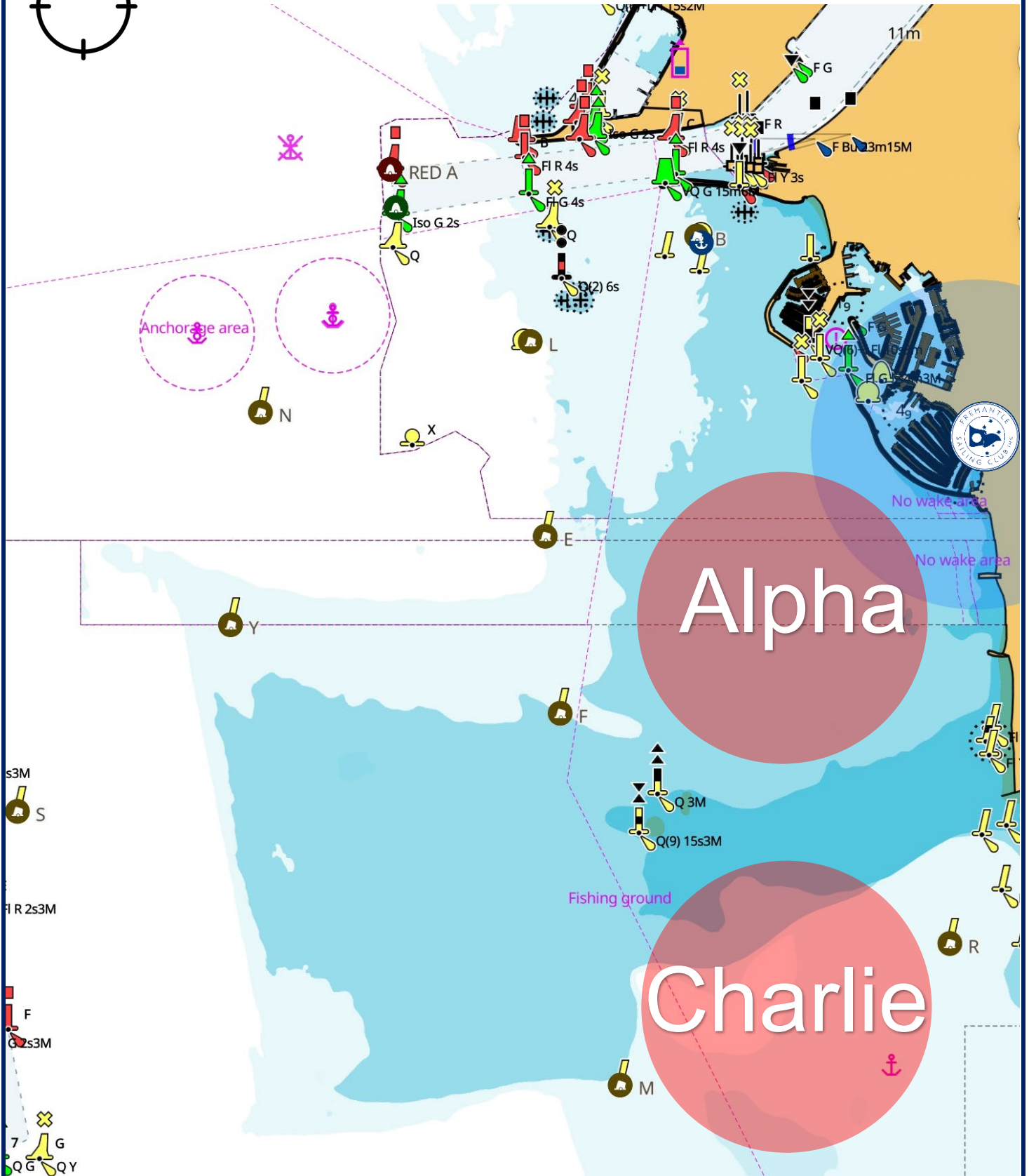
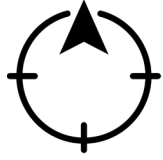
Refer NoR





# SAIL FREGO

## Attachment A – Racing Areas



# SAIL FREGO

## Attachment B – Courses

### ALPHA COURSE

CLASS	SIGNAL	MARK ROUNDING ORDER
Optimist Intermediate, Open Skiff Intermediate	0 1	START – 1 – 2 – 3 – 5 – FINISH
Optimist Intermediate, Open Skiff Intermediate	0 2	START – 1 – 2 – 3 – 5 – FINISH
Optimist Open, Open Skiff Open	0 1	START – 1 – 2 – 3 – 5 – FINISH
Optimist Open, Open Skiff Open, <i>Windsurfer-LT</i>	0 2	START – 1 – 2 – 3 – 2 – 3 – 5 – FINISH
ILCA, OK Dinghy, <i>Contender, SB20</i>	1 2	START – 1a – 4s/4p – 1a – 2 – 3 – 5 – FINISH
ILCA, OK Dinghy <i>Contender, SB20</i>	1 3	START – 1a – 4s/4p – 1a – 4s/4p – 1a – 2 – 3 – 5 – FINISH
29er, 505	1 2	<i>START – 1b – 4s/4p – 1b – 5 – FINISH</i>
29er, 505	1 3	<i>START – 1b – 4s/4p – 1b – 4s/4p – 1b – 5 – FINISH</i>

#### TRAPEZOID COURSE

