

AUSTRALIA DAY

TROPHY RACE



**SAILING
INSTRUCTIONS**
SAT 25 JANUARY 2025



The Organising Authority (OA) is Fremantle Sailing Club (FSC).

The notation '[NP]' in a rule means that a boat may not protest another boat for breaking that rule. This changes RRS 60.1(a).

1. RULES

- 1.1. The event is governed by the rules as defined in The Racing Rules of Sailing (RRS).
- 1.2. Boats shall comply with ASSR Part 1, Category 5 and with DoT safety requirements which include a GPS enabled 406 MHz EPIRB, 2 Handheld red flares and 2 handheld orange flares or an Electronic Visual Distress Signal (EVDS) and minimum level 100 lifejackets. Where there is an item that is required by both ASSR Part 1 and DoT, the higher standard shall apply.
- 1.3. RRS 40.1 applies. Boats without lifelines (see ASSR Part 1 5.01.1 (j)) and competitors sailing doublehanded shall wear a PFD at all times whilst afloat.
- 1.4. The FSC Performance Handicapping (PHF) rules apply.
- 1.5. Appendix T Arbitration will apply.
- 1.6. Boats with moveable or variable ballast (as defined in the ASSR Part 1) may move or vary their ballast whilst racing. This changes RRS 51.
- 1.7. The use of self-steering equipment is permitted for boats sailing doublehanded. This changes RRS 52.
- 1.8. If there is a conflict between the NoR and the SIs, the SIs shall prevail. This changes RRS 63.5.
- 1.9. **Sails:**
Boats competing in Jib and Main divisions shall sail with a main and headsails only. A headsail is defined as a sail with the entire luff of the sail attached along a headstay. Boats shall not carry spinnakers or Code Zero sails. One Headsail may be poled out with a whisker pole. A whisker pole shall be used in accordance with RRS 55.2.

2. CHANGES TO SAILING INSTRUCTIONS

- 2.1. Any change to these SIs will be posted not less than 90 minutes before the first race of the day. Any change to the Schedule of Races will be posted by 1800 on the day before it will take effect.
- 2.2. Changes to an SI may be made on the water by displaying Code Flag 'L' from the Race Committee Vessel. The change may be communicated either orally or in writing.

3. COMMUNICATIONS WITH COMPETITORS

- 3.1. Notices to Competitors (NTCs) will be posted on the ONB at: <https://fsc.com.au/onb/>
- 3.2. On the water, the Race Committee intends to monitor and communicate with competitors on VHF channel 72 and 16.
- 3.3. [DP] While racing, except in an emergency, a boat shall not make voice or data transmissions and shall not receive voice or data communication that is not available to all boats.

4. CODE OF CONDUCT

[DP] Competitors and support persons shall comply with reasonable requests from race officials.

5. SIGNALS MADE ASHORE

- 5.1. Signals made ashore will be displayed from the main flag mast located on the VIP lawn at FSC.
- 5.2. When flag 'AP' is displayed ashore. '1 minute is replaced with 'not less than 45 minutes' in Race Signals AP.



6. SCHEDULE OF RACE

6.1. The schedule of race is as follows:

DAY	DATE	1 ST WARNING	FLEET
Saturday	25 January 2025	1015	Divisions 1, 2 & 6 J&M
		After racing	Presentation of results

6.2. To alert boats that a race or sequence of races will begin soon, an orange flag will be displayed with one sound at least five minutes before a warning signal is made.

7. CLASS FLAGS

7.1. The Class flag is the Combined Divisions white flag.

7.2. All Divisions shall start together.

7.3. Boats shall display their assigned class flag as shown below:

FLEET	CLASS FLAG
Division 1	Naval Numeral 1 
Division 2	Naval Numeral 2 
Division 6 J&M	Naval Numeral 6 

7.4. Class flags shall be displayed from the backstay or mainsail leach while racing and shall be removed when no longer racing.

8. RACING AREA

Refer SI Addendum A.

9. COURSES

9.1. Refer SI Addendum B.

9.2. No course flag will be flown.

10. MARKS

10.1. Refer to NoR Addendum F for mark locations and descriptions.

10.2. If a mark is missing or out of position while boats are racing, the Race Committee shall, if possible, substitute with a replacement mark displaying Code Flag 'M' and advise by VHF radio.

10.3. If a mark is missing and Code Flag 'M' is not in position, boats shall round/pass in the mark's usual position. This changes RRS 34. The Race Committee may require evidence of the rounding/passing.

11. OBSTRUCTIONS

The following area is designated an obstruction.

Fremantle Harbour Entrance

While racing, boats shall not enter an area bounded by a line joining the following marks:

MARKS	LATITUDE	LONGITUDE
Harbour Entrance Buoy Green No. 1	32° 3.443'S	115° 43.044'E
Harbour Entrance Buoy Red A	32° 3.316'S	115° 43.025'E
Harbour Entrance Beacon Red C	32° 3.227'S	115° 43.969'E
Harbour Entrance Beacon Green No. 3	32° 3.327'S	115° 43.985'E



12. THE START

- 12.1. The starting line will be between a mast displaying an orange flag on the Race Committee vessel and the course side of Mark L.
- 12.2. A crowding mark may be laid adjacent to the Race Committee vessel. When laid, boats shall not sail between the crowding mark and the Race Committee vessel.
- 12.3. [SP][NP]Boats whose warning signal has not been made shall avoid the starting area during the starting sequence for other races.
- 12.4. A boat that does not start within 20 minutes after her starting signal will be scored Did Not Start (DNS) without a hearing. This changes RRS A5.1 and A5.2.
- 12.5. When a General Recall is signaled, the warning signal for a new start for the first recalled fleet will be made at the starting of the last fleet in the original sequence. New starts for other recalled fleets will follow in order thereafter. A General Recall signal will be displayed for one minute. This changes RRS 29.2 and race signal, 'First Substitute'.

13. SHORTENING COURSE

RRS 32.2(a) applies.

14. THE FINISH

The finishing line is between a mast displaying a blue flag on the Race Committee vessel and the course side of Mark L.

15. PENALTY SYSTEM

- 15.1. For all boats, RRS 44.1 is changed so that the Two-Turns Penalty is replaced by the One-Turn Penalty.
- 15.2. Scoring Penalty – for some specific breaches of the rules, the Race Committee may apply a scoring penalty [SP] without a hearing. The Race Committee may still protest a boat when they consider the SP inappropriate. The scoring penalty is 2 points. This changes RRS Appendix A5.

16. TIME LIMIT

- 16.1. The race time limit is 1230.
- 16.2. Boats not finished by the time limit shall be scored DNF. This changes RRS 35, A3.

17. HEARING REQUESTS

- 17.1. The protest time limit is 60 minutes after the last boat finishes the last race of the day or the Race Committee signals no more racing today, whichever is later.
- 17.2. Hearing request forms are available from the Boating Office.
- 17.3. Notices will be posted no later than 30 minutes after the protest time limit to inform competitors of hearings in which they are parties or named as witnesses. Hearings will be held in the Activities Room unless advised otherwise.

18. SAFETY REGULATIONS[SP][NP]

- 18.1. All boats shall comply with the following requirements:
 - a) Log on to Fremantle Race Control using VHF 72 between the period 1 hour before the first warning signal and no later than the first warning signal of the day.
 - b) Maintain a constant listening watch on VHF 72 and VHF 16.
 - c) Boats retiring prior to starting or during a race shall notify Fremantle Race Control by VHF 72 or by phone (0478 637 135) before leaving the race area.
 - d) A boat shall have a minimum of two crew inclusive of the helmsperson and each capable of sailing the boat.



19. EQUIPMENT CHECKS

A boat or equipment may be inspected at any time for compliance with the NoR and these Sls.

20. FURTHER INFORMATION

Scott Nunn

Boating Office,

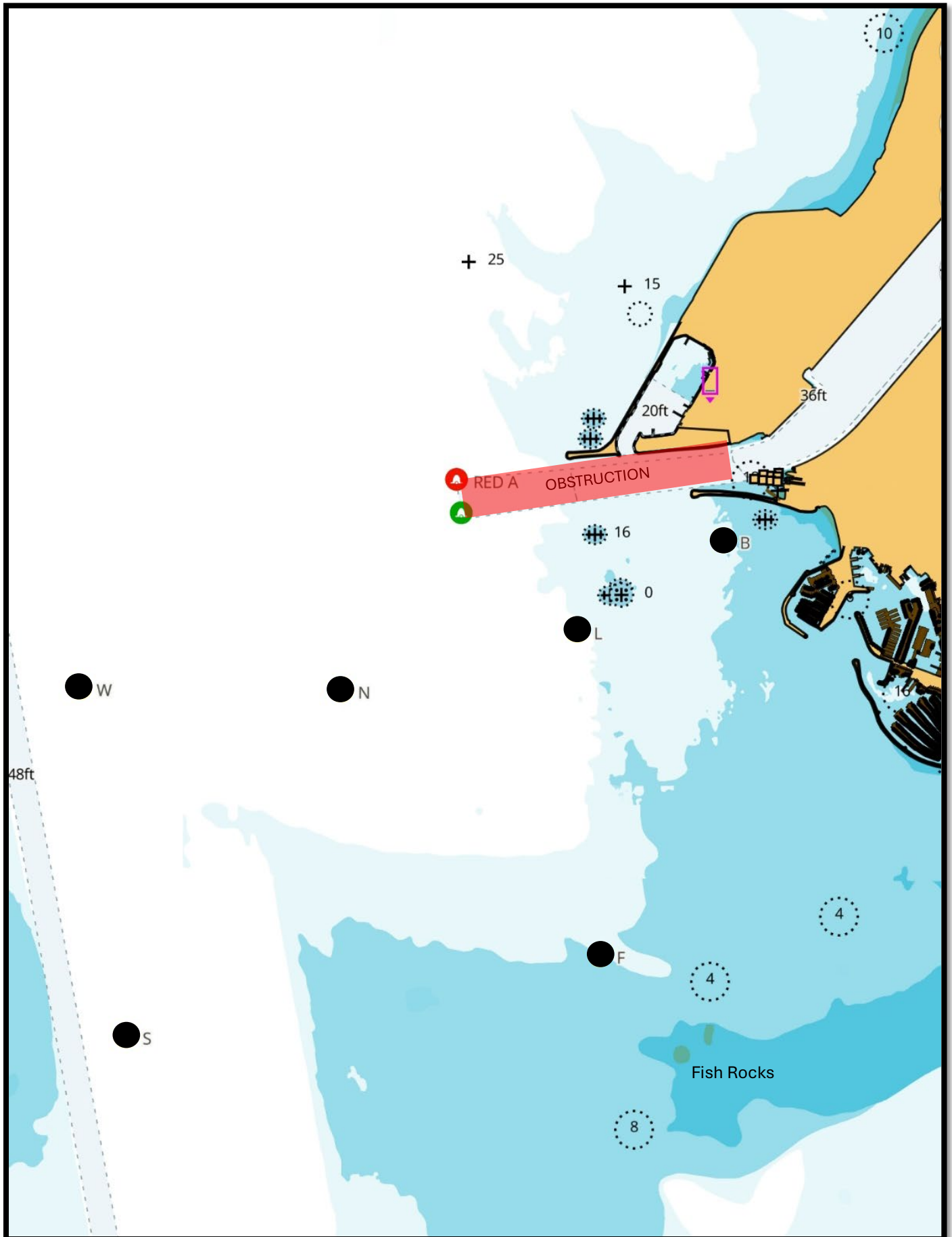
Fremantle Sailing Club

Phone: 08 9435 8821 / 0478 073 452

Email: sailingadmin@fsc.com.au

Race Control: 0478 637 135





This diagram is a guide only and not to be used for navigation.



DIVISION 1	Approx. 8.7 Nm
MARKS	LEAVE TO
Start at Mark L	
Mark S	<i>Starboard</i>
Mark W	<i>Starboard</i>
Mark B	<i>Starboard</i>
Mark F	<i>Starboard</i>
Mark N	<i>Starboard</i>
Finish at Mark L	

DIVISION 6 J&M	Approx. 6.5 Nm
MARKS	LEAVE TO
Start at Mark L	
Mark S	<i>Starboard</i>
Mark N	<i>Starboard</i>
Mark F	<i>Starboard</i>
Mark N	<i>Starboard</i>
Finish at Mark L	

DIVISION 2	Approx. 7.1 Nm
MARKS	LEAVE TO
Start at Mark L	
Mark S	<i>Starboard</i>
Mark W	<i>Starboard</i>
Mark N	<i>Starboard</i>
Mark F	<i>Starboard</i>
Mark N	<i>Starboard</i>
Finish at Mark L	

